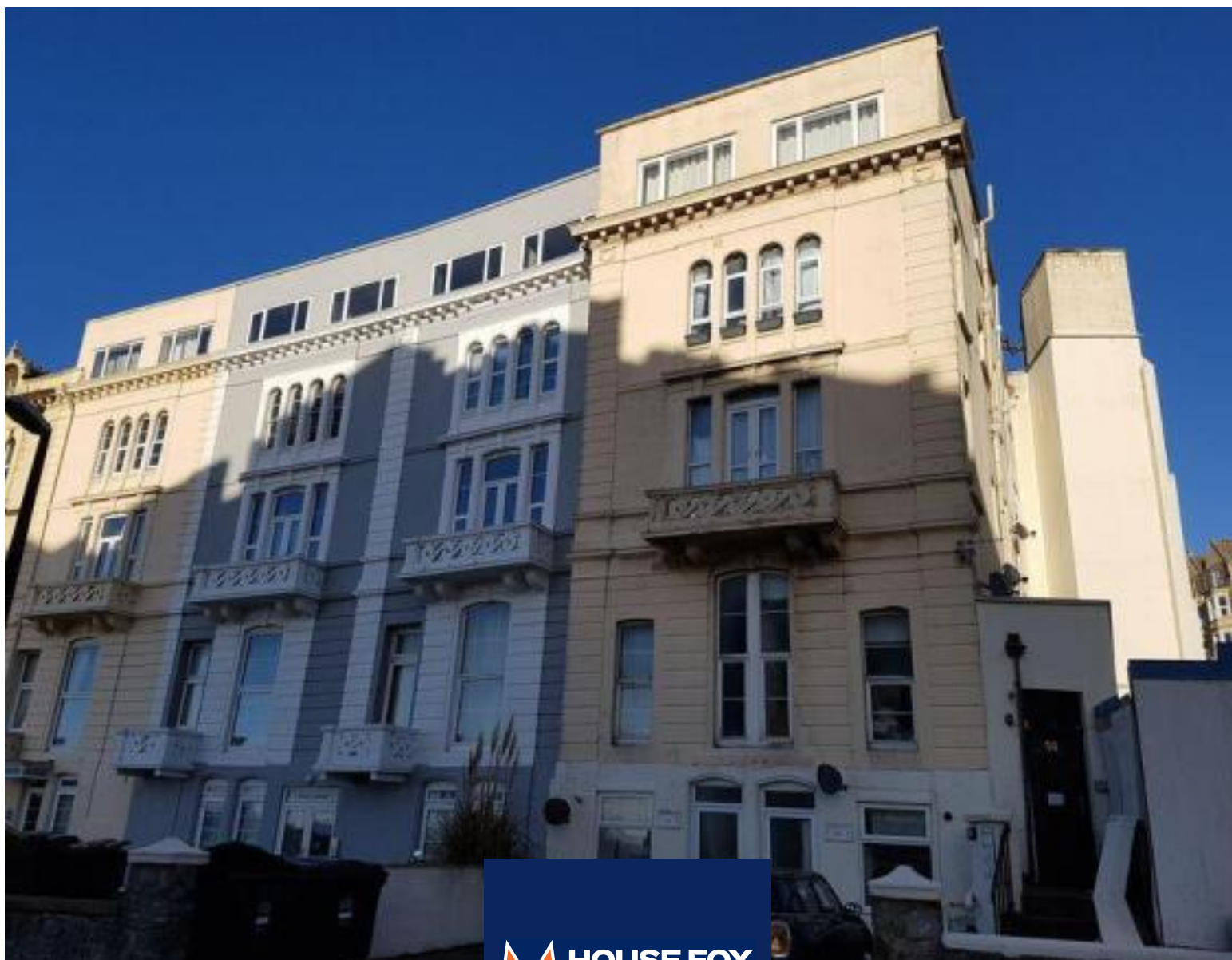


**Badminton, Manilla Crescent, Weston-Super-Mare, Somerset.
BS23 2BP**

**Offers in Region of £130,000 Leasehold
FOR SALE**



www.housefox.co.uk

01934 314242
01275 404601
01278 557700
sales@housefox.co.uk

PROPERTY DESCRIPTION

HOUSE FOX ESTATE AGENTS PRESENTS.....What a great location, you are literally a 2 minute walk to the beach, promenade and the bars, cafes, restaurants and sea front.

The ground floor apartment is offered for sale in good condition and with no onward chain. Being offered for sale at offers in the region of £130,000 this flat offers a great purchase for a first time buyer, investor or someone wanting a holiday home.

The flat comprises hallway, lounge/kitchen, 2 bedrooms, bathroom, modern electric heating and double glazing.

So if you want to be able to step outside your front door and be on the beach for those early morning strolls or have a late night walk to watch the sunset, then book a viewing with House Fox today

FEATURES

- WALK THROUGH 360 VIDEO TOUR AVAILABLE
- Ground floor flat
- 2 bedrooms
- Well presented
- Modern electric heaters
- 2 minute walk to the sea front
- UPVC double glazing
- No onward chain
- 17ft Living room/kitchen
- EPC-E



ROOM DESCRIPTIONS

Communal front door to the communal hallway.

Communal hallway:

Door to the flat

Hallway:

Doors to all rooms

Living room/kitchen:

5.18m x 3.72m (17' 0" x 12' 2") Electric heater, sink unit, floor and wall units, water heater control, built in oven, hob and extractor hood

Bedroom 1:

4.57m x 3.13m (15' 0" x 10' 3") Electric heater, double glazed window

Bedroom 2:

3.40m x 2.25m (11' 2" x 7' 5") Electric heater, double glazed window

Bathroom:

Shower cubicle, wash hand basin, WC, heated towel rail, double glazed window

Parking:

Within a 2 minute walk is a car park, and you are able to purchase a parking permit, for around £500 a year



FLOORPLAN & EPC

