



**29 Green Farm Road, Newport Pagnell,  
Buckinghamshire, MK16 0JY**

**£240,000**

- GARDEN
- Two Bedroom & Two Bathroom
- Desirable Area
- £250 a year ground rent
- £180.50 pm service charge
- 125 year lease from 2010
- Fully refurbished
- Walking distance to Newport Pagnell Town
- EPC Rating







### \*\*\*TWO BEDROOM APARTMENT WITH A GARDEN\*\*

Fantastic two bedroom, ground floor apartment with a large garden.

The apartment is in great condition throughout , offering two bedrooms and two bathrooms.

Off the entrance hall is bedrooms one and two,followed by the main bathroom , two generous storage cupboards and the spacious open plan living space with integrated appliances to include a fridge freezer, washing machine and gas hob with an oven. There are french doors to the garden allowing for lots of natural light.

There is allocated parking as well as visitor bays. Situated in the highly desirable area of Newport Pagnell you are a short drive into the main town and only 15 minutes into Central Milton Keynes. Walking distance to Bury field and local amenities.

£250 Ground rent yearly

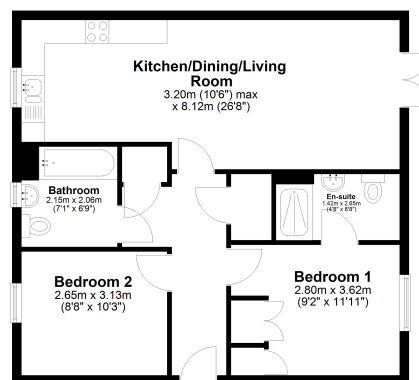
£180.50 per month service charge

125 year lease from 2010

### Disclaimer

Whilst we have endeavoured to prepare our sales particulars accurately none of the services, appliances or equipment have been tested. A buyer should satisfy themselves on such matters prior to purchase. Any measurements or distances mentioned in these particulars are for guide reference only. If such particulars are fundamental to a purchase, buyers should rely on their own enquiries. All enquiries should be directed to Elevation Estate Agents in the first instance

**Ground Floor**  
Approx. 61.8 sq. metres (665.0 sq. feet)



Total area: approx. 61.8 sq. metres (665.0 sq. feet)