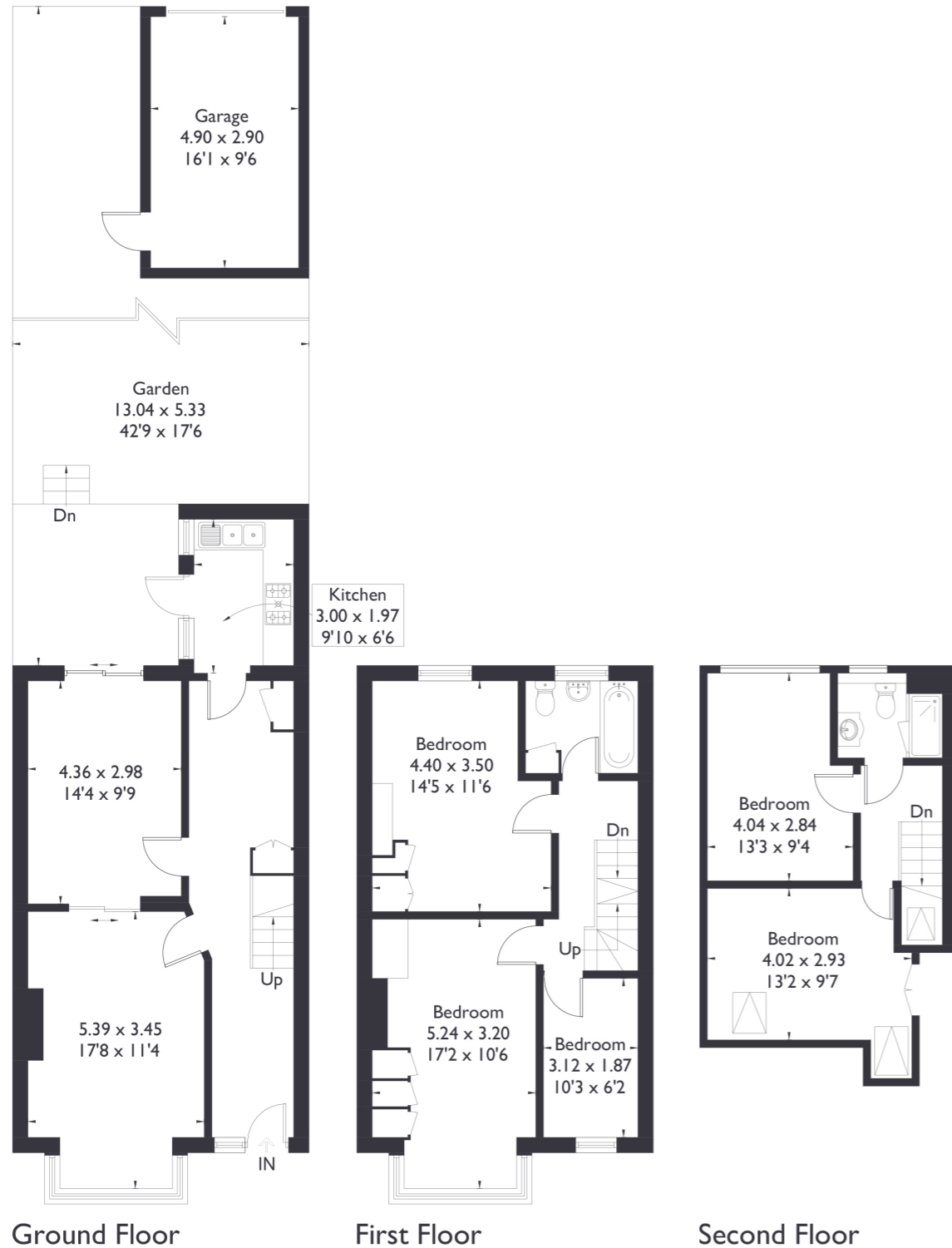


Leyborne Avenue, W13

Approximate Floor Area = 135.8 sq m / 1462 sq ft
Garage = 14.2 sq m / 153 sq ft
Total = 150 sq m / 1615 sq ft



5 BEDROOM HOUSE

Leyborne Avenue, W13

£1,100,000

Welcome to this five bedroom, two bathroom period property in the heart of Northfields. Lovingly maintained by the current owners over the years, this home offers generously sized rooms throughout. Upon entering, you'll find a spacious reception room and dining area, which flows seamlessly into a south facing garden.

FEATURES

- Five Bedrooms
- Two Bathrooms
- Separate Kitchen & Dining
- Northfields Avenue Amenities
- Northfields Station
- Fielding Primary Catchment
- EPC Rating E



5 BEDROOM HOUSE

Leyborne Ave, W13

To the right, there is a well appointed, separate kitchen. Upstairs, there are four large bedrooms and a cosy single room, all filled with natural light.

The home's ideal location is close to Northfields' vibrant amenities and Northfields Station, and it is within the catchment area for the highly regarded Fielding Primary School. This home is in a sought after neighbourhood, blending comfort, space, and convenience. EPC Rating E.

