

# GREAT EASTERN STREET

LONDON EC2A 3QR



THE PROPERTY BROKERS

To Let

- 2 bed 2 bath
- 1,200 sqft (approx.)
- Exposed brickwork
- Vaulted ceiling
- Furnished

Original loft apartment on the top floor of a classic Victorian Warehouse in the very centre of Shoreditch on Great Eastern Street.

Featuring all of the authentic trimmings of a 90's conversion including exposed brickwork, timber beams, wood flooring and a stunning vaulted ceiling, this circa 1,200 sqft, 2 bedroom space offers true loft living. Located up on the third (top) floor the main open plan living space directly over looks Great Eastern Street nearby Glorias & the nearby Hoxton Hotel providing great views of the city scape via double glazed windows. To one side, a fully fitted open plan kitchen with stainless steel appliances makes for practical use and is well configured for the budding chef – gas





# GREAT EASTERN STREET

LONDON EC2A 3QR



THE PROPERTY BROKERS

cooking is a plus.

A central timber staircase leads up onto a mezzanine level in the vaulted ceiling where the first double bedroom and bathroom is located complete with plenty of built in storage. The master bedroom is set to rear of the apartment which has an en-suite shower room plus walk-in wardrobe area.

Transport connections are simple and convenient with Old Street station a 4 minute walk away and Liverpool Street around 9 minutes down Curtain Road.

Available 11th of July 2022 and offered part furnished.

\*Furniture included in the rental: King bed, 2x bedside tables & lamps, chesterfield sofa, dining table, bench & 2 chairs, coffee





# GREAT EASTERN STREET

LONDON EC2A 3QR

table, 2 ceiling lamps, 2 large rugs



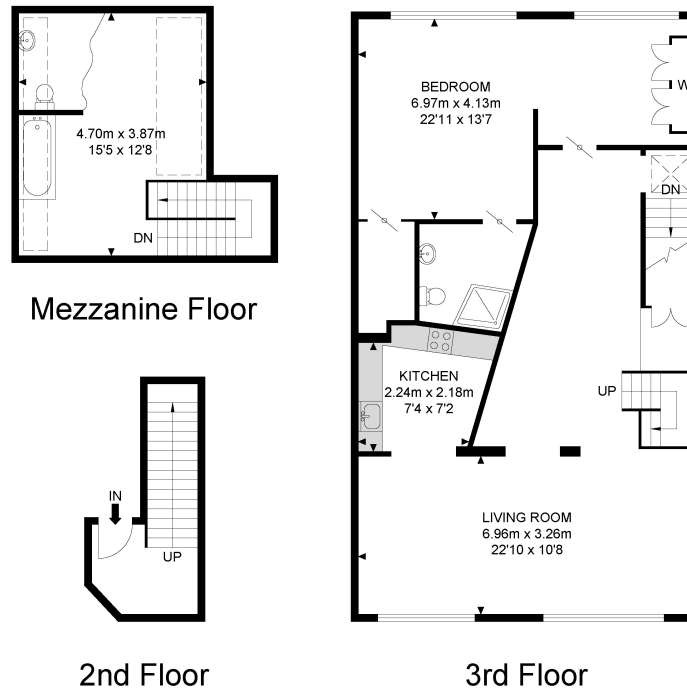
# GREAT EASTERN STREET

LONDON EC2A 3QR





## Great Eastern Street



APPROX. GROSS INTERNAL FLOOR AREA 1154.96 SQ FT / 107.30 SQM  
RESTRICTED HEIGHT AREA 69.96 SQ FT / 6.50 SQM

Whilst every attempt has been made to ensure the accuracy of the floor plan contained here, measurements of doors, windows, rooms and any other items are approximated and no responsibility is taken for any error, omission or mis-statement. This plan is for illustrative purposes only and should be used as such by any prospective purchaser. The service, system and appliances shown have not been tested and no guarantee as to their operability or efficiency can be given.

© SpacePhoto

Photography and Floor Plan



SALES  
LETTINGS  
OFF MARKET  
ACQUISITIONS  
DEVELOPMENT  
COMMERCIAL  
VALUATIONS

**TOBIAS ALLAN**

*Director*

07970 963 478

**JAMES DANTON**

*Director*

07930 858 612

**ADAM JONES**

*Director*

07769 275 027

