



BRITISH
PROPERTY
AWARDS

2017 - 2019

★★★★★

GOLD WINNER

ESTATE AGENT
IN GL17-20

Tewkesbury

01684 293246

**Engall
Castle**

.com

2 Penny Black Cottages, Post Office Lane, Tewkesbury, GL20 5AD

Discreetly located off the High Street, Penny Black Cottages form part of a Grade II Listing building and are accessed via a private doorway into a walled courtyard – which offers great space for seating, pots and bin storage.

This mews cottage has been cleverly converted and comprises on the ground floor of an open plan living room, with attractive beams and which opens into the kitchen.

The kitchen is fitted with a range of wall and base units with integrated single oven, electric hob and extractor over. There is space and plumbing for a washing machine, fridge and freezer.

Stairs lead from the lounge to two bedrooms and a bathroom. The main bedroom has a staircase leading to usable attic space ideal as wardrobe space.



The modern bathroom has a panel bath with an electric shower over, wall hung wash basin and low level wc.

The property benefits from electric night storage heating.

Tucked away in the heart of the town centre and its wealth of shops, eateries, leisure facilities, The Roses Theatre, a newly built hospital and medical centre, and indeed a local convenience store within 2 minutes of your door, it is a perfect location within the town.

Centrally situated between Cheltenham (10 miles), Worcester (18 miles), Gloucester (11 miles) M5 J9 (1.5 miles) Ashchurch Station (2 miles) it is an excellent commuting base.

Ground Floor

Lounge 12'10"x11'1"
Kitchen 12'10"x6'7"

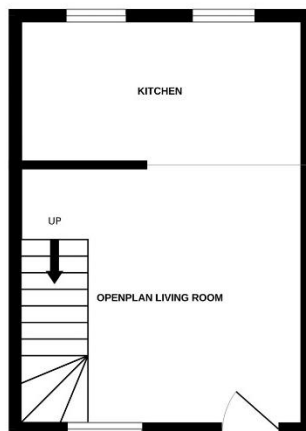
First Floor

Bedroom 1 9'x8'9"
Bedroom 2 7'7"x6'6"
Bathroom 6'6"x6'1"

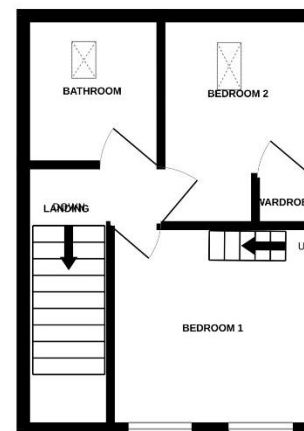
Attic space

Tewkesbury Borough Council Tax Band A

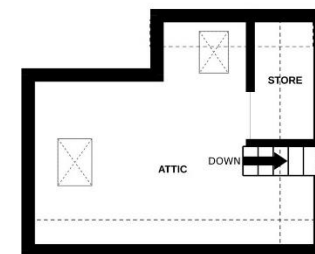
GROUND FLOOR



1ST FLOOR



2ND FLOOR



Guide Price £165,000 Freehold

Viewing strictly by arrangement with Engall Castle Ltd
155 High Street Tewkesbury Gloucestershire GL20 5JP
Office hours: Mon – Fri 9am to 5.30pm, Sat 9am to 2pm
email: sales@engallcastle.com

01684 293 246
www.engallcastle.com



This floorplan is provided for guidance only as an approximate layout of the property and should not be relied upon as a statement of fact.

Agents Note

These property details are set out as a general outline only and do not constitute any part of an Offer or Contract. Any services equipment, fittings or central heating systems have not been tested and no warranty is given or implied by Engall Castle Ltd that these are in working order. Buyers are advised to obtain verification from their solicitor or surveyor. Fixtures and fittings or other items are not included unless specifically described. All measurements, distances and areas are approximate and for guidance only and should not be relied upon for the purposes of fitting carpets or furniture etc. These property details and all statements within this document are provided without responsibility on behalf of Engall Castle Ltd or its employees or representatives and should not be relied on as statements of fact. Prospective purchasers must satisfy themselves as to the accuracy of all details pertaining to the property.

