

# COBBLESTONE

ESTATES

46 Jeffery Street,  
Gillingham, ME7 1BZ

Tel: 01634 780760  
info@cobblestoneestates.co.uk



**29 The Boardwalk, Pearl Lane, Gillingham,  
Kent, ME7 1FU**

**£1,300 pcm**

- SECURE ENTRY PHONE SYSTEM
- EPC GRADE B
- OPEN PLAN LIVING SPACE
- BALCONY
- FULLY FITTED KITCHEN
- WATER FRONT LOCATION
- TWO BEDROOM LUXURY APARTMENT
- EN-SUITE TO MASTER BEDROOM
- DOUBLE GLAZING
- EPC Rating B





Cobblestone Estates are delighted to offer an exclusive 2 bedroom apartment at Medway's stunning Victory Pier development. This apartment is designed and finished with the highest contemporary specification. The residents also benefit from access to on-site gym, free WiFi in the welcome foyer and private parking facilities. The apartment is located on the second floor and consist of; Entrance Hall leading to a spacious Sitting / Dining room with a fully fitted kitchen to the rear. There are two double bedrooms with wardrobes and the master benefits from an en-suite shower room. The main bathroom has a bath with a shower over , wash basin and WC. There is an entry phone system and key fob entry system. Gillingham is great for commuters with plenty of local open walks, sporting facilities and local shops, bars and cafes.

### Kitchen Area

01.93m x 2.91m (6' 4" x 9' 7") Wood effect flooring, fully fitted wall and floor units, fridge freezer, washing machine, dishwasher, electric hob and oven.

### Sitting/ dining room area.

3.63m x 4.51m (11' 11" x 14' 10") Light and spacious area with seating area and dining table, electrical points, access to the balcony.

### Master Bedroom

3.19m x 4.51m (10' 6" x 14' 10") Double sliding wardrobe, double glazed window, electric heating, electrical points, access to en-suite.

### En- Suite shower

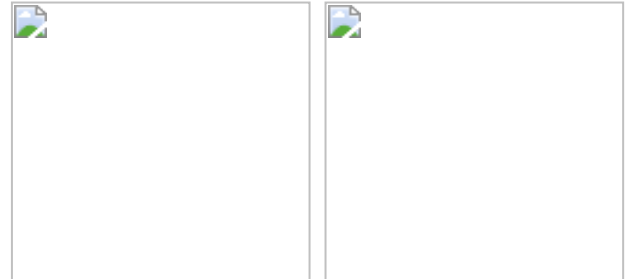
1.80m x 1.84m (5' 11" x 6' 0") Walk in shower, wash basin and WC

### Bedroom 2

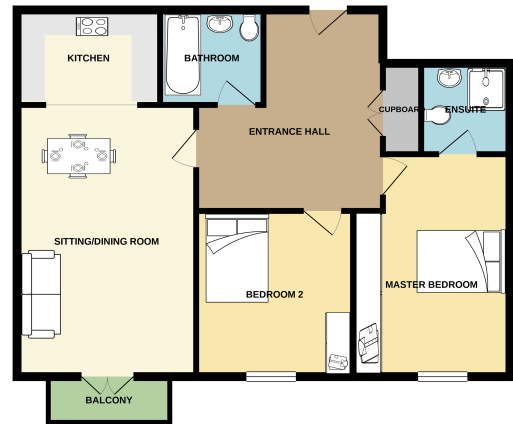
3.12m x 3.37m (10' 3" x 11' 1") Electric heater, wardrobe, electrical points , double glazed window.

### Bathroom

1.92m x 1.84m (6' 4" x 6' 0") Bath with shower over, wash basin and WC



GROUND FLOOR  
769 sq. ft. (71.5 sq. m.) approx.



2 BEDROOM APARTMENT  
TOTAL FLOOR AREA: 769 sq. ft. (71.5 sq. m.) (3597sq. ft.)  
\*When used in conjunction with the contract for purchase of the Property, this floor plan is intended as a guide only and does not constitute an offer of any specific property. The actual floor plan and specifications may vary from those shown on this floor plan. The actual floor plan and specifications may vary from those shown on this floor plan. The actual floor plan and specifications may vary from those shown on this floor plan.