



**57 Butter Row, Wolverton, Milton Keynes,
Buckinghamshire, MK12 5GB**

£159,000 Leasehold

- TWO DOUBLE BEDROOMS
- END TERRACE HOME
- WALKING DISTANCE TO WOLVERTON TRAIN STATION
- DOWNSTAIRS CLOAKROOM
- 60% SHARED OWNERSHIP
- RENT & SERVICE CHARGE £210.72 A MONTH
- £500 FIXTURE AND FITTINGS
- EPC Rating





Living Room

2.91m x 7.64m (9' 7" x 25' 1")

Bedroom 1

3.07m x 4.19m (10' 1" x 13' 9")

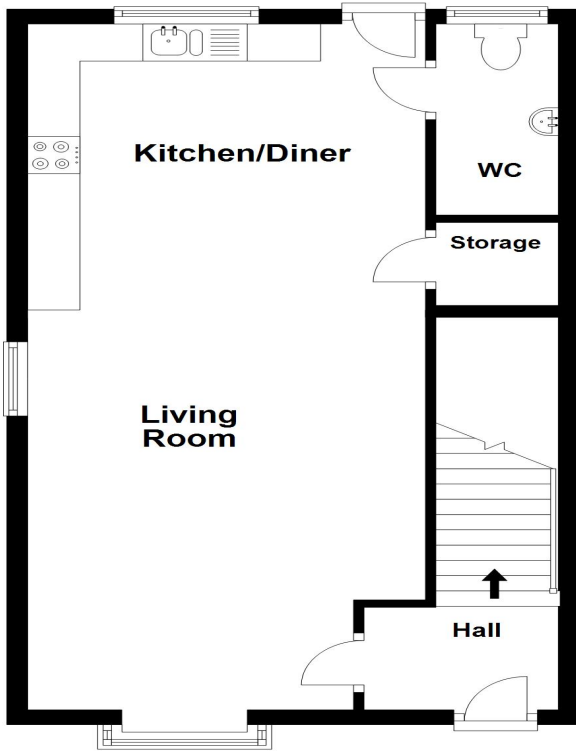
Bedroom 2

2.94m x 4.19m (9' 8" x 13' 9")

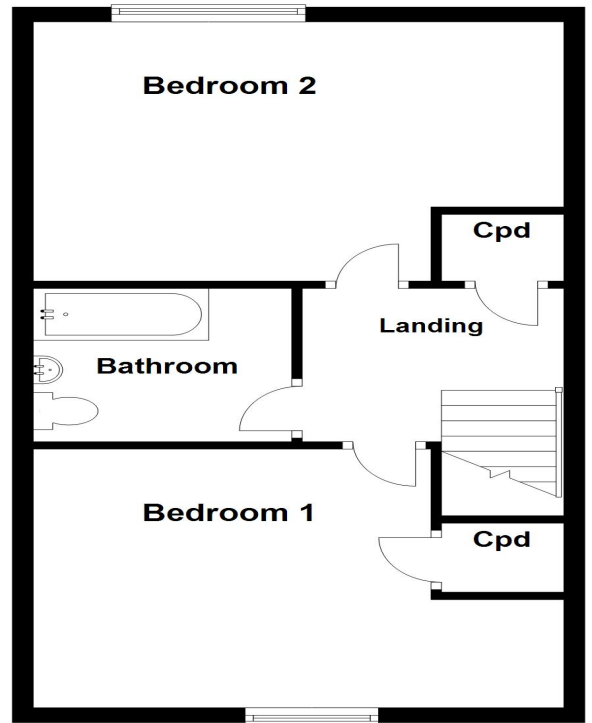
Disclaimer

Whilst we have endeavoured to prepare our sales particulars accurately none of the services, appliances or equipment have been tested. A buyer should satisfy themselves on such matters prior to purchase. Any measurements or distances mentioned in these particulars are for guide reference only. If such particulars are fundamental to a purchase, buyers should rely on their own enquiries. All enquiries should be directed to Elevation Estate Agents in the first instance.

Ground Floor



First Floor



elevation estate agents
Plan produced using PlanUp.