



23 Oakleigh Road, Bexhill-on-Sea, East
Sussex, TN39 4PY

£499,950

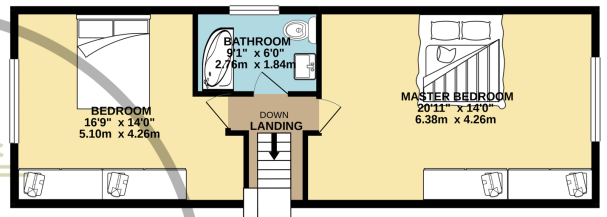
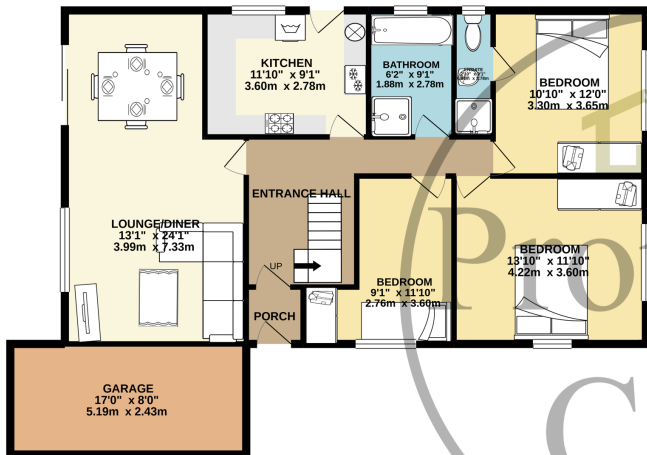


- Detached Chalet Bungalow For Sale
- Five Spacious Bedrooms
- Modern Fitted Kitchen
- Two Family Bathrooms & En Suite
- Front & Rear Gardens
- Single Garage & Off-road Parking
- Sought After Little Common Location
- Neutrally Decorated Throughout
- Sold With No Onward Chain
- Viewing Highly Recommended



GROUND FLOOR
1144 sq.ft. (106.3 sq.m.) approx.

1ST FLOOR
586 sq.ft. (54.4 sq.m.) approx.



TOTAL FLOOR AREA : 1730 sq.ft. (160.7 sq.m.) approx.

Whilst every attempt has been made to ensure the accuracy of the floorplan contained here, measurements of doors, windows, rooms and any other items are approximate and no responsibility is taken for any error, omission or mis-statement. This plan is for illustrative purposes only and should be used as such by any prospective purchaser. The services, systems and appliances shown have not been tested and no guarantee as to their operability or efficiency can be given.

Made with Metropix ©2021