

22 Coombfield Drive, Dartford, Kent, DA2 7LQ
£450,000 Freehold

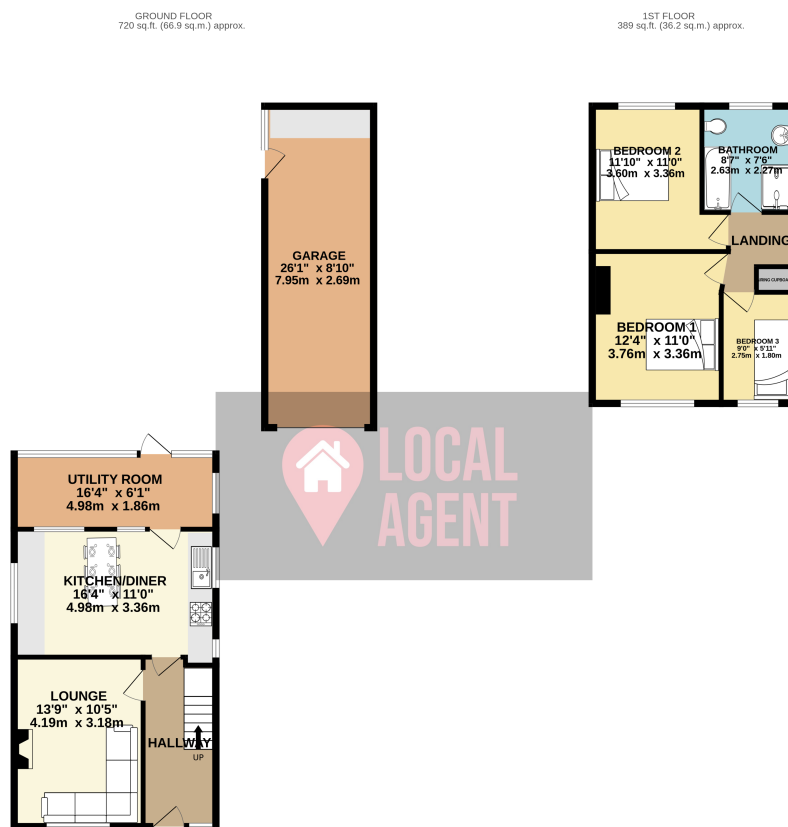


Description

This well presented three bedroom semi detached family home has a great sized garden which measures in excess of 100 feet, mainly laid to lawn with small trees and shrubs. The garden also benefits from a gate to the woods at the rear, and side pedestrian access to the driveway to the front. The house is on a quiet road, with no through access and neighbours are friendly and helpful.

Use our online diary to request your viewing.

Situated in the rural village of Darenth, the location is surrounded by agricultural fields and only a short walk to Darenth Country Park, which has history dating back to the Saxon times. The country park has excellent woodland walks and is surrounded by horse paddocks, which is ideal for a rural lifestyle. The proximity to the Darent Valley Hospital has become very popular for families for work and access, plus Bluewater shopping centre, which is only a short drive away. Darenth Community Primary School is within walking distance and has a Good Ofsted rating, and Fleetdown Primary School boasts an Outstanding rating which is approximately 1.6 miles away. There are four grammar schools in the Bexley borough and The Leigh Academy is approximately 1.7 miles away with many children walking to school from Darenth. For London Commuters, Dartford main line station is 2.8 miles away, Longfield station is approximately 3.5 miles away and Ebbsfleet International Station is approximately 5.6 miles away. Easy access to the A2 and M25 Networks to travel around London, Stansted and Gatwick Airport as well as down to coastal routes.



TOTAL FLOOR AREA: 1109 sq.ft. (103.1 sq.m.) approx.
Whilst every attempt has been made to ensure the accuracy of the floorplan contained here, measurements