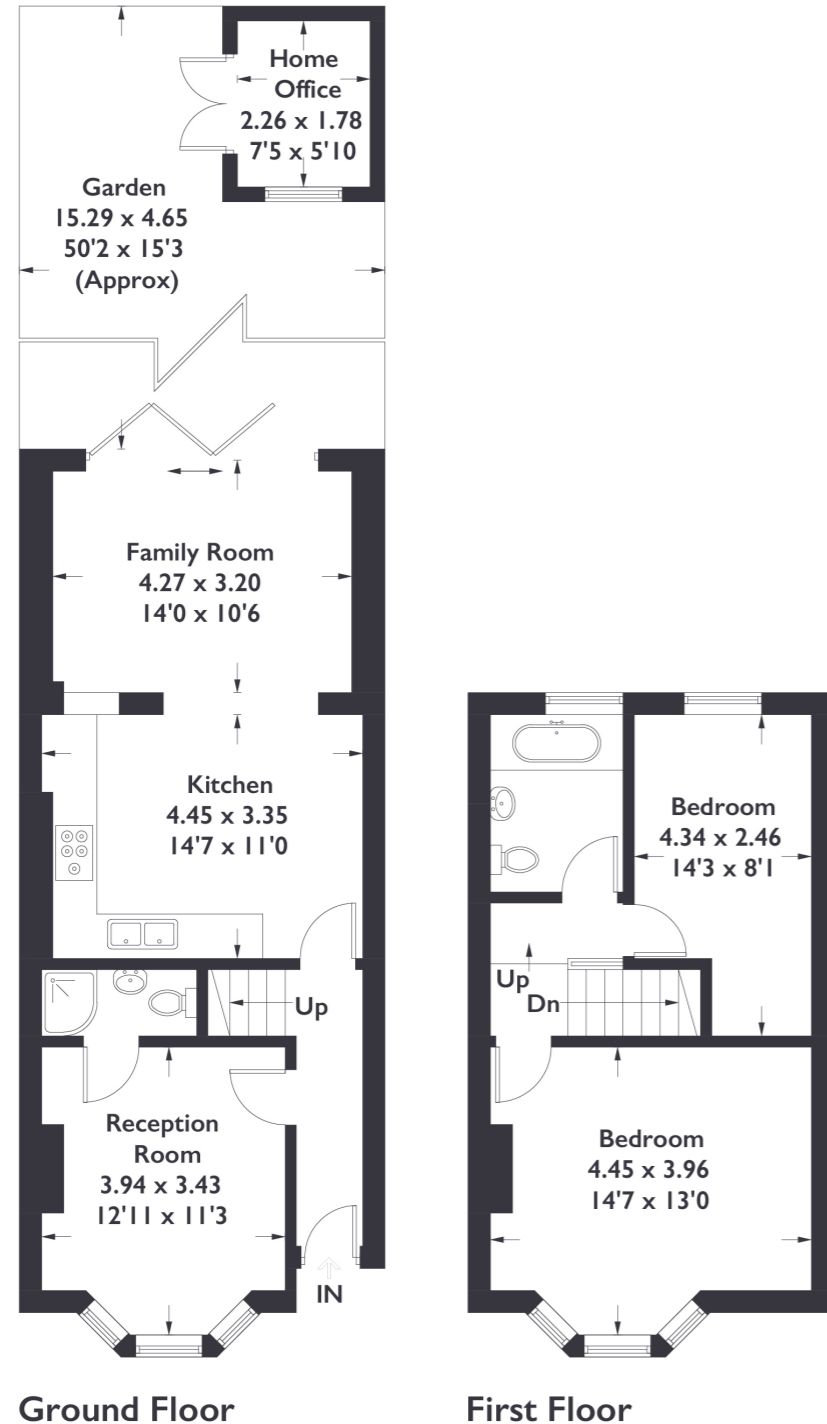


Altenburg Avenue, W13

Approximate Gross Internal Area = 85.8 sq m / 924 sq ft
Home Office = 4.3 sq m / 46 sq ft
Total = 90.1 sq m / 970 sq ft



2 BEDROOM HOUSE

Altenburg Avenue, W13
GUIDE PRICE £875,000

Welcome to this charming two bedroom, one bathroom property that effortlessly blends modern living with original character. Upon entering, you'll find a separate reception room showcasing beautiful original features. The hallway leads you to a stunning open plan kitchen and living/dining area, perfect for entertaining and family gatherings. The ground floor also includes a convenient shower room.

FEATURES

- Two Bedrooms
- One Bathroom / Downstairs W/C Shower Room
- Open Plan Kitchen Dining
- Potential To Extend STPP
- Fielding Primary School
- Northfields Station

Measured in accordance with RICS Code of Measuring Practice. To be used for identification and guidance purposes only. Whilst every care is taken in the preparation of this plan, please check all dimensions, shapes and compass bearings before making any decisions reliant upon them. www.london58.com © 2024 hello@london58.com



2 BEDROOM HOUSE

Altenburg Avenue, W13

Bifold doors open up to reveal a gorgeous landscaped south facing garden, complete with a fantastic office space at the far end, ideal for remote work or a creative retreat.

Upstairs, you'll find two spacious double bedrooms and a well appointed bathroom. Additionally, there is potential to extend into the loft, subject to planning permission (STPP), offering an opportunity to further enhance this delightful home.

Situated in an ideal location, the property is just moments away from Northfields' amenities, Northfields station, and falls within the catchment area of the highly regarded Fielding Primary School. This home is perfect for families and professionals alike, providing a blend of convenience, comfort, and potential.

