



£280,000 Freehold



66 Hill House Road, Dartford, Kent DA2
6HQ



PROPERTY DESCRIPTION

GUIDE PRICE £280,000 - £300,000 • RE/MAX SELECT are delighted to offer for sale this end-of-terrace house, situated on a quiet residential road close to amenities including Bluewater shopping centre, schools, and transport links.

This property comprises 2 bedrooms, good-sized living/dining room, fitted kitchen, and family bathroom. Further benefits include off street parking, double glazing, gas central heating, and 55ft (approx) rear garden.

Total Internal Area approx 645.29 sq ft (59.95 sq m)





ROOM DESCRIPTIONS

Ground Floor

Living / Dining Room

6.67m x 4.00m (21' 11" x 13' 1") Wood-effect flooring, radiators, double glazed windows; carpeted stairs leading to first floor.

Kitchen

2.65m x 2.03m (8' 8" x 2' 03") Tiled flooring; range of wall and base units with complementary worktops and tiled splashback; stainless steel sink and drainer with mixer tap; oven/grill, electric hob; space and connections for fridge/freezer; space and connections for washing machine; double glazed windows; door leading to rear garden.

Family Bathroom

2.14 x 1.60m (7' 0" x 1' 6") Tiled flooring, tiled walls; panelled bath with mixer tap and rainfall shower attachment; wash-hand basin, w/c, double glazed frosted window.

First Floor

Bedroom

3.80 x 3.28m (12' 6" x 10' 9") Carpeted, radiator, storage cupboard, double glazed windows.

Bedroom

4.00 x 2.46m (13' 1" x 8' 1") Carpeted, radiator, storage cupboard, double glazed window.

Front Garden

Paved.

Rear Garden

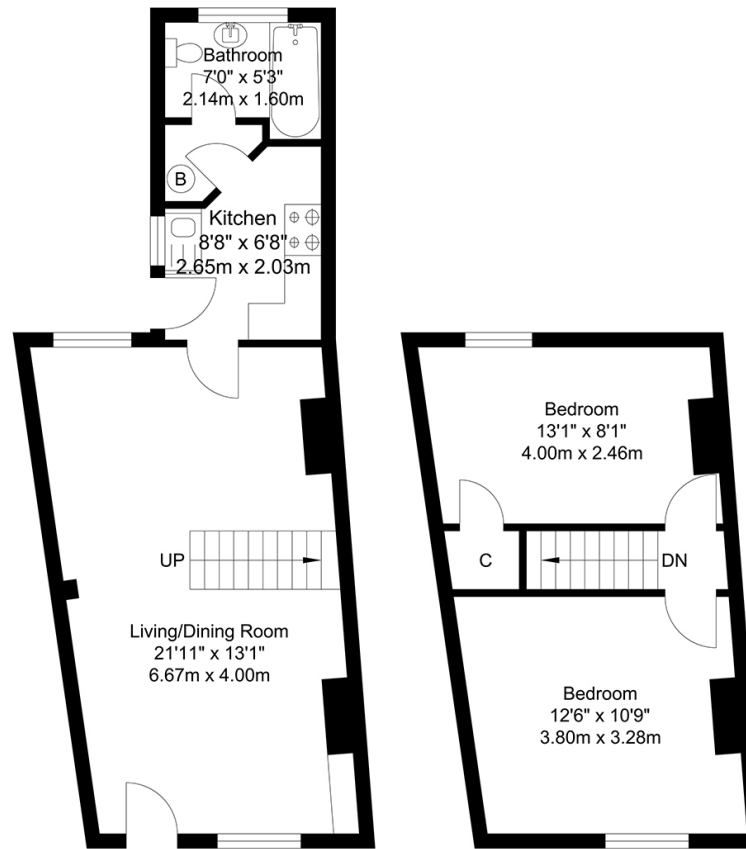
Lawn, outdoor tap; mature shrubs and bushes; side gate, access for parking.

Information

- Close to schools
- Easy access to A2 / M25
- 1.1 miles (approx) to Dartford Thames Crossing
- 0.9 miles (approx) to Stone Station with Thameslink
- 1.3 mile (approx) to Dartford Station with Thameslink (direct to 8 London Terminal stations)
- 3.0 miles (approx) to Ebbsfleet International / Eurostar
- 0.7 mile (approx) to Bluewater shopping centre
- 0.4 miles (approx) to Darent Valley Hospital
- Council Tax: Band B



FLOORPLAN



Ground Floor
Approximate Floor Area
373.93 SQ.FT.
(34.74 SQ.M.)

First Floor
Approximate Floor Area
271.35 SQ.FT.
(25.21 SQ.M.)

TOTAL APPROX FLOOR AREA 645.29 SQ. FT / 59.95 SQ. M
For Identification Purposes Only.

