

REDUCED

£275,000 Freehold



21 Rose Gardens, Lea, Gainsborough, Lincolnshire. DN21 5EW

- 3 BEDROOM DETACHED BUNGALOW
- NEW BUILD
- NEW CARPETS AND NEUTRAL COLOUR SCHEME THROUGHOUT
- TURFED REAR GARDENS & SINGLE GARAGE
- FITTED WARDROBES & FLOORING INCLUDED



PROPERTY DESCRIPTION

THE SALISBURY**SOUGHT AFTER VILLAGE LOCATION**NEW BUILD BUNGALOW**SET IN THE SMALL IDYLIC LOCATION OF LEA, GAINSBOROUGH**ATTRACTIVE 3 BED DETACHED HOME WITH SINGLE GARAGE**THREE SPACIOUS BEDROOMS**FLOORING THROUGHOUT**TURF TO REAR GARDEN**STYLISH FITTED WARDROBE TO BEDROOM 1**INTEGRATED OVEN AND FRIDGE FREEZER**CALL US TODAY TO SECURE A VIEWING!

Situated in the sought after village of Lea is this beautiful double fronted detached family home offering fantastic space both internally and externally. The bungalow briefly comprises an entrance hall, lounge, modern kitchen diner, utility room, and offers three spacious bedrooms serviced by a family bathroom suite. Externally the home has a fully enclosed turfed rear garden & single garage. Viewings are highly recommended!



ROOM DESCRIPTIONS

ROOM DIMENSIONS

Room Dimensions:

Lounge - 3.90m x 4.17m 12'9"m x 15'6"

Kitchen / Dining - 3.11 x 3.08 10'1" x 10'3"

Master Bedroom - 3.72 x 3.90m 12'2" x 12'10"m

Bedroom 2 - 2.70 x 3.88 8'10" x 12'9"

Bedroom 3 - 2.32 x 3.08 7'8" x 10'1"

Bathroom - 1.72 x 2.76 5'8" x 9'1"





THE SALISBURY

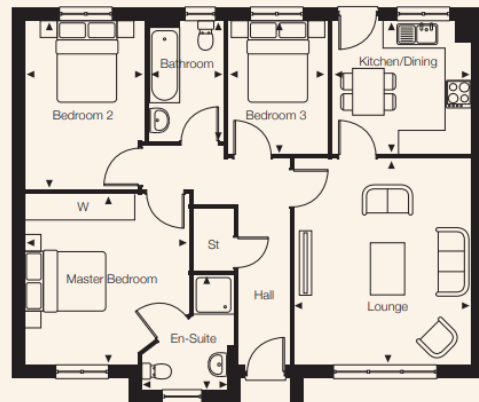
THREE BEDROOM BUNGALOW

A pretty double fronted bungalow with good storage in the central hallway which leads to a spacious living room overlooking the front garden, and follows to a fully fitted kitchen / dining room with a door to the rear garden.

A lovely master bedroom with en-suite shower room, two further generous bedrooms, and a family bathroom. With a single garage, this makes it a great choice for your new home.

ROOM DIMENSIONS

| | | |
|------------------|-----------------|--------------------|
| Lounge | 3.90 x 4.17 | 12'9" x 15'6" |
| Kitchen / Dining | 3.11 x 3.08 | 10'1" x 10'3" |
| Master Bedroom | 3.72 (M) x 3.90 | 12'2" (M) x 12'10" |
| Bedroom 2 | 2.70 (M) x 3.88 | 8'10" (M) x 12'9" |
| Bedroom 3 | 2.32 (M) x 3.08 | 7'8" (M) x 10'1" |
| Bathroom | 1.72 x 2.76 | 5'8" x 9'1" |



All room dimensions are shown ↔x↕ (M) = Maximum dimensions.