



Raglan Road,

Bromley, Kent. BR2 9NW

Tenure: Freehold

2 Bedrooms | 2 Reception Rooms | 2 Bathrooms



A Charming two double bedroom Victorian terrace house situated on a quiet residential road just moments from the sought after Raglan Primary school and local amenities. Upon entering this period property, you will be greeted by a sizable through lounge which leads through to a modern contemporary kitchen with a useful ground floor W.C. To the first floor are two double bedrooms and a four-piece bathroom suite. Externally the rear garden is mainly laid to lawn with a patio area. Further benefits include gas central heating and window shutters throughout. EPC Rating: E

Enquiries To:

T: 020 8467 2252

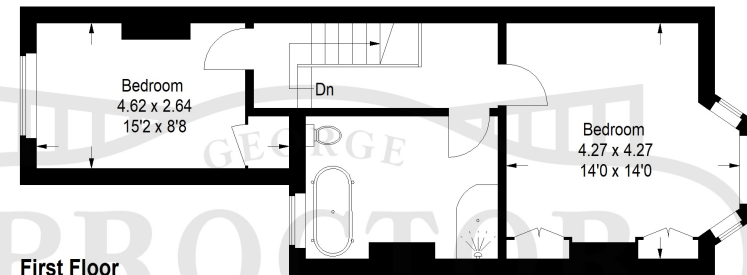
E: beosales@georgeproctor.com



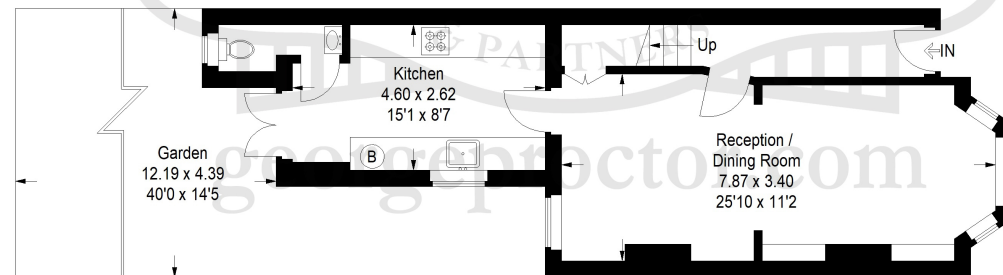
The Bickley Estate Office

Southborough Road, Bickley, Kent, BR1 2EB

Approximate Gross Internal Area = 91.3 sq m / 983 sq ft



First Floor



Ground Floor

These particulars whilst believed to be accurate are made without responsibility on the part of the vendor or agents, their accuracy is not guaranteed nor do they form part of any contract and no warranty is given. Services or appliances have not been tested and no guarantee can be given as to their operation, buyers should seek professional advice where necessary. All measurements are approximate and may be rounded to the nearest three inches (10 cm). Floor plans, where shown, are indicative only. Any photographs included may be taken with the use of a wide angle lens. If there is a matter of particular interest please contact us for further information, especially before travelling any distance to view. Map reproduced by permission of Geographers A-Z Map Co Ltd. Licence No. A0514. This map is based upon Ordnance Survey maps with the permission of the controller of Her Majesty's Stationary Office.