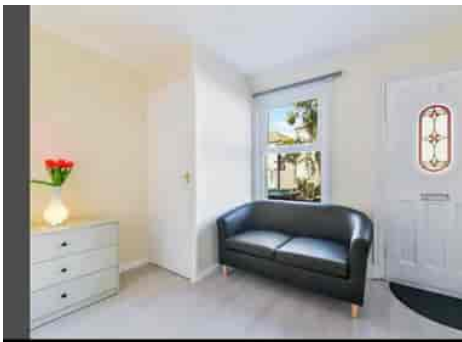


Truuli



Napier Road, South Croydon, Surrey, CR2 6HG

£400,000 Freehold

- Walking distance to south croydon station
- Walking distance to Sanderstead Station
- Family friendly community
- Potential HMO usage (subject to planning)
- Near by to South Croydon bus garage
- Cul de sac location

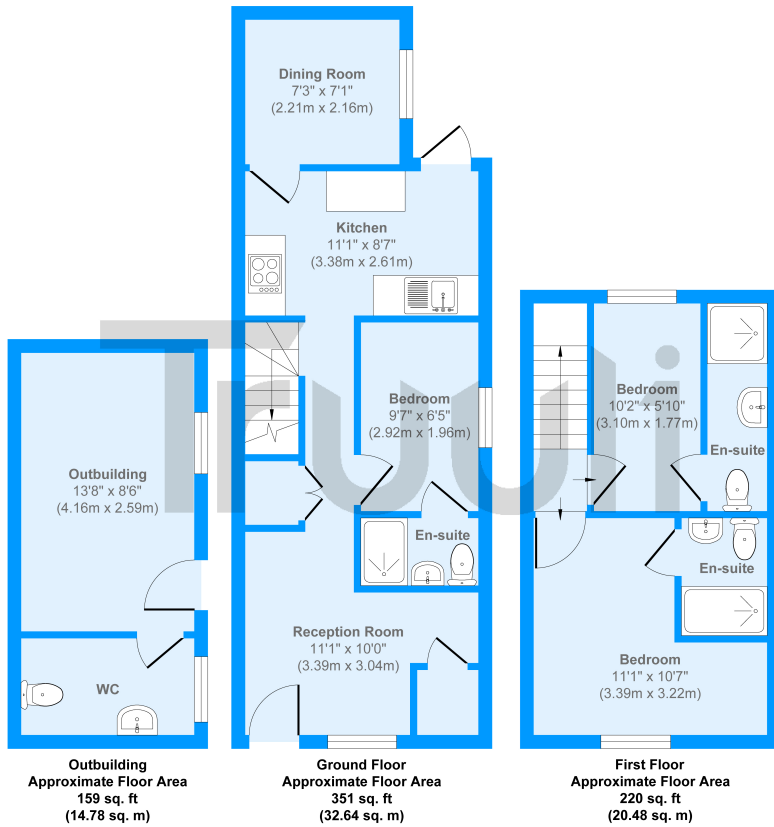
Napier Road, South Croydon, Surrey, CR2 6HG

£400,000 Freehold

Presented in good order throughout, is this exceptional three bedroom, semi-detached home with ensuite bathrooms for every bedroom and a versatile summer house.

The property has unbeatable transportation access to all over London and Surrey, perfect for commuters and family, surrounded by top amenities and great schools.

Napier Road



Approx. Gross Internal Floor Area 730 sq. ft / 67.90 sq. m (Including Outbuilding)

Produced by Elements Property

