

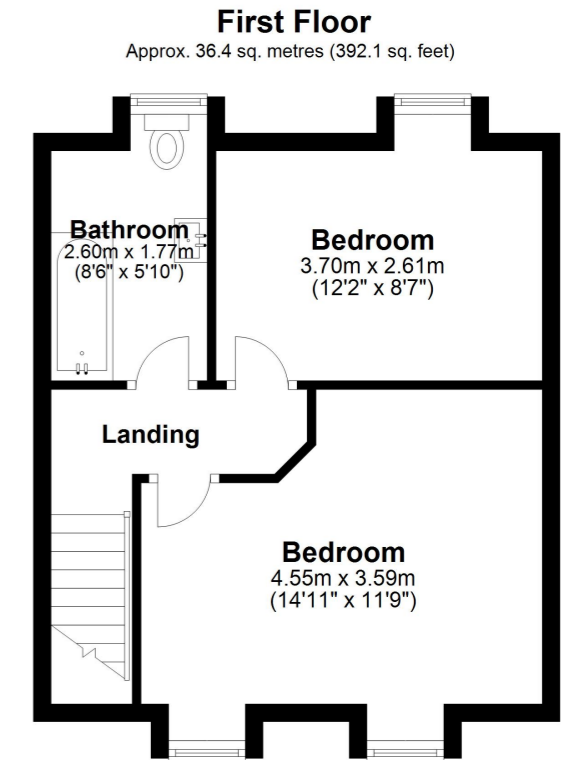
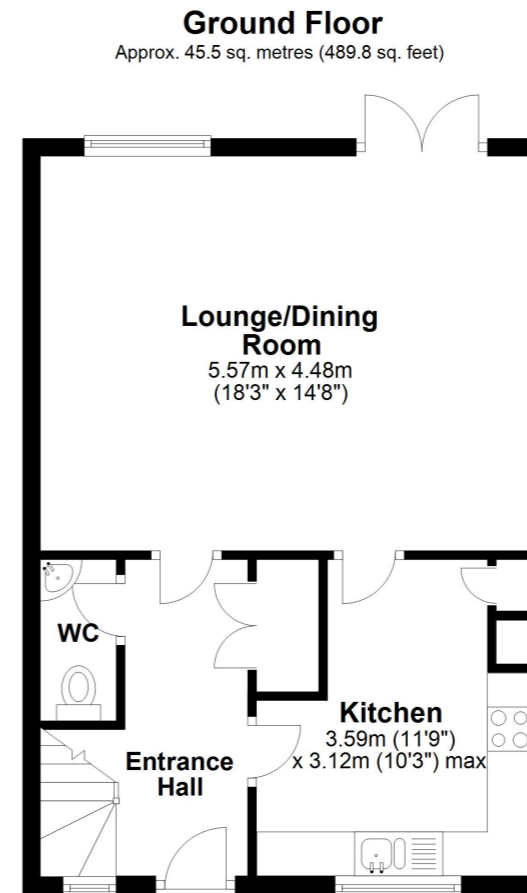
370 Canterbury Road

DENSOLE, Folkestone
CT18 7BG

£325,000 FREEHOLD

FOR SALE WITH BURNAP + ABEL... Welcome to the newest development in Densole - located on the popular Canterbury Road, close to local amenities and just a short drive from Folkestone & Canterbury. This stunning collection of 3 high specification bungalows offers a perfect blend of modern design and functionality. Each bungalow boasts a sleek bathroom and kitchen, complete with high-end finishes and fixtures. With 2 bedrooms in each semi-detached unit, there is ample space for comfortable living. The detached unit features an additional level of privacy, making it the ideal retreat. Two parking spaces per property ensure convenience for residents and guests alike, while solar panels provide eco-friendly energy solutions. Don't miss out on this rare opportunity to own a contemporary home in one of Densole's most sought-after locations. Schedule a viewing today and make your dream home a reality on Canterbury Road.





Total area: approx. 81.9 sq. metres (881.9 sq. feet)

Whilst every attempt has been made to ensure the accuracy of the floor plan contained here, measurements of doors, windows, rooms and any other items are approximate and no responsibility is taken for any error, omission or mis-statement. This plan is for illustrative purposes only and should be used as such by any prospective purchaser.
Plan produced using PlanUp.