

# Bere Lane

Glastonbury, BA6 8BB

COOPER  
AND  
TANNER



£250,000 Freehold

3 2 1 EPC C

## Description

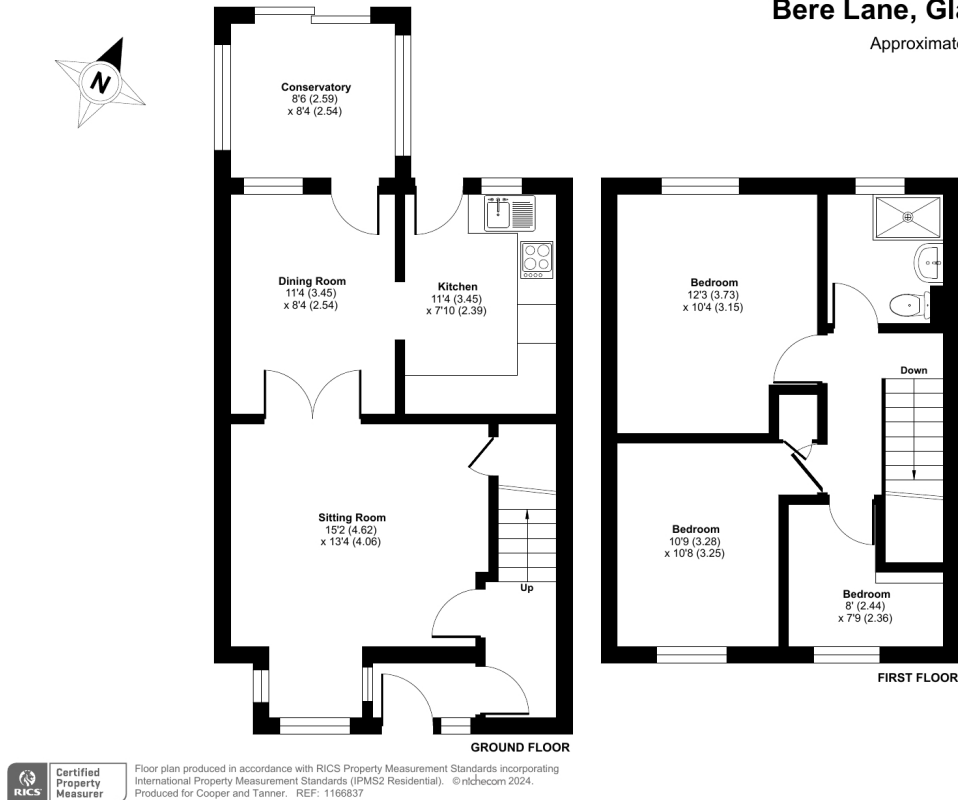
Brought to market with no onward chain, this spacious three bedroom home offers well-proportioned accommodation, with a South facing garden and views of Glastonbury Tor. The ground floor accommodation is comprised of an entrance hallway, sitting room, dining room, kitchen and conservatory. Stairs lead to three bedrooms and a family bathroom on the first floor, with the largest room benefiting from views of Glastonbury Tor and Butleigh Moor. There is a sizeable garden to the front of the property, and an enclosed, South facing garden to the rear. Primarily laid to lawn, the garden features a patio and pedestrian access leading to a single garage (located in a block nearby).



## Bere Lane, Glastonbury, BA6

Approximate Area = 915 sq ft / 85 sq m

For identification only - Not to scale



### Features

- NO ONWARD CHAIN
- Unexpectedly returned to market
- Within walking distance of Glastonbury High Street and Glastonbury Tor
- Views of GLASTONBURY TOR
- Excellent buy to let investment or first time buy
- Scope for improvement/modernisation
- Well-proportioned rooms throughout
- Two reception rooms and a conservatory
- Enclosed SOUTH FACING garden
- GARAGE and OFF ROAD PARKING
- Freehold - Council Tax Band C

### Local Information

- Council Tax Band C
- Tenure Freehold
- EPC Rating C

#### GLASTONBURY OFFICE

Telephone 01458 831077

41, High Street, Glastonbury, Somerset BA6 9DS

[glastonbury@cooperandtanner.co.uk](mailto:glastonbury@cooperandtanner.co.uk)

**COOPER  
AND  
TANNER**

Important Notice: These particulars are set out as a general outline only for the guidance of intended purchasers and do not constitute, nor constitute part of, an offer or contract. All descriptions, dimensions, reference to condition and necessary permissions for use and occupation, warranties and other details are given without responsibility and any intending purchasers should not rely on the matters as statements or representations of fact but must satisfy themselves by inspection or otherwise as to the correctness of each of them.

