



Tel: 01242 676767

www.cotswoldestateagents.co.uk

41a Church Road, Bishops Cleeve, Cheltenham, GL52 8LP

7, Bluebell Court
Bishops Cleeve GL52 8RU

£185,000



FOR SALE

Set in an attractive setting with lovely views over an open green is this stone built two bedroom ground floor flat. The spacious well planned living accommodation features open plan lounge/dining/ kitchen with built-in and integrated appliances, modern bathroom suite and two good size bedrooms with built-in wardrobes. To the exterior there is a small enclosed garden and allocated off road parking. No onward Chain

Entrance porch to entrance hall with doors to open plan lounge/dining/kitchen, bathroom and bedrooms one and two. Open plan lounge/dining/kitchen: window with lovely views over open green, large walk-in storage cupboard and wooden laminate flooring. Kitchen area: window to rear aspect, ceramic tiled flooring and fitted with a matching range of eye and base level storage units with built-in and integrated appliances to include fan assisted oven, gas hob and extractor hood, integrated dishwasher and fridge freezer, space and plumbing for washing machine. Bathroom: window to side aspect, modern white suite comprising bath with tiled splashback fitted with shower unit, hand basin and WC. Bedroom one: French doors to rear garden, wooden laminate flooring and built-in double wardrobe. Bedroom two: window with views over open green and wooden laminate flooring.

Exterior: Small partly enclosed garden with hedging being laid to lawn and allocated off road parking for one vehicle.

Open plan Lounge/dining/kitchen: 17' 9 max x 16' 4

Bedroom one: 11' 9 max x 8' 9 max

Bedroom two: 7' 7 x 7' 4

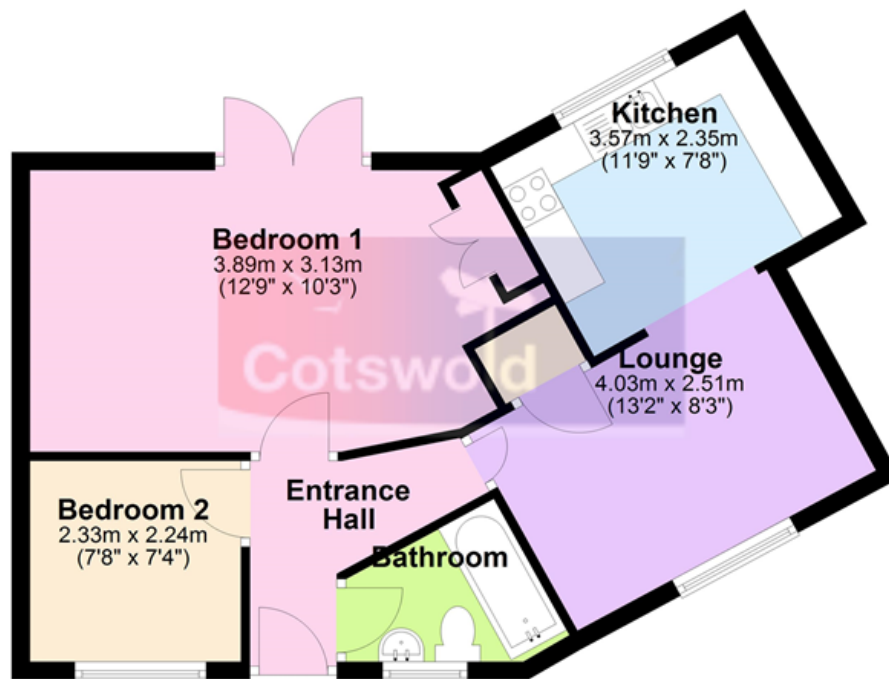






Ground Floor

Approx. 47.8 sq. metres (514.8 sq. feet)



Total area: approx. 47.8 sq. metres (514.8 sq. feet)

11mg iPad

Energy Efficiency Rating		
	Current	Potential
Very energy efficient - lower running costs		
(92+) A		
(81-91) B		
(69-80) C	79	79
(55-68) D		
(39-54) E		
(21-38) F		
(1-20) G		
Not energy efficient - higher running costs		
England, Scotland & Wales		
EU Directive 2002/91/EC		