



Elmside Walk

Elmside Walk | Hitchin | Hertfordshire | SG5 1HB

www.stonegate-estates.co.uk



ELMSIDE WALK

Property Description

We are delighted to bring to the market this well presented and much improved two bedroom second floor retirement apartment.

This assisted living development is very well placed within Hitchin town centre and offers easy access to local shops and restaurants as well as the local park and swimming pool.

The apartment has a southerly aspect and has new carpets throughout as well as recent redecoration, The kitchen has fitted appliances and there is a well appointed wet room. The development has staff on site 24 hours a day as well as a communal lounge and gardens.

There is a restaurant in the adjoining Elmside development and on site parking.

The lease has until 2133 and service charge costs are available on request.

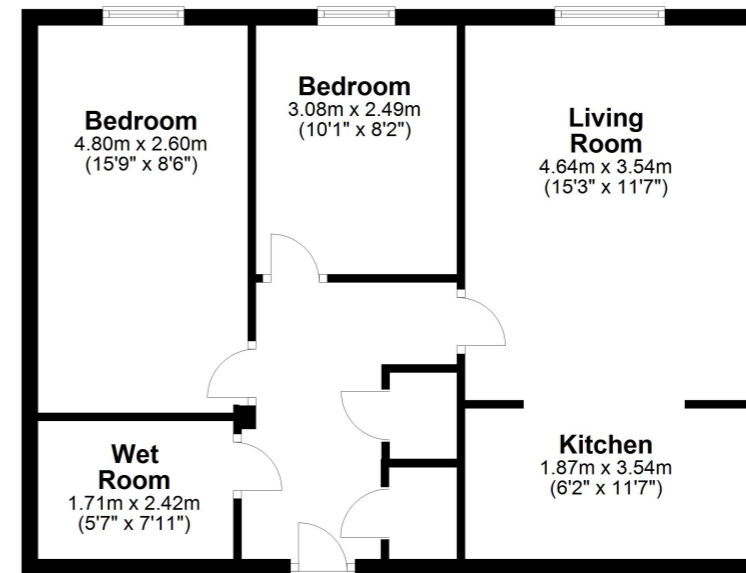
£350,000 Leasehold





Floor Plan

Approx. 58.4 sq. metres (628.4 sq. feet)



Total area: approx. 58.4 sq. metres (628.4 sq. feet)

All measurements shown are approximate and for guidance only. Garages and workshops are not included in any gross floor areas unless integral to the main building where they will be included. Plan produced using PlanUp.



- Two Bedroom Retirement Apartment
- Assisted Living
- Town Centre Location
- Second Floor
- Immaculately Well Presented
- Communal Gardens
- Residents Lounge
- 24 Hour Assistance

EPC Rating:

Stonegate Estate Agents

01462 438979

sales@stonegate-estates.co.uk | www.stonegate-estates.co.uk

