



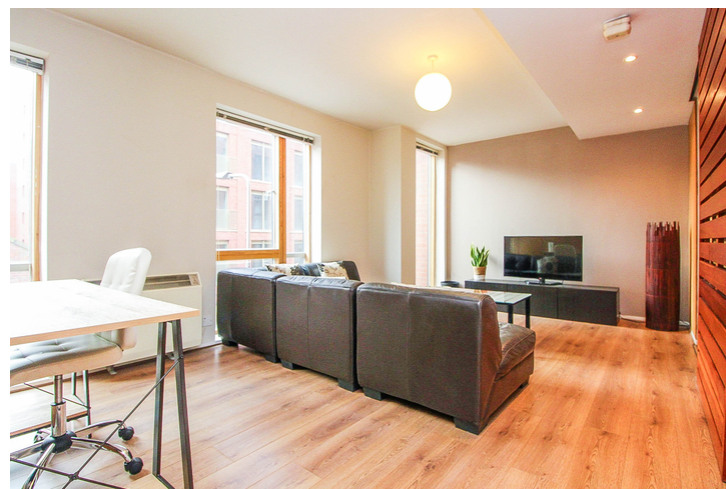
HULME HALL ROAD
CASTLEFIELD

£775

-  1 BEDROOM
-  1 BATHROOM
-  1 RECEPTION
-  AVAILABLE
22/02/21

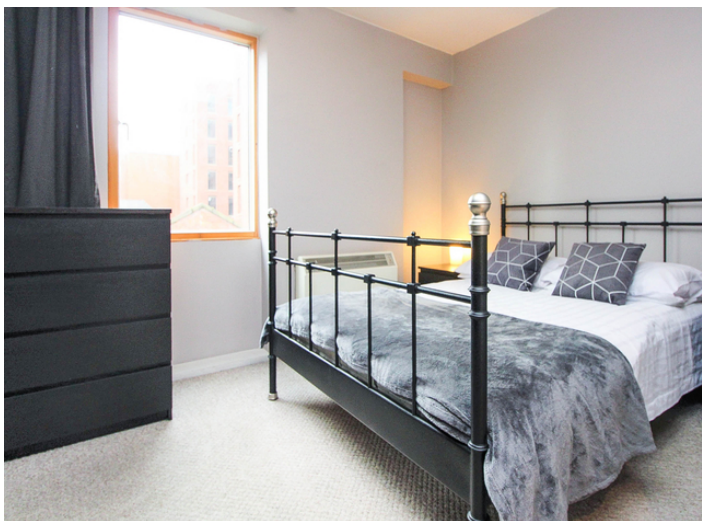


VITALSPACE
INDEPENDENT ESTATE AGENTS



Hulme Hall Road, Castlefield, M15 4LB

****AVAILABLE 22/02/21**** - VITALSPACE ESTATE AGENTS are pleased to offer for rental this stunning loft style apartment with impressive features including bright lounge with private balcony. The popular Castlefield location is idyllic with neighbouring canal network and picturesque views. Well presented throughout and benefiting from attractive converted accommodation comprises; entrance hallway, a beautifully presented living/dining room area surrounded by expansive windows with access to a balcony. An modern kitchen helps contribute to a practical open plan space. A three piece bathroom can also be found in the property. The Britannia Mills development is an Iconic, and well sought after Urban Splash project and is finished to a high standard retaining bundles of its original character throughout. The development benefits from a residents gym, beautiful communal gardens as well as a tranquil outside seating area. AVAILABLE 22/02/21 on a furnished basis. Contact VitalSpace Estate Agents for further information.



Room

****AVAILABLE 22/02/21**** - VITALSPACE ESTATE AGENTS are pleased to offer for rental this stunning loft style apartment with impressive features including bright lounge with private balcony. The popular Castlefield location is idyllic with neighbouring canal network and picturesque views. Well presented throughout and benefiting from attractive converted accommodation comprises; entrance hallway, a beautifully presented living/dining room area surrounded by expansive windows with access to a balcony. An modern kitchen helps contribute to a practical open plan space. A three piece bathroom can also be found in the property. The Britannia Mills development is an Iconic, and well sought after Urban Splash project and is finished to a high standard retaining bundles of its original character throughout. The development benefits from a residents gym, beautiful communal gardens as well as a tranquil outside seating area. Available Now on a furnished basis. Contact VitalSpace Estate Agents for further information.



Environmental Impact (CO₂) Rating

Very environmentally friendly - lower CO ₂ emissions	Predicted
(92 to 100) A	
(81 to 91) B	
(69 to 80) C	
(56 to 68) D	
(39 to 54) E	
(21 to 38) F	
(1 to 20) G	
Not environmentally friendly - higher CO ₂ emissions	

England, Wales & N.Ireland EU Directive 2002/91/EC