

Telephone

+44 (0)1268 947947

sales@elliottandsmith.co.uk

Website

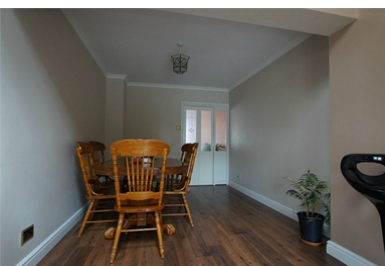
www.elliottandsmith.co.uk

Elliott and Smith Partnership

57 High Street

Rayleigh

Essex SS6 7EW

SALES.
LETTINGS.
ADVICE.

Wyburns Avenue, Rayleigh

£1,900 pcm

**** EXTENDED 3 BEDROOM FAMILY HOME IN THE SOUGHT AFTER DAWES HEATH ROAD AREA OF RAYLEIGH **** Available from the 19th January. Modern fitted kitchen OPEN TO FAMILY DINING AREA, UTILITY ROOM & Ground floor WC. Fully double glazed and modern gas central heating system. Close to Wyburns Primary School & short walk to High St. Tenants household income requirements = £57,000.

- EXTENDED 3 BEDROOM FAMILY HOME
- LARGE OPEN PLAN KITCHEN FAMILY ROOM / DINER
- SEPARATE UTILITY AREA
- GROUND FLOOR WC
- SEPARATE FRONT LIVING ROOM
- WEST FACING GARDEN

PORCH

6' 1" x 3' 1" (1.85m x 0.94m)

ENTRANCE HALL

12' 2" x 6' 6" (3.71m x 1.98m)

LIVING ROOM

13' 7" max x 11' 10" (4.14m x 3.61m)

DINING AREA

12' 1" x 9' 5" (3.68m x 2.87m)

KITCHEN DINER

17' 5" x 9' 3" (5.31m x 2.82m)

UTILITY ROOM

12' 5" x 8' 10" max (3.78m x 2.69m)

GROUND FLOOR WC

LANDING

BEDROOM ONE

11' 11" x 10' 5" (3.63m x 3.17m)

BEDROOM TWO

11' 10" x 10' 3" (3.61m x 3.12m)

BEDROOM THREE

8' 1" x 7' 1" (2.46m x 2.16m)

BATHROOM

8' 2" x 5' 10" (2.49m x 1.78m)



VIEWING ARRANGEMENTS

Viewing is strictly by appointment only through Elliott and Smith Partnership.

DISCLAIMER PROPERTY DETAILS

These particulars, whilst believed to be accurate are set out as a general outline only for guidance and do not constitute any part of an offer or contract. Intending purchasers should not rely on them as statements or representation of fact, but must satisfy themselves by inspection or otherwise as to their accuracy. We have not carried out a detailed survey nor tested the services, appliances and specific fittings. Room sizes should not be relied upon for carpets and furnishings. The measurements given are approximate. No person in this firms employment has the authority to make or give any representation or warranty in respect of the property.