





A luxury, one bedroom, second (top) floor apartment in highly sought after location

- Second (Top) Floor Apartment
- Open Plan Living Room
- Lounge, Dining & Kitchen Areas
- Double Bedroom with Fitted Wardrobes
- Modern Bathroom
- Allocated Parking Space

Description

A luxury, one bedroom, second (top) floor apartment in highly sought after location. The property certainly has a luxury feel about it, the building is set in beautiful landscaped gardens and is surrounded by quality detached houses of significant value. A secure intercom controlled entrance door leads to a communal lobby and stairs that rise to the second floor. Private entrance door open to a hallway with large storage cupboard, which is plumbed for a washing machine. There is a large, open plan living room with kitchen, dining and lounge areas. The kitchen has a built-in oven and hob and there is a freestanding dishwasher and fridge/freezer. The double bedroom is located at the rear and has a large four door fitted wardrobe. Lastly there is a good size, modern bathroom with a mains fed shower over the bath. Externally there is one allocated parking space and there are two communal visitor parking spaces.



Location

Hartford is a bustling Cheshire village with an excellent range of local facilities including a hub of shops at its centre, offering everything you could want or need. There are three public houses in the village, The Red Lion, The Coachman and Hartford Hall Hotel, in addition there are two wine bars/bistros; Chime, located in the heart of the village and The Hart of Hartford, which is located on School Lane. Two railway stations serve the village with the West Coast Main Line service running through Hartford, enabling access to London within two hours. Trains to Manchester and Chester run from Greenbank station. The A556 and A49 easily facilitate access to the region's major road network with Manchester and Liverpool airports both within 20 miles. Nearby Northwich caters for a more comprehensive range of amenities, including leading supermarkets with Waitrose, Sainsbury's and Tesco all represented.

Tenure

EPC Rating:

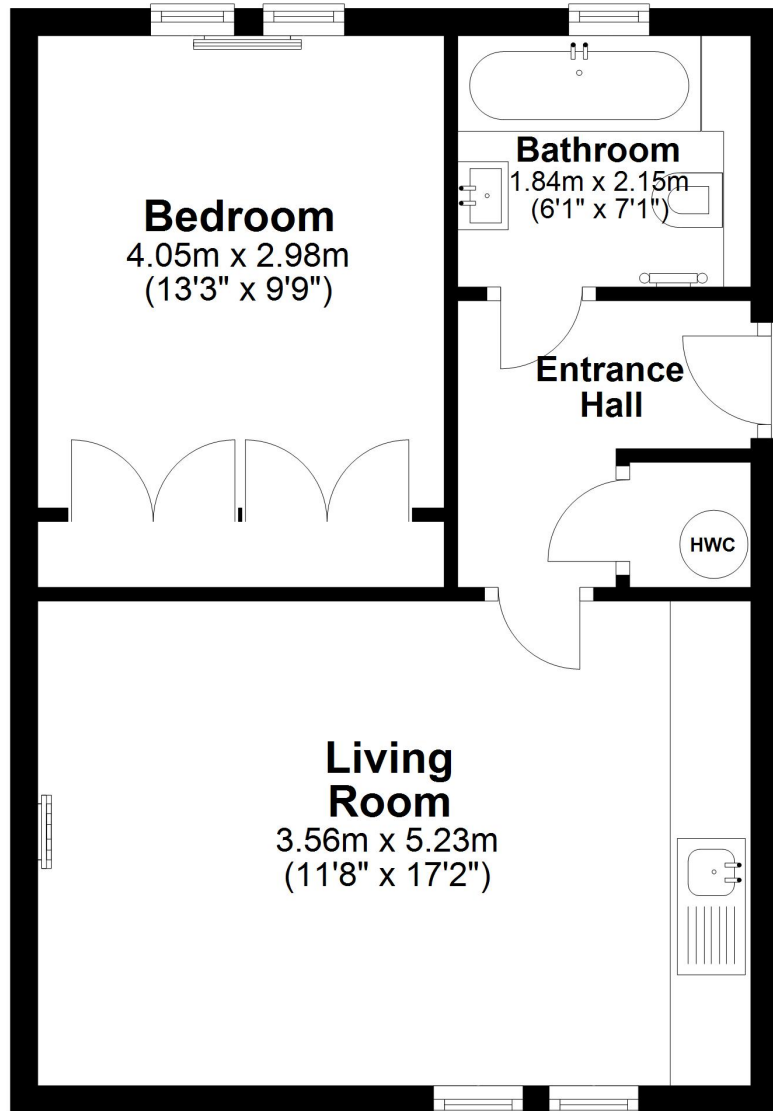
Important Notes

Type Here



Second Floor

Approx. 40.3 sq. metres (433.9 sq. feet)



Total area: approx. 40.3 sq. metres (433.9 sq. feet)