



5, Elgar Drive

Shefford,
Bedfordshire, SG17 5RZ
£625,000

country
properties

This extended 4 bedroom detached home on the popular 'Composers' development certainly has the WOW Factor! The property is a credit to the current owners and boasts a separate home office/garden room, and is just a short stroll to the heart of Shefford, its amenities and highly regarded schooling.

- Stylish kitchen/dining/family room with peninsula island and bi-folding doors opening onto the rear garden
- Living room with feature contemporary gas fireplace
- Spacious utility room and ground floor cloakroom
- Main bedroom with en-suite shower room
- Air conditioning - installed in living room & main bedroom
- Private southerly aspect rear garden - a great space for entertaining and 'AlFRECO' dining
- Garage and driveway parking
- Just a short drive to Arlesey train station for rail links into London







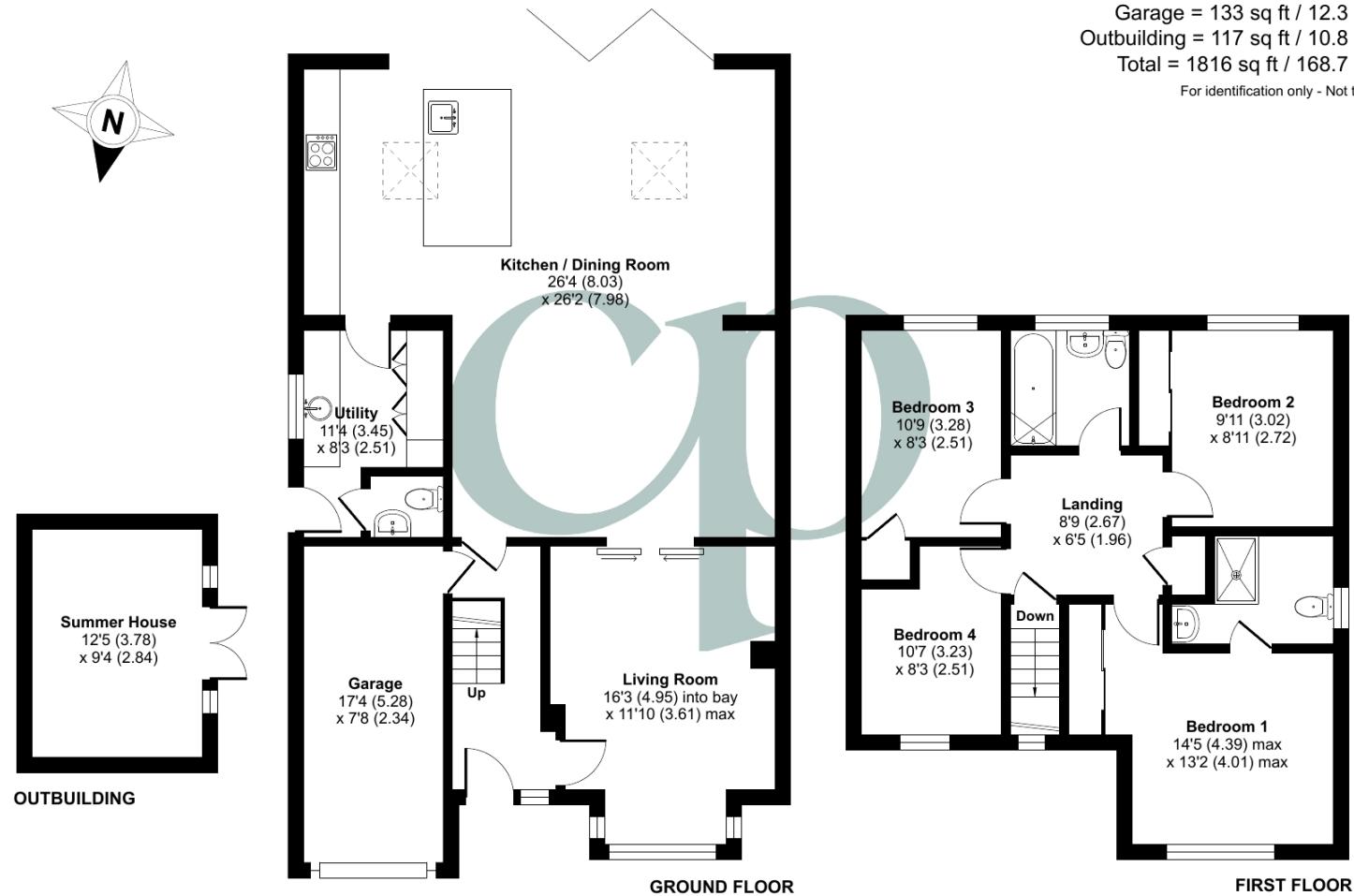
Approximate Area = 1566 sq ft / 145.5 sq m

Garage = 133 sq ft / 12.3 sq m

Outbuilding = 117 sq ft / 10.8 sq m

Total = 1816 sq ft / 168.7 sq m

For identification only - Not to scale



Floor plan produced in accordance with RICS Property Measurement Standards incorporating International Property Measurement Standards (IPMS2 Residential). © nichecom 2024. Produced for Country Properties. REF: 1111674

All measurements are approximate and quoted in metric with imperial equivalents and for general guidance only and whilst every attempt has been made to ensure accuracy, they must not be relied on. The fixtures, fittings and appliances referred to have not been tested and therefore no guarantee can be given and that they are in working order. Internal photographs are reproduced for general information and it must not be inferred that any item shown is included with the property. For a free

Viewing by appointment only

Country Properties | 46-48, High Street | SG17 5DG

T: 01462 811822 | E: shefford@country-properties.co.uk

www.country-properties.co.uk

country properties

country
properties