



Tempest Avenue, Potters Bar, Hertfordshire, EN6

£699,950

- **THREE DOUBLE BEDROOMS**
- **OFF STREET PARKING**
- **MODERN FITTED KITCHEN**
- **15 MINUTE WALK TO POTTERS BAR MAINLINE STATION**
- **SEMI DETACHED FAMILY HOME**
- **TWO RECEPTION ROOMS / OPEN PLAN**
- **DOWNSTAIRS TOILET**
- **CLOSE TO M25 AND A1(M)**

Tempest Avenue, Potters Bar, Hertfordshire, . EN6

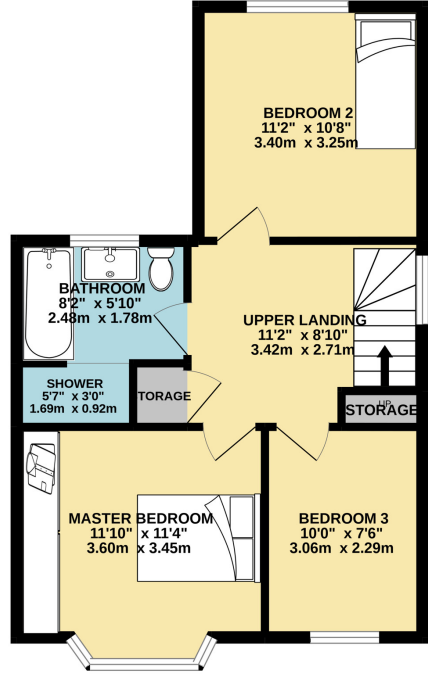
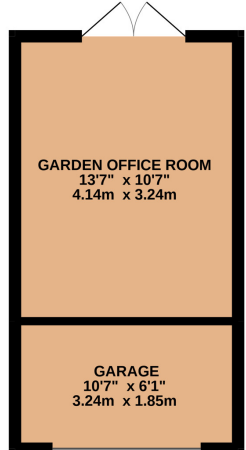
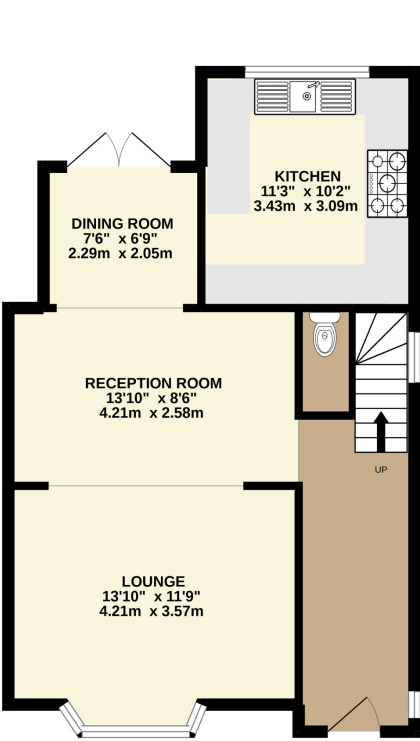
£699,950

This delightful three double bedroom semi detached home with the benefit of a double storey rear extension is ideally located within a short walk to Potters Bar High Street with its array of shops and restaurants, and moments from Oakmere Park with two fishing ponds and children's play area. The property benefits from a rear extension housing a modern fitted kitchen, dining room, plus two reception rooms and a downstairs guest toilet on the ground floor. The first floor consists of large landing, master bedroom to the front with fitted wardrobes, bathroom with bath and walk in shower and two further double bedrooms.

Externally the property benefits from a private rear garden with converted garage with office / garden room. Off street

GROUND FLOOR
754 sq.ft. (70.0 sq.m.) approx.

1ST FLOOR
492 sq.ft. (45.8 sq.m.) approx.



TOTAL FLOOR AREA : 1246 sq.ft. (115.8 sq.m.) approx.

Whilst every attempt has been made to ensure the accuracy of the floorplan contained here, measurements of doors, windows, rooms and any other items are approximate and no responsibility is taken for any error, omission or mis-statement. This plan is for illustrative purposes only and should be used as such by any prospective purchaser. The services, systems and appliances shown have not been tested and no guarantee as to their operability or efficiency can be given.
Made with Metropix ©2022

