

74 Banks Road, Coventry, West Midlands. CV6 1JR

£200,000 Freehold

FOR SALE



bayzos.

Bayzos Estate Agents
Fillongley, CV7 8DX

0330 124 6533
info@bayzos.co.uk

PROPERTY SUMMARY

No Upward Chain | Potential to Extend (STPP) | Recently Fitted Kitchen | Off-Road Parking | Loft; Insulated, Boarded, Ladder & Light | Large Corner Plot | Council Tax Band A | Approx. Internal Floor Area 83 Sq. M. | EPC Rating TBC

FEATURES

- EPC Rating TBC
- Approx. Internal Floor Area 83 Sq. M.
- Council Tax Band A
- Large Corner Plot
- Loft; Insulated, Boarded, Ladder & Light
- Off-Road Parking
- Recently Fitted Kitchen
- Potential to Extend (STPP)
- No Upward Chain



PROPERTY DESCRIPTION

Property Location

Banks Road is situated to the west side of the city and within easy reach of both the city centre and many popular local schools. Coundon Court and Christ the King are both within catchment. Local amenities can be found only a short walk away with many local shops and even Aldi found within close proximity.

Birmingham Airport and the NEC can be reached in less than twenty minutes and the popular town of Solihull is also only thirty minutes from the front door.

An ideal, quiet and convenient family location.

Sellers Comments

Selling only due to relocating to Scotland for early retirement.

ROOM DESCRIPTIONS

Room Measurements

Room dimensions and total floor areas are included within our floor plan

Additional Information*.....

Approx. Annual Gas: £480

Approx. Annual Electricity: £1450

Approx. Annual Water & Drainage: £700

Council Tax Band: A (£1460 p/a)

How Old is the Property: Approx. 1930s

How Long Have the Current Owners Lived at the Property: 10 years

Parking: 2 spaces for off road parking

Refurbishments: Kitchen

Loft: Insulated, boarded, ladder and light

Windows: Double glazed PVC

Heating System: Gas central heating

Boiler Location & Service: Kitchen cupboard & July 2022

Fireplace: Electric

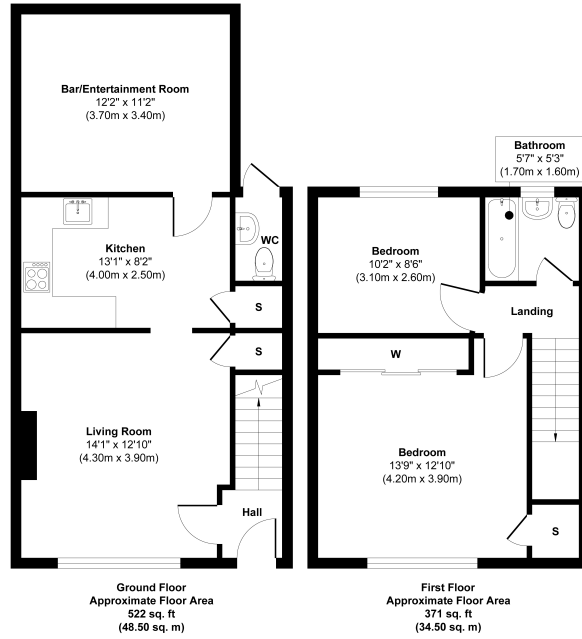
Fuse Box Location: Under the stairs

Garden Orientation: tbc

*Please verify these details through the conveyancing process



FLOORPLAN & EPC



Approx. Gross Internal Floor Area 893 sq. ft / 83.00 sq. m
Illustration for identification purposes only, measurements are approximate, not to scale.
Produced by Elements Property