

# THOMAS CONNOLLY

ESTATE AGENTS | LETTING AGENTS | NEW HOMES | PROPERTY MANAGEMENT

## 40 RAMBOUILLET DRIVE WHITEHOUSE MILTON KEYNES MK8 1GH

For Sale | Freehold | £425,000



1



3



2



C

### Contact us:

#### Phone:

01908 77 44 22

#### Email

Sales@tcmk.co.uk

#### Address

Thomas Connolly  
7 Rillaton Walk  
Brooklyn House  
MK9 2FZ



## Property Description

As you enter the property, you are greeted by a spacious entrance hall that leads to a separate kitchen and living room. The kitchen is modern and well-appointed with ample storage and worktop space, making it a perfect space for cooking and family meals. The living room is bright and airy, offering a comfortable space to relax.

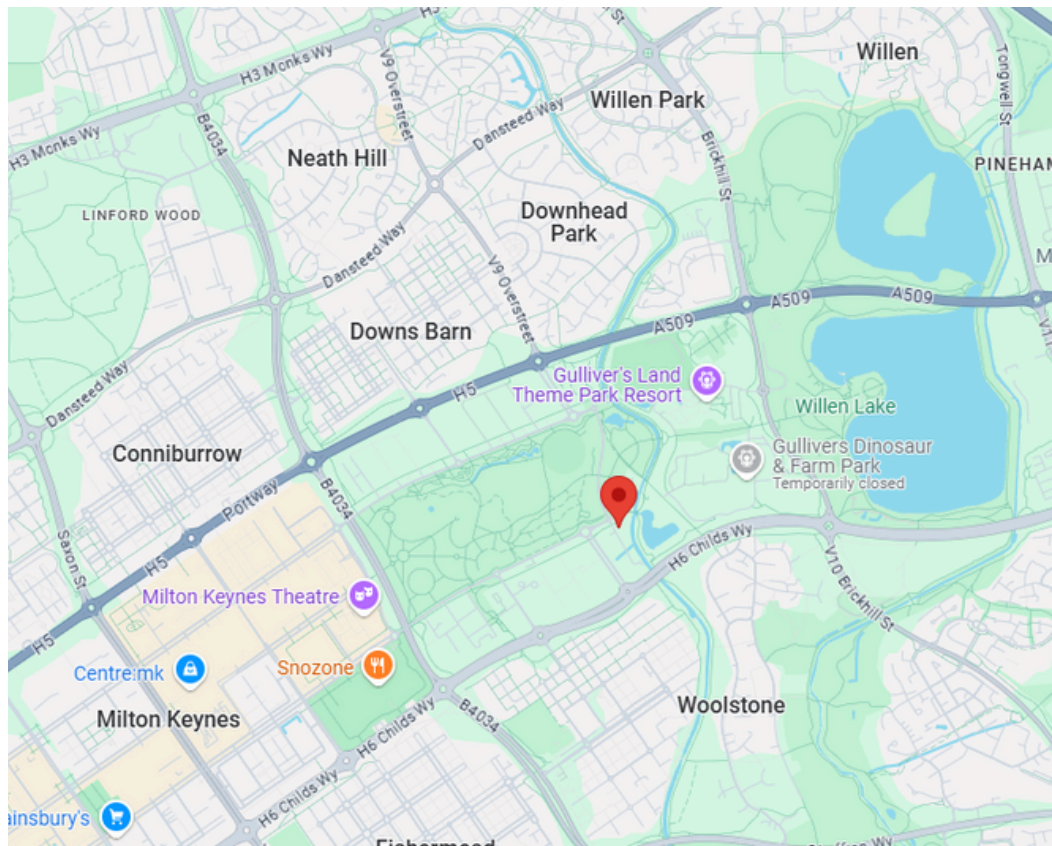
The ground floor further benefits from a convenient cloakroom. Upstairs, you'll find the family bathroom and three well-proportioned bedrooms. The master bedroom benefits from its own en-suite shower room, offering a private retreat.

Externally, the property features parking to the rear, providing off-road parking for two vehicles. The low-maintenance rear garden offers a blank canvas, ideal for outdoor enjoyment or personalisation.





# 40 Rambouillet Drive, Whitehouse, Milton Keynes, MK8 1GH



## Location

Whitehouse offers a range of local amenities, including parks, green spaces, and an on-site health centre complete with a doctor's surgery and chemist. Whitehouse Primary School and Watling Academy are both within a short walking distance, making it an ideal location for families. The area also offers excellent transport links, with easy access to the A5, M1, and just a short drive to Milton Keynes Central train station, making it perfect for commuters.



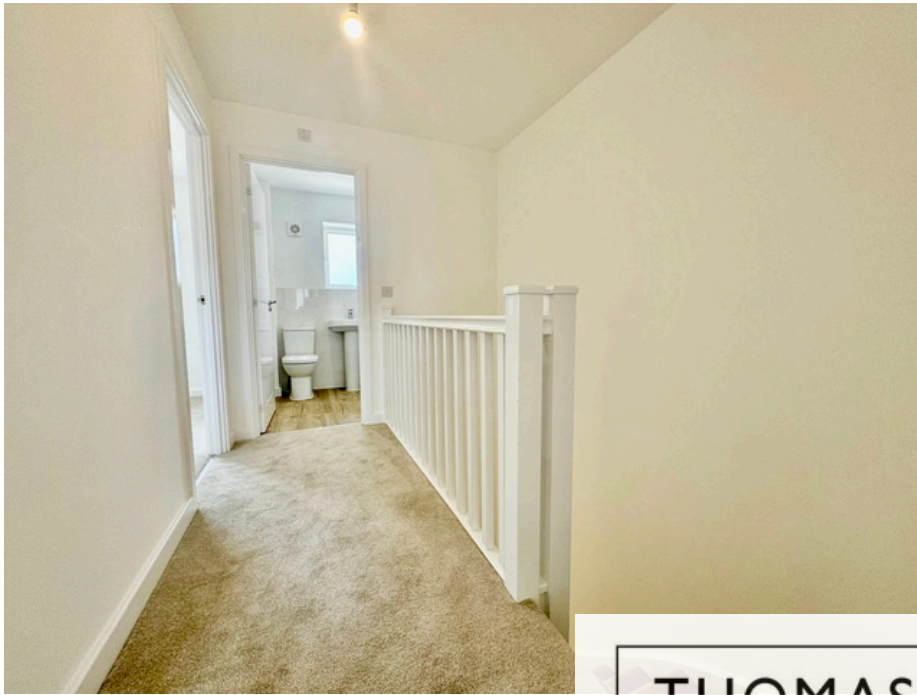
## THOMAS CONNOLLY ESTATE AGENTS

Estate Agents | Letting Agents | New Homes | Property Management

W: [Thomasconnolly.co.uk](http://Thomasconnolly.co.uk) | P: 01908 77 44 22 | E: [Sales@tcmk.co.uk](mailto:Sales@tcmk.co.uk)







**THOMAS CONNOLLY**

ESTATE AGENTS | LETTING AGENTS | NEW HOMES | PROPERTY MANAGEMENT





Room Descriptions:  
Kitchen 9'11" 15'10"  
Sitting Room 14'2" 16'3"  
Downstairs Cloakroom 2'9" 6'5"  
FIRST FLOOR  
Bedroom one 12'8" 9'  
En-suite to bedroom one 4'7"  
7'4"  
Bedroom two 8'10" 11'5"  
Bedroom three 8'9" 7'  
Family bathroom 6'5" 7'



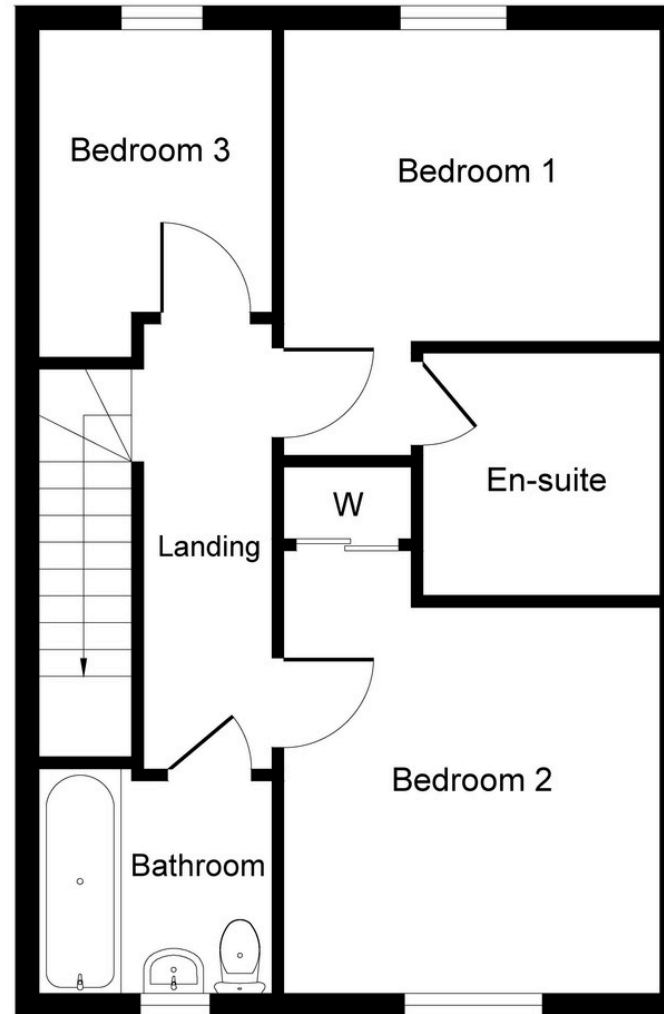


# THOMAS CONNOLLY

ESTATE AGENTS | LETTING AGENTS | NEW HOMES | PROPERTY MANAGEMENT



**Ground Floor**



**First Floor**

Whilst every attempt has been made to ensure the accuracy of the floor plan contained here, measurements of doors, windows, rooms and any other items are approximate and no responsibility is taken for any error, omission, or mis-statement. This plan is for illustrative purposes only and should be used as such by any prospective purchaser or tenant. The services, systems and appliances shown have not been tested and no guarantee as to their operability or efficiency can be given.

Copyright V360 Ltd 2023 | [www.houseviz.com](http://www.houseviz.com)