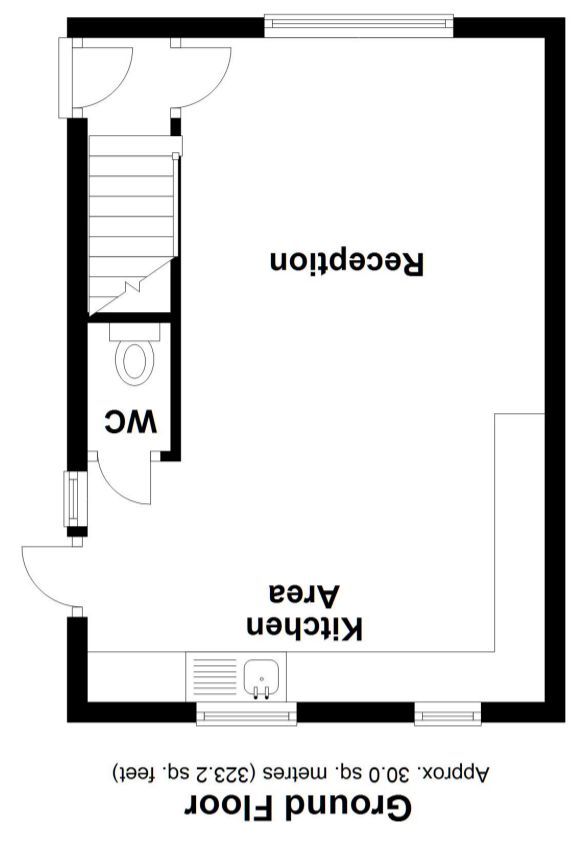
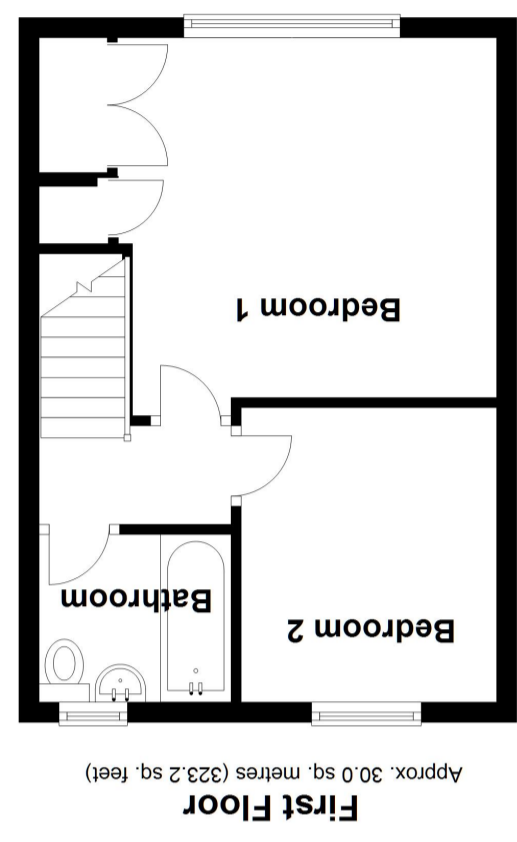
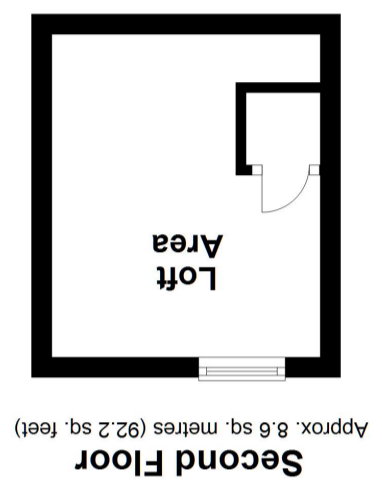


Total area: approx. 68.6 sq. metres (738.6 sq. feet)



50 Greatdown Road, London. W7 1JS.

A stunning example of a large end of terrace family home situated on the popular Cuckoo conservation area. The current owners have carried out extensive modernisation of the home over the years to provide a modern open plan family living space downstairs. The property has two large double bedroom and modern bathroom on the first floor and a loft area currently arranged as a sleeping area. Outside there is off street parking provided by a block paved driveway and to the rear a West facing landscaped garden with large patio area.

The property is located on the increasingly popular Cuckoo Conservation area. With a short walk to multiple bus routes and British Rail stations for direct access to Ealing Broadway and Paddington (and forthcoming Crossrail). Also close by are the many local shops, convenience supermarket and restaurants provided by the Greenford Avenue.

Family Room

21' 7" x 11' 10" (6.58m x 3.61m) Large bright room with double glazed window to the front and back, spot light and laminate floor, open plan with the kitchen and access to a cloakroom under the stairs and a door to the garden

Kitchen

Range of eye and base level modern units with stainless steel single drainer sink with gas hob with oven under and extractor hood over, plumbing and space for dishwasher and washing machine

Bedroom 1

12' 0" x 11' 11" (3.66m x 3.63m) Front aspect double glazed window, laminate floor, fitted

Bedroom 2

9' 6" x 8' 5" (2.90m x 2.57m) Rear aspect double glazed window, laminate floor, spot lights

Bathroom

Panel enclosed bath with shower attachment, low level WC, vanity wash hand basin, tiled walls and floor, spot lights, rear aspect double glazed frosted window

Loft Area

Rear aspect velux window, storage to eaves, fitted wardrobe, laminate floor

Garden

Mainly laid to lawn with flower and shrub borders, large patio area, covered area to the side with gate to the front, outside tap

