

FOR
SALE



21 Kingston Close, Worksop, Nottinghamshire S80 2UJ

£155,000 - Freehold



78, Bridge Street, Worksop, S80 1JA 01909 509001 info@bartropanddilks.co.uk

PROPERTY SUMMARY

Offered for sale with no chain being involved and set within this highly popular cul de sac, is this well presented three bedroom semi detached home that has gas central heating and uPVC double glazed windows. The property may be of interest for first time buyers and requires an early viewing. The accommodation comprises of; entrance porch, Inner hallway, lounge with fire surround and gas fire, well fitted dining kitchen. On the first floor; landing, three bedrooms, bedrooms one and two with fitted wardrobes, shower room with double walk in shower. Outside; gardens to the front and rear, the rear being a generous size with outhouses/W.C, rear workshop/garden shed. To the front is a driveway.

POINTS OF INTEREST

- *No Chain Involved*
- *Well Presented & Decorated*
- *Internal Inspection Advised*
- *Highly Sought After Area*
- *Three Bedroom*
- *Semi Detached*
- *GFCH and uPVC DG*
- *Driveway*
- *Generous Established Gardens*
- *Of Interest FTB's*



ROOM DESCRIPTIONS

Ground Floor

Entrance Porch

With entrance door, door leading to the hallway.

Hallway

With stairs to the first floor, storage, side facing window, central heating radiator.

Lounge 4.38m x 3.87m (14' 4" x 12' 8")

With a fire surround and gas fire, central heating radiator, front facing window.

Dining Kitchen 6.40m x 3.20m (21' 0" x 10' 6")

With a good range of fitted wall and base units, worksurfaces, sink unit with mixer tap, rear window and door to the garden, plumbing for an automatic washing machine, central heating radiator, fire surround and electric fire, cooker space.

First Floor

Landing

With a side facing window, loft access with loft ladder and boarding.

Bedroom One 3.91m x 2.97m (12' 10" x 9' 9")

With a range of fitted wardrobes, front facing window, central heating radiator.

Bedroom Two 3.88m x 3.19m (12' 9" x 10' 6")

With fitted wardrobes to one wall, one housing the wall mounted gas fired central heating boiler, rear facing window, central heating radiator.

Bedroom Three 2.90m x 2.72m (9' 6" x 8' 11")

With a fitted wardrobe/storage, front facing window, central heating radiator.

Shower Room

With a double walk in shower, low flush w.c, wash hand basin, central heating radiator, tiling, rear facing window, central heating radiator.

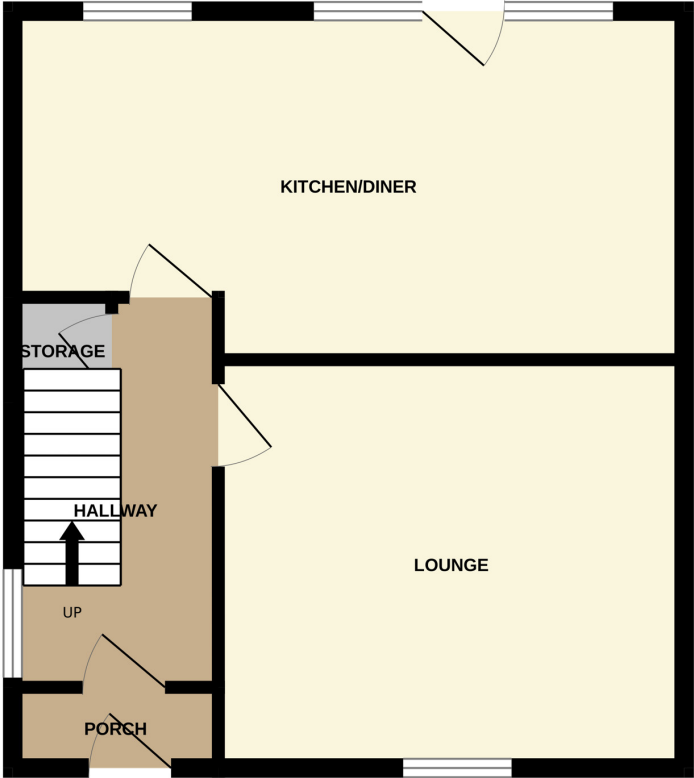
Outside

Gardens

Front and rear established gardens, Both mainly laid to the lawn with shrubbery. The rear with extensive patio, two outbuildings, outside W.C. The rear of the garden has garden shed/workshop.

Driveway

GROUND FLOOR



1ST FLOOR

