



9 Whittle Court,  
Knowlhill, Milton Keynes, MK5 8FT

Tel: 01908 231 551 

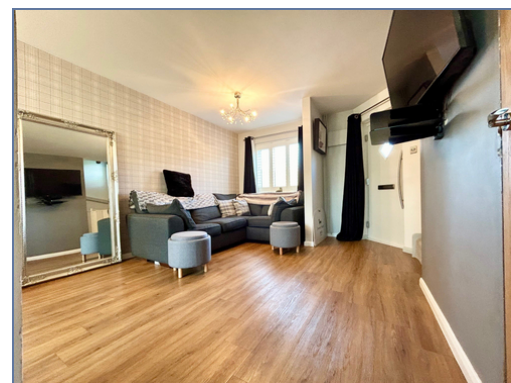
mail@elevationstateagents.com



**140 Lichfield Down, Walnut Tree, Milton  
Keynes, Buckinghamshire, MK7 7DN**

**£155,000 Freehold**

- £5,000 Premium
- Two double bedroom
- Garden and extension
- Renovated throughout
- Low rent
- Desirable and highly sought-after location
- Parking
- 50% shared ownership
- EPC Rating



See our full selection of properties online at [www.elevationstateagents.com](http://www.elevationstateagents.com)





We are pleased to present an exceptional Terraced located at Lichfield Down, Milton Keynes, MK7. This wonderful residence boasts 2 bedrooms, 1 bathroom, and 1 living room, offering ample space for comfortable living. Additionally, it features a fully fitted kitchen, ideal for culinary enthusiasts, along with the convenience of a Rear Garden and off-street parking. Positioned in a prime location, this property offers easy access to a range of local amenities and public transportation, ensuring convenience for residents. Its proximity to esteemed schools and a college enhances its appeal, providing families with access to excellent educational opportunities. This residence embodies the perfect blend of comfort, convenience, and quality living, making it an ideal choice for discerning individuals or families seeking a place to call home. 2-bed mid-terrace in a good school catchment area. Conservatory. Blinds fitted throughout New bathroom. New boiler. Monthly rent £207.45 Monthly service charge £22.08 Tenure: Leasehold, 87 years remaining

## Disclaimer

Whilst we have endeavoured to prepare our sales particulars accurately none of the services, appliances or equipment have been tested. A buyer should satisfy themselves on such matters prior to purchase. Any measurements or distances mentioned in these particulars are for guide reference only. If such particulars are fundamental to a purchase, buyers should rely on their own enquiries. All enquiries should be directed to Elevation Estate Agents in the first instance.