

3 Bedroom(s), Detached Bungalow, Freehold

Harvey Close, Finningley, Doncaster.



- 3D Virtual Tour Available
- Well Presented Throughout
- Family Bathroom
- Modern Kitchen
- Spacious Frontage, Driveway and Garage

- Three Bedroom Detached Bungalow
- Lounge Diner
- Sun Room
- Popular Location
- Rear Enclosed Garden

£285,950
For Sale

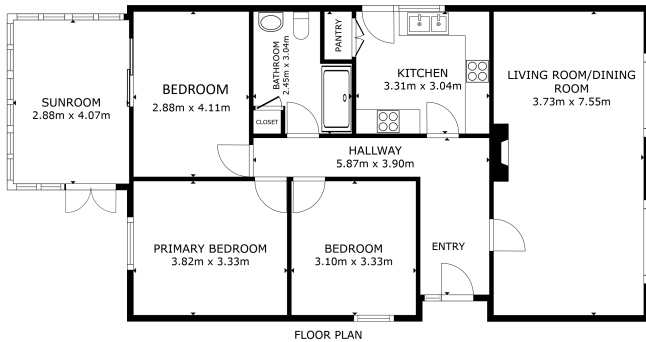
Book your viewing today Tel: 01302 247754

Owner's View

Nestled in the sought-after village of Finningley, Doncaster, this spacious three-bedroom detached bungalow on Harvey Close offers comfortable, single-level living in a quiet residential cul-de-sac. Boasting a well-maintained front garden, a driveway providing ample off-road parking, and a garage, the property also features a generous rear enclosed garden, perfect for outdoor relaxation. Inside, the home comprises a bright and airy lounge diner, a well-equipped kitchen, and a sun room overlooking the garden – ideal for enjoying natural light all year round. There are three good-sized bedrooms, along with a modern family bathroom finished to a high standard. This attractive bungalow combines practical layout with peaceful surroundings, making it an ideal choice for a range of buyers. Early viewing is highly recommended.

Internals

Floor Plan



GROSS INTERNAL AREA
FLOOR PLAN ONLY (HAP)
TOTAL: 106.9 sqm
SIZES AND DIMENSIONS ARE APPROXIMATE, ACTUAL MAY VARY

Matterport

Kitchen



Lounge Diner



Sun Room





Master Bedroom



Bedroom



Bedroom



Bathroom



Externals

Front Aspect



Rear Garden



Property Information

Council Tax Band - C

Utilities - Mains Gas, Mains Electricity, Mains Water

Water Meter - Yes

Tenure - Freehold

Solar Panels - No

Space Heating System - Gas Boiler with radiators



Approximate Heating System Installation Date -

Water Heating System - Gas boiler (Combi)

Approximate Water Heating Installation Date -

Boiler Location - BATHROOM

Approximate Electrical System Installation Date -

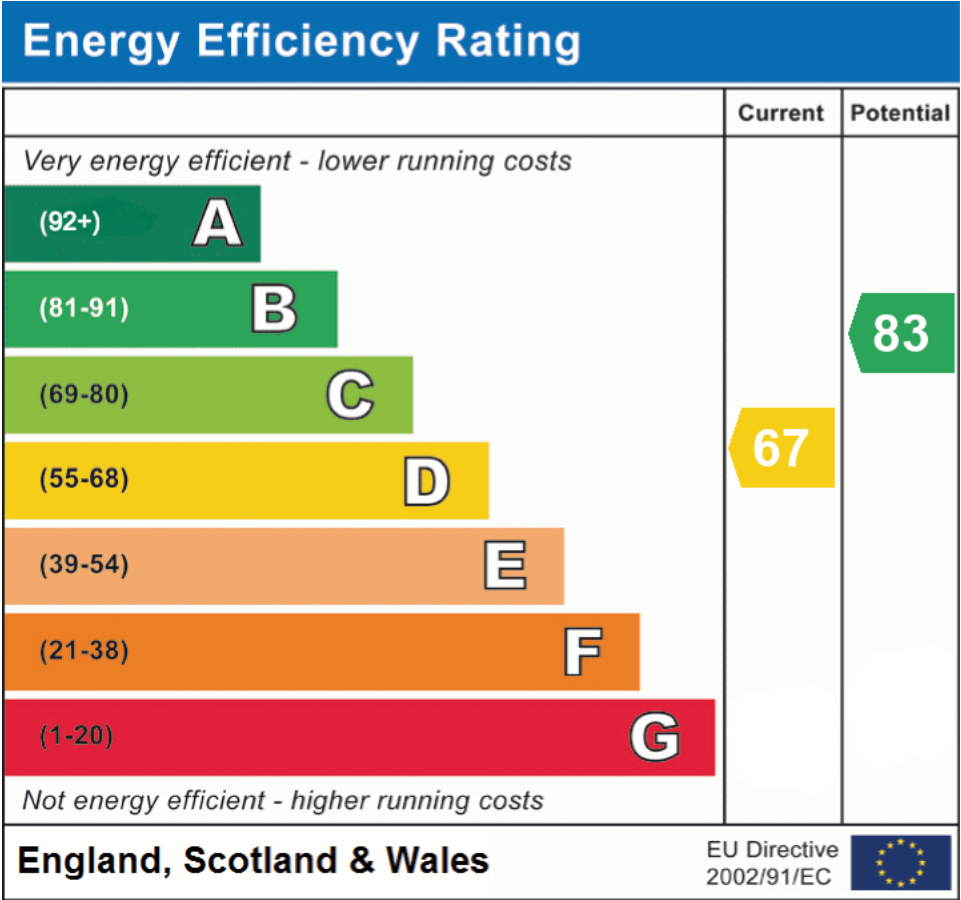
Permanent Loft Ladder - Yes

Loft Insulation - Yes

Loft Boarded out – Yes

Whilst every effort is made to ensure that the information contained in these particulars is reliable, they do not constitute or form part of an offer or any contract. The Property Hive accept no liability for the accuracy of the contents, and therefore they should be independently verified by prospective buyers or tenants before agreeing an offer. All measurements provided are approximate and should be verified before exchange of contracts. No appliances, fixtures or fittings have been tested and should be checked by the buyer before exchange of contracts to ensure they are in good working order.

Energy Performance Certificate



All measurements provided are approximate and should be verified before exchange of contracts. No appliances have been tested and should be checked to ensure they are in good working order.