



HILTON KING & LOCKE

SPECIALISTS IN PROPERTY



75 Thorney Mill Road, Iver, Buckinghamshire. SL0 9AH.

£775,000 Freehold

Hilton King & Locke are pleased to bring to the market this four-bedroom extended semi-detached family home that boasts 2,403 sq ft. This property also comes to the market with no chain!

This remarkable house offers a harmonious blend of spacious interiors and lush outdoor spaces. With a myriad of impressive features, this property redefines comfortable living. Upon entering the property that is set back from the road you are greeted by ample parking spaces for multiple cars, providing convenience for both residents and guests. This property also benefits from side access to the well-maintained garden.

The abundance of natural light creates an inviting ambiance that seamlessly connects the various parts of the house. Step inside to discover the generous layout, featuring two elegantly designed reception rooms that provide a versatile space for relaxation and entertainment. A unique feature of this property is the flexible outbuilding/home office. Practicality is evident throughout, with plenty of storage options to keep the living areas clutter-free.

The well-appointed kitchen boasts plenty of space for free standing appliances and connects seamlessly to sitting and dining room, catering to modern convenience and functionality providing access to outside.

Leading up to the first floor you have four double bedrooms and a family bathroom with two of the bedrooms benefiting from ensuite shower rooms and fitted wardrobes. The fully tiled family bathroom completes the upstairs.

The outdoor area is the perfect space to relax and is low maintenance with a lawned area and patio providing space for garden furniture. The outbuilding adds to the property's allure and is an added benefit to this property's potential for diverse uses.

In conclusion, this family house offers an extraordinary opportunity to embrace spacious living, versatile spaces, and a harmonious connection with nature. Its combination of functional design and exquisite features make it a property that stands out in every aspect.

#### THE AREA





This property is well placed and set back from Thorney Mill Road while also being very close to Thorney Park Golf Course, a petrol Station plus offering quick access to Heathrow, the M4 and the motorway network. Situated near the Richings Park border, an excellent location which is also walking distance to Iver Station and the Crossrail service, plus West Drayton Station and its High Street with many amenities. Central London is also easily accessible by road via the M40, A40, M4 and M25 and Heathrow Airport is situated only 5 miles away. The areas surrounding Iver have an excellent choice of state and independent schools. The area is well served for sporting facilities and the countryside, including Black Park and Langley Park. The larger centres of Gerrards Cross and Uxbridge are also close by where there are a large selection of shops, supermarkets, restaurants, and entertainment facilities including a multiplex cinema.



#### Important Notice

Particulars: These particulars are not an offer or contract, nor part of one. You should not rely on statements by Hilton King & Locke Ltd in the particulars or by word of mouth or in writing as being factually accurate about the property, its condition or its value. Hilton King & Locke Ltd does not have any authority to make any representations about the property, and accordingly any information given is entirely without responsibility on the part of the agents, seller(s) or lessor(s).

Photographs etc: The photographs show only certain parts of the property as they appeared at the time they were taken. Areas, measurements and distances given are approximate only.



23 High Street  
Iver Buckinghamshire SL0 9ND

Tel: 01753 650033  
iver@hklhome.co.uk

# 75, Thorney Mill Road

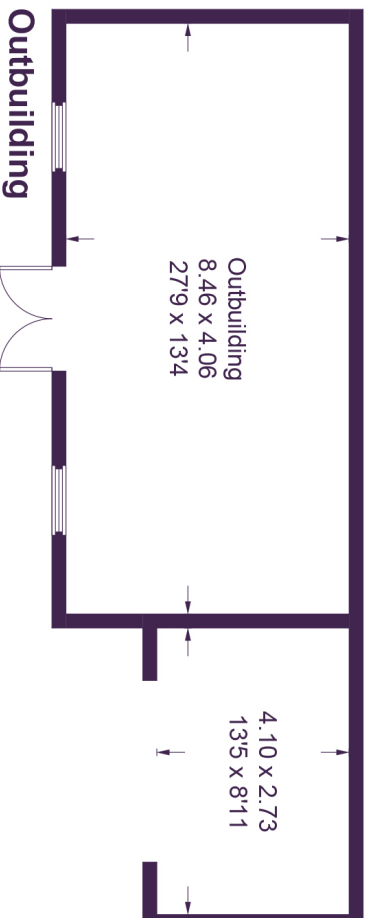
Approximate Gross Internal Area

Ground Floor = 94.0 sq m / 1,012 sq ft

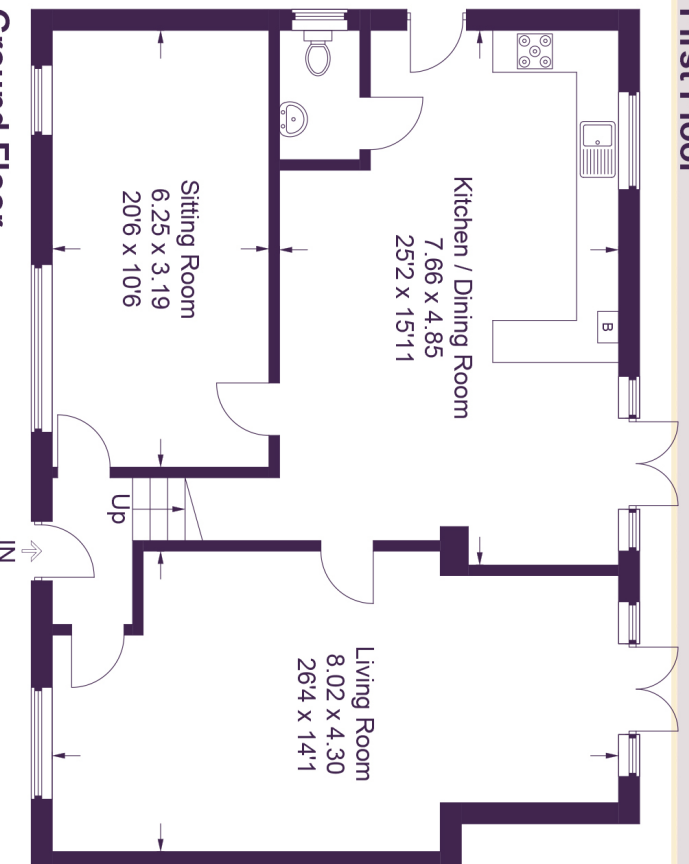
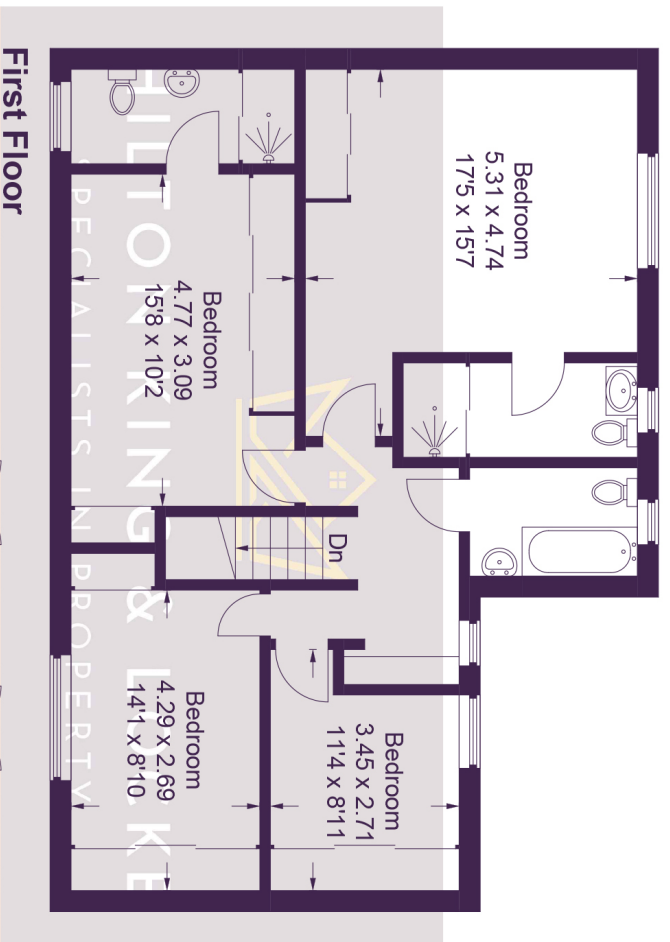
First Floor = 83.7 sq m / 901 sq ft

Outbuilding = 45.5 sq m / 490 sq ft

Total = 223.2 sq m / 2,403 sq ft



**Outbuilding**  
(Not Shown In Actual Location / Orientation)



This plan is for layout guidance only. Not drawn to scale unless stated. Windows and door openings are approximate. Whilst every care is taken in the preparation of this plan, please check all dimensions, shapes and compass bearings before making any decisions reliant upon them.