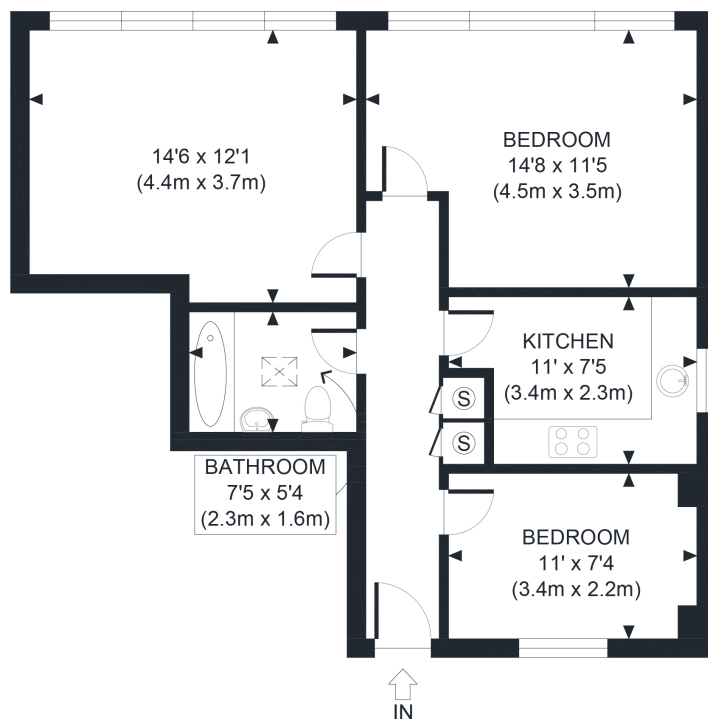




Sandwell Crescent, London, NW6

£2,200 pcm

- Two Bedroom Apartment
- Bright & Airy Throughout
- Gas Central Heating
- Unfurnished
- Modern Finish Throughout
- Wood Floors
- Close to Amenities & Transport Links of West Hampstead
- Available 12th October 2023



SECOND FLOOR
GROSS INTERNAL
FLOOR AREA 612 SQ FT

APPROX. GROSS INTERNAL FLOOR AREA 612 SQ FT / 57 SQM

Disclaimer: Floor plan measurements are approximate and are for illustrative purposes only. While we do not doubt the floor plan accuracy and completeness, you or your advisors should conduct a careful, independent investigation of the property in respect of monetary valuation

Copyright **photoplan360**

