

3 Bedroom(s), Semi-Detached House,

Buckingham Road, Town Moor, South



- 3D Virtual Tour Available
- Three Bedroom Semi Detached Home
- Lounge
- Family Bathroom
- Popular Location

- No Chain
- Kitchen Diner
- Driveway and Garage
- Local Amenities, Schools and Transport Links
- Rear Enclosed Garden

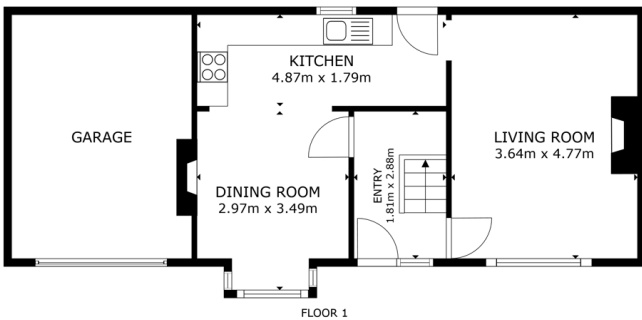
£185,000
For Sale

Book your viewing today Tel: 01302 247754

Owner's View

Situated on the sought-after Buckingham Road in Town Moor, Doncaster, this well-presented three-bedroom semi-detached home offers an ideal setting for families or first-time buyers. The property boasts a spacious lounge and a modern kitchen diner, perfect for everyday living and entertaining. Upstairs, you'll find three well-proportioned bedrooms and a family bathroom. Outside, the home benefits from a driveway and garage, providing ample off-road parking, along with a private enclosed rear garden—ideal for children, pets, or relaxing in the warmer months. Located in a popular residential area, close to local amenities, reputable schools, and excellent transport links, this is a fantastic opportunity to secure a family home in a prime Doncaster location. Early viewing is recommended!

Floor Plan



GROSS INTERNAL AREA
FLOOR 1: 42.2 sq m FLOOR 2: 45.0 sq m
ENCLOSURE AREA: GARAGE: 16.8 sq m
TOTAL: 83.5 sq m
SIZES AND DIMENSIONS ARE APPROXIMATE, ACTUAL MAY VARY.

Matterport

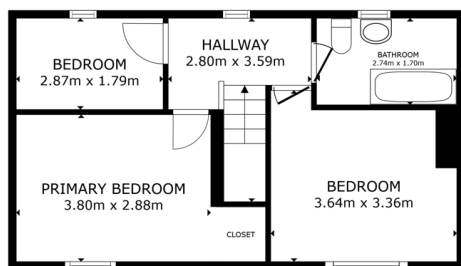


Lounge



First Floor

Floor Plan



GROSS INTERNAL AREA
FLOOR 1: 42.5 m² FLOOR 2: 45.0 m²
EXCLUDED AREAS: GARAGE 16.8 m²
TOTAL: 88.3 m²
SIZES AND DIMENSIONS ARE APPROXIMATE, ACTUAL MAY VARY



Master Bedroom



Bedroom



Bedroom



Family Bathroom



Externals

Front Aspect



Rear Garden



Property Information

Council Tax Band - B

Utilities - Mains Gas, Mains Electricity, Mains Water

Water Meter - Yes

Tenure - Freehold

Solar Panels - No

Space Heating System - Gas Boiler with radiators

Approximate Heating System Installation Date -

Water Heating System - Gas boiler (Combi)

Approximate Water Heating Installation Date -

Boiler Location - 2nd bedroom

Approximate Electrical System Installation Date - approx 2022

Permanent Loft Ladder - No

Loft Insulation - Yes

Loft Boarded out - No

Whilst every effort is made to ensure that the information contained in these particulars is reliable, they do not constitute or form part of an offer or any contract. The Property Hive accept no liability for the accuracy of the contents, and therefore they should be independently verified by prospective buyers or tenants before agreeing an offer. All measurements provided are approximate and should be verified before exchange of contracts. No appliances, fixtures or fittings have been tested and should be checked by the buyer before exchange of contracts to ensure they are in good working order.



We make it happen.

Tel: 01302 247754

Email: info@thepropertyhive.co.uk

Web: www.thepropertyhive.co.uk

Energy Performance Certificate