



## Harrison Close

Harrison Court | Hitchin | Hertfordshire | SG4 9SG

[www.stonegate-estates.co.uk](http://www.stonegate-estates.co.uk)



# HARRISON CLOSE

## Property Description

A lovely redecorated two bedroom ground floor retirement apartment situated within the Harrison Court development.

Being located within the town centre and being a short walk from the train station, this apartment has numerous benefits with good sized accommodation and its own enclosed balcony area being particular highlights.

There is a refitted shower room and a generous sized kitchen along with built in storage cupboards. There are two double bedrooms and an open kitchen living room with double doors leading to the balcony area.

The Lease has been extended and now offers a length of approximately 125 years.

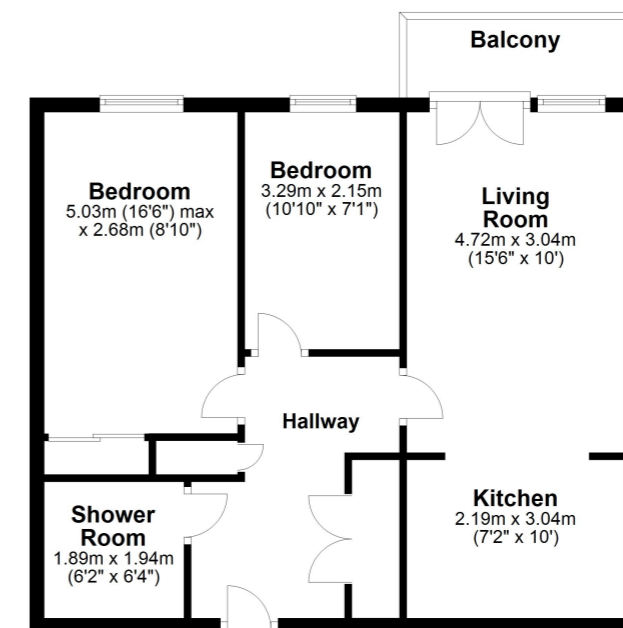
Hitchin town provides a broad range of shops and a regular traditional market, together with a good selection of restaurants, bars and pubs within its historic centre. The town also provides a swimming centre, theatres and a library, whilst the commuter is served by the main line railway station (Kings Cross - 30 minutes) and direct links to the A1(M).

**£279,950 Leasehold**





**Floor Plan**  
Approx. 56.7 sq. metres (610.0 sq. feet)



Total area: approx. 56.7 sq. metres (610.0 sq. feet)

All measurements shown are approximate and for guidance only. Garages and workshops are not included in any gross floor areas unless integral to the main building where they will be included.  
Plan produced using PlanUp.



- Two Bedroom Retirement Apartment
- Town Centre Location
- Ground Floor
- Balcony
- Redecorated
- Extended Lease
- Shower Room
- Spacious Accommodation
- Residents Lounge

EPC Rating:

Stonegate Estate Agents

01462 438979

[sales@stonegate-estates.co.uk](mailto:sales@stonegate-estates.co.uk) | [www.stonegate-estates.co.uk](http://www.stonegate-estates.co.uk)

