

# Woodforde Green

Castle Cary, BA7 7LD

COOPER  
AND  
TANNER



## £310,000 Freehold

An extended three-bedroom semi-detached house overlooking views of Fairfield Park with no onward chain, parking and single garage

# Woodforde Green Castle Cary BA7 7LD

 3  1  1 EPC C

## £310,000 Freehold

### DESCRIPTION

Set in the desirable and well-established area of Woodford Green in the charming market town of Castle Cary is this extended three-bedroom semi-detached property presenting an exceptional opportunity for buyers looking to create their ideal home. With no onward chain, this property is a blank canvas, ready to be transformed to suit your personal tastes and lifestyle.

Positioned in a peaceful residential setting, this home boasts lovely open views overlooking Fairfield Park, making it perfect for families, professionals, or downsizers looking for sought after location with easy access to green space. The front and rear gardens enhance the outdoor appeal, providing ample space for gardening, entertaining, or simply enjoying the view.

Inside, the property has been tastefully maintained with neutral décor throughout, allowing new owners to move in immediately or update and personalise over time. The highlight of this home is the extended ground floor space, which creates a bright and spacious open-plan living and dining area, ideal for modern family living.

Externally, the home benefits from both front and rear access. A single garage is located in a nearby block, providing secure parking or additional storage options.

With its sought-after location, uninterrupted park views, and fantastic potential, don't miss this opportunity to make Woodford Green your next home.

### LOCATION

Located within walking distance to local transport links, residents can enjoy easy access to the town's boutique shops, cafes, well-regarded schools, and train station offering direct services to London Paddington.

### COUNCIL TAX BAND

C

### TENURE

Freehold









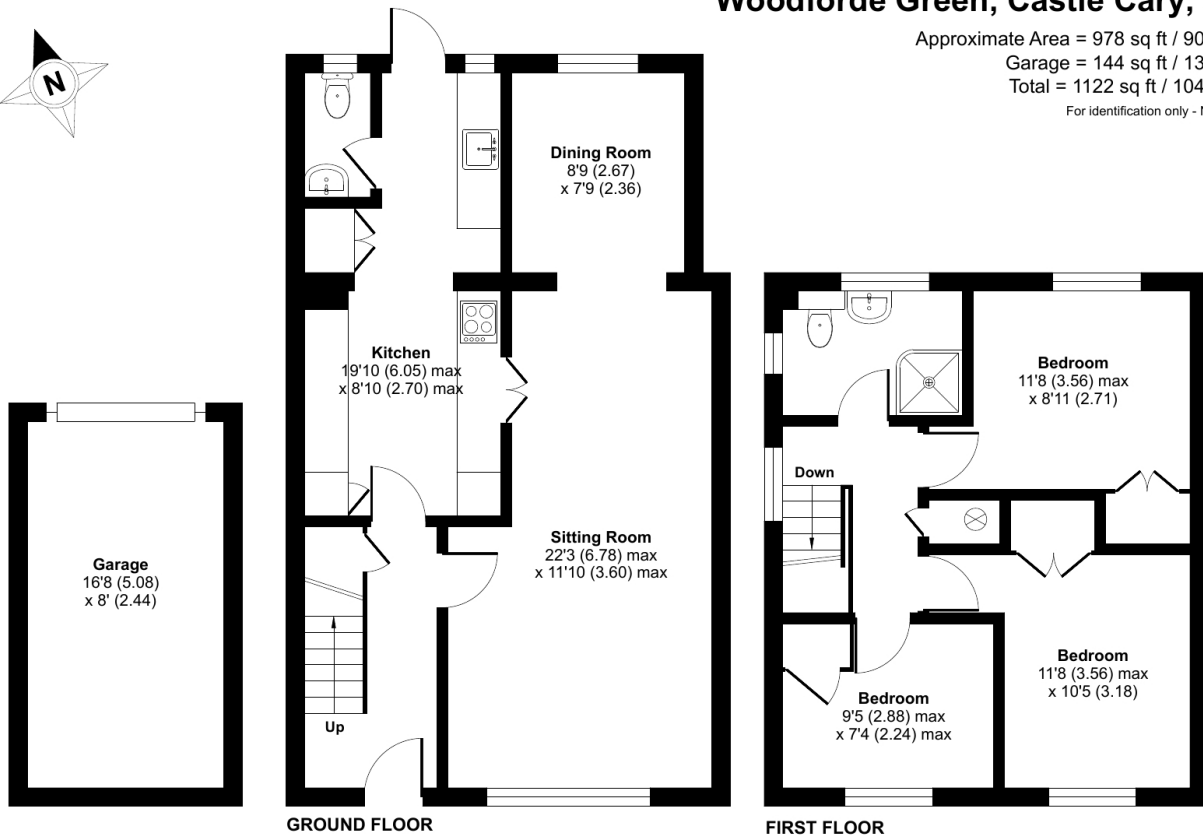
## Woodforde Green, Castle Cary, BA7

Approximate Area = 978 sq ft / 90.8 sq m

Garage = 144 sq ft / 13.3 sq m

Total = 1122 sq ft / 104.1 sq m

For identification only - Not to scale



Floor plan produced in accordance with RICS Property Measurement 2nd Edition, Incorporating International Property Measurement Standards (IPMS2 Residential). © nitchecom 2025. Produced for Cooper and Tanner. REF: 1279099

### CASTLE CARY OFFICE

Telephone 01963 350327

Fore Street, Castle Cary, Somerset BA7 7BG

[castlecary@cooperandtanner.co.uk](mailto:castlecary@cooperandtanner.co.uk)

**COOPER  
AND  
TANNER**

Important Notice: These particulars are set out as a general outline only for the guidance of intended purchasers and do not constitute, nor constitute part of, an offer or contract. All descriptions, dimensions, reference to condition and necessary permissions for use and occupation, warranties and other details are given without responsibility and any intending purchasers should not rely on the map as statements or representations of fact but must satisfy themselves by inspection or otherwise as to the correctness of each of them.

