

FOR SALE

Estate agents since 1979

£579,950

Rydal Crescent, Perivale, Greenford, Greater London. UB6



Peter Gamble & Co. offer to the market this spacious 3 BEDROOM, 1 BATHROOM SEMI-DETACHED HOME.

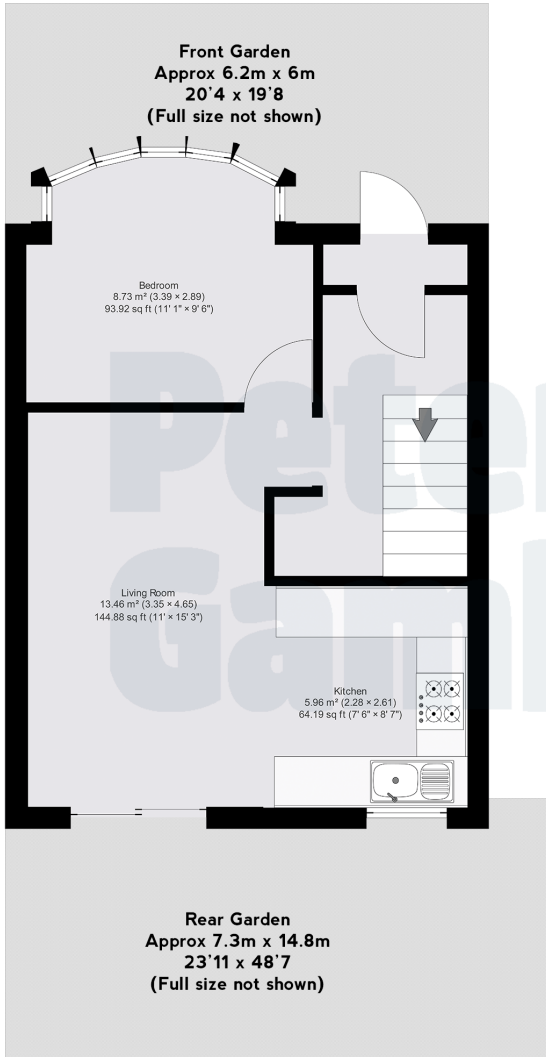
Situated on this quiet residential crescent positioned perfectly for easy access to the A40, Perivale or Hanger Lane tube stations are both walk-able and Tesco Hoover Building is just at the end of the road.

To the ground floor is a separate front reception, large rear kitchen diner. Garden with patio, lawn and a big brick built garage.

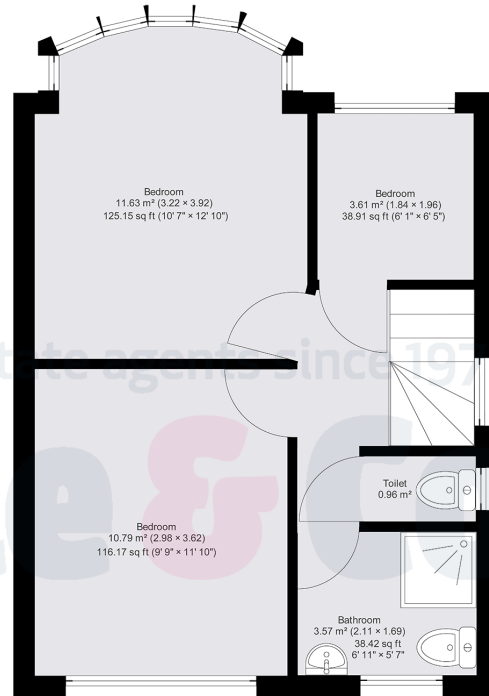
To the first floor are the 3 bedrooms and family bathroom.







Rydal Crescent



APPROX. GROSS INTERNAL FLOOR AREA: 73.7 sq. m / 793 sq.ft

WHILST EVERY ATTEMPT HAS BEEN MADE TO ENSURE THE ACCURACY OF THE FLOOR PLAN CONTAINED HERE,
 NO RESPONSIBILITY IS TAKEN FOR ANY ERROR, OMISSION OR MIS-STATEMENT. THIS PLAN IS FOR ILLUSTRATIVE
 PURPOSES ONLY AND SHOULD BE USED AS SUCH

© Avasmo Energy