



Kingsoak
Hitchin | SG4 7BF

FINE & COUNTRY



Step inside

Kingsoak

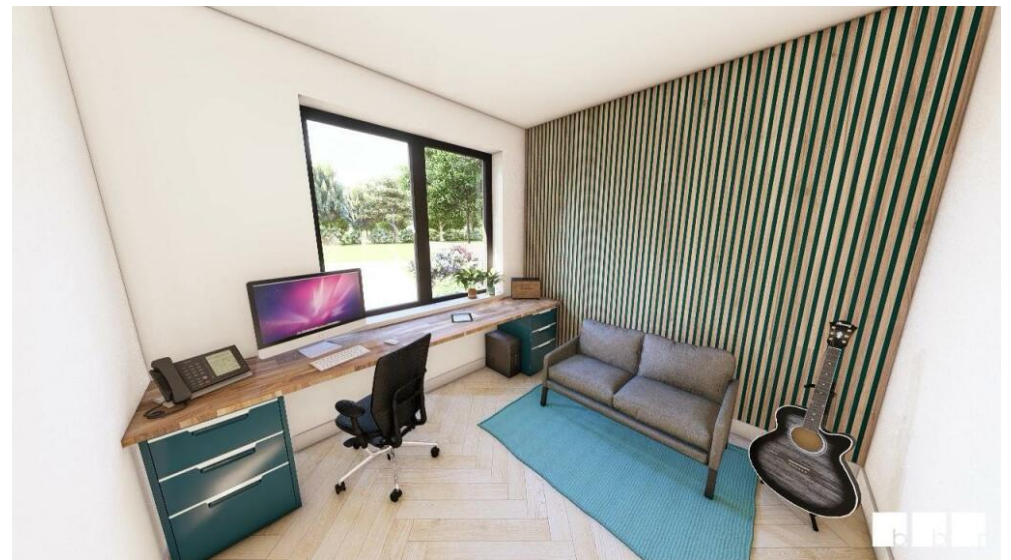
Nestled in the tranquil and picturesque setting of Kingsoak, Hitchin, Oak View House is an exceptional four-bedroom detached home that offers the perfect fusion of modern living and countryside charm. It has been designed to offer a high standard of comfort and elegance, making it the ideal choice for those seeking both space and serenity.

As you enter, you're immediately welcomed by a striking vaulted hallway, creating a sense of openness and grandeur. The spacious living room provides an inviting area for relaxation, while the expansive open-plan kitchen and dining room offers a perfect space for entertaining guests or enjoying meals with family. A separate study provides the ideal setting for work or quiet time away from the main living areas. For added convenience, a well-sized utility room is located just off the kitchen, offering practical storage and space for laundry.

The home features four generously sized bedrooms, with two of them benefiting from their own private en-suite bathrooms, providing a luxurious retreat for the homeowners. In addition, a large family bathroom is located on the first floor, designed to cater to the needs of the remaining bedrooms, offering ample space and modern fixtures for family living.

The true highlight however, is its secluded position at the end of a private road, surrounded by picturesque countryside. This unique location offers the perfect blend of privacy, peace, and natural beauty, while still being within easy reach of local amenities and transport links.

Ideal for those looking to embrace a modern, comfortable lifestyle in a truly peaceful setting, Oak View House is a rare opportunity not to be missed.









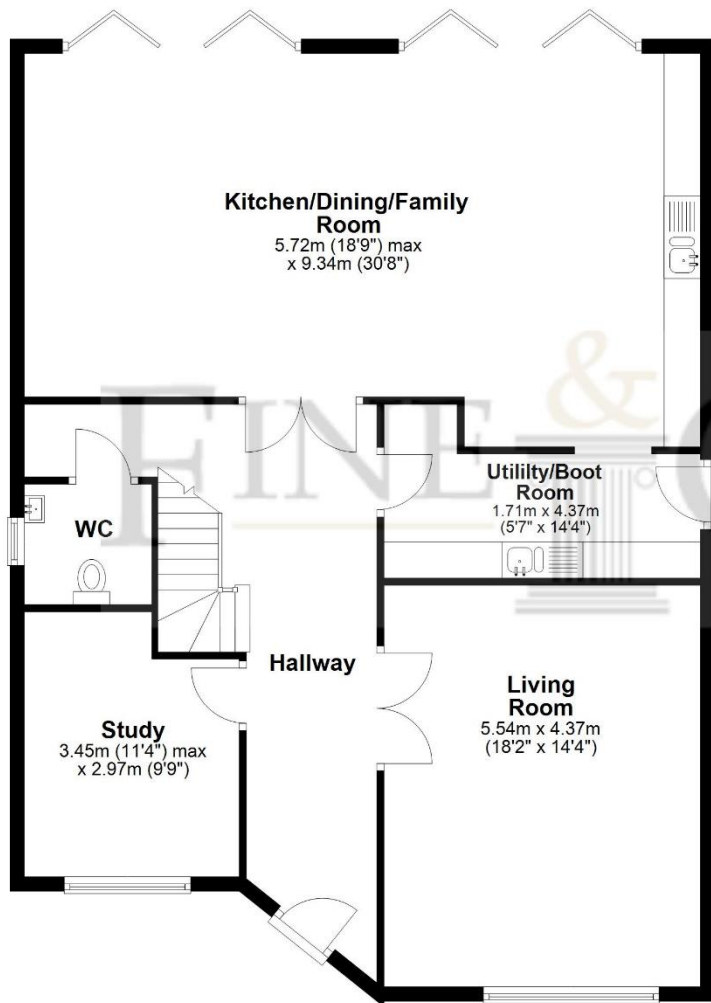
Step outside

Kingsoak

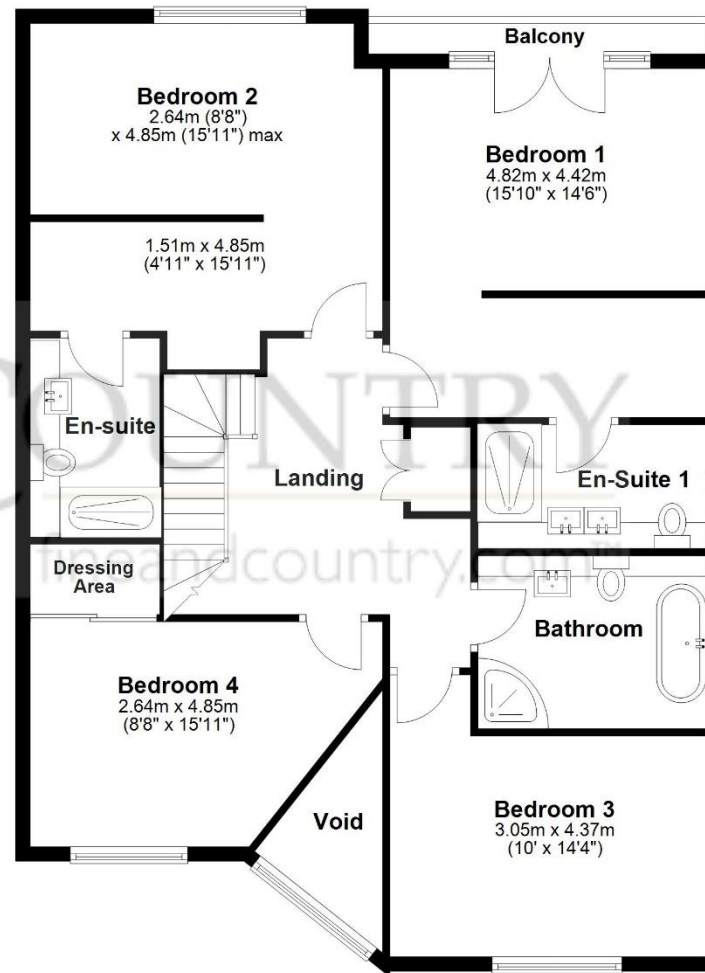
Oak View House is set in a highly sought-after location, with views overlooking the expansive playing fields of the prestigious independent Kingshott School, offering a sense of space and tranquility. The development is also within the catchment areas for some of the region's most highly regarded schools, including the "Outstanding" rated William Ransom Primary School, and the well-regarded Hitchin Boys' and Girls' Schools for secondary education. The property boasts a large, private patio area at the rear, providing the perfect space for outdoor living. Whether you're hosting summer barbecues, dining al fresco, or simply enjoying the natural surroundings. The garden complements the outdoor space, creating a seamless connection between the interior and exterior, ideal for making the most of the peaceful setting. The home is complemented by a landscaped front garden, with space for two cars.



Ground Floor



First Floor



For illustrative purposes only - NOT TO SCALE - Measurements shows are approximate. The size and position of doors, windows, appliances and other features are approximate.
Plan produced using PlanUp.



Agents notes: All measurements are approximate and for general guidance only and whilst every attempt has been made to ensure accuracy, they must not be relied on. The fixtures, fittings and appliances referred to have not been tested and therefore no guarantee can be given that they are in working order. Internal photographs are reproduced for general information and it must not be inferred that any item shown is included with the property. For a free valuation, contact the numbers listed on the brochure.



Fine & Country

Tel: +44(0) 1462 222555

northherts@fineandcountry.com

Station Place, Letchworth Garden City, Hertfordshire SG6 3AQ

