

FOR
SALE



Jasmin Road, West Ewell KT19 9EA

£360,000 - Leasehold



252, Chessington Road, Ewell, Epsom, KT19 9XF [0208 394 2555](tel:02083942555) sales@jacksonnoon.com

PROPERTY SUMMARY

JACKSON NOON ESTATE AGENTS are pleased to offer this TWO DOUBLE BEDROOM MAISONETTE with lounge/diner, double glazing, gas central heating, REAR GARDEN, GARAGE.....900+ YEAR LEASE.....CALL NOW TO VIEW.

POINTS OF INTEREST

- *First Floor Maisonette*
- *Two Double Bedrooms*
- *Lounge/Diner*
- *Double Glazed windows*
- *Gas Central Heating*
- *Rear Garden & Garage*
- *900+ Year Lease*



ROOM DESCRIPTIONS

Front Door to

Entrance Hall

Cloaks hanging space

Stairs to First Floor

Landing

Access to loft housing boiler, radiator, double glazed window

Lounge/Diner

16' 4" x 12' 6" (4.98m x 3.81m) Radiator, double glazed window

Kitchen

10' 5" x 9' 9" (3.17m x 2.97m) Single drainer sink unit inset in roll top work surface, range of cupboards and units, space for fridge freezer, plumbing for autowash, fitted oven and hob, extractor, radiator, two double glazed windows

Bedroom 1

14' 4" x 8' 11" (4.37m x 2.72m) Radiator, double glazed window

Bedroom 2

12' 4" x 11' 7" (3.76m x 3.53m) Radiator, double glazed window

Bathroom

Comprising panel enclosed bath with mixer tap and shower attachment, low level wc, wash hand basin, heated towel rail, part tiled walls, double glazed window

Outside

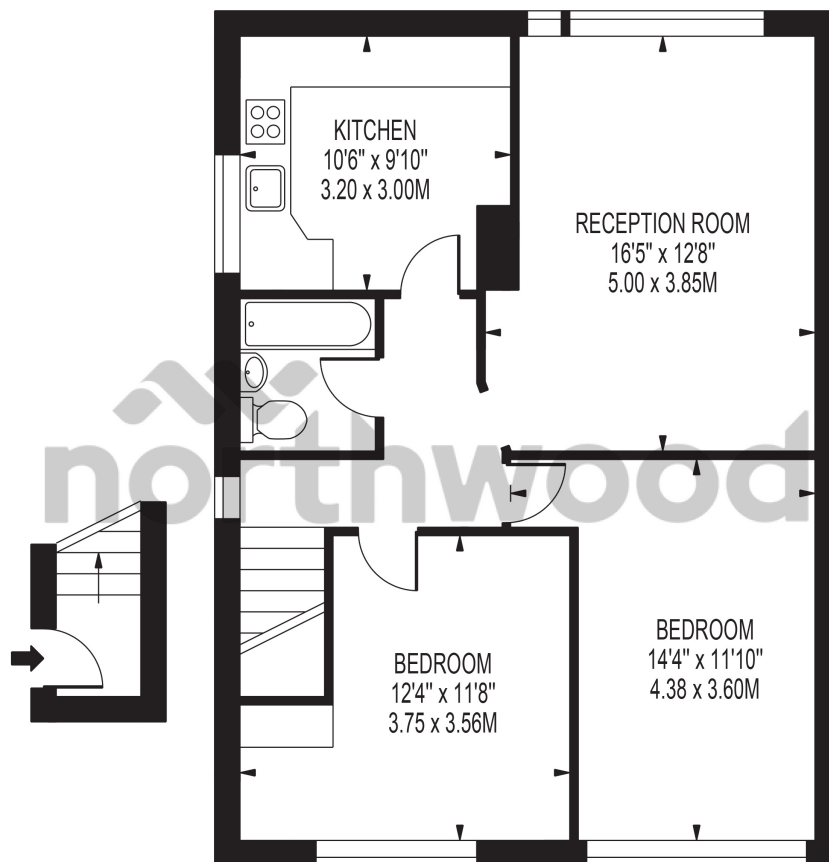
Rear Garden

Artificial grass, garden shed

Garage

JASMIN ROAD

APPROXIMATE GROSS INTERNAL FLOOR AREA: 717 SQ FT - 66.65 SQ M



FOR ILLUSTRATION PURPOSES ONLY

THIS FLOOR PLAN SHOULD BE USED AS A GENERAL OUTLINE FOR GUIDANCE ONLY AND DOES NOT CONSTITUTE IN WHOLE OR IN PART AN OFFER OR CONTRACT. ANY INTENDING PURCHASER OR LESSEE SHOULD SATISFY THEMSELVES BY INSPECTION, SEARCHES, ENQUIRIES AND FULL SURVEY AS TO THE CORRECTNESS OF EACH STATEMENT. ANY AREAS, MEASUREMENTS OR DISTANCES QUOTED ARE APPROXIMATE AND SHOULD NOT BE USED TO VALUE A PROPERTY OR BE THE BASIS OF ANY SALE OR LET.