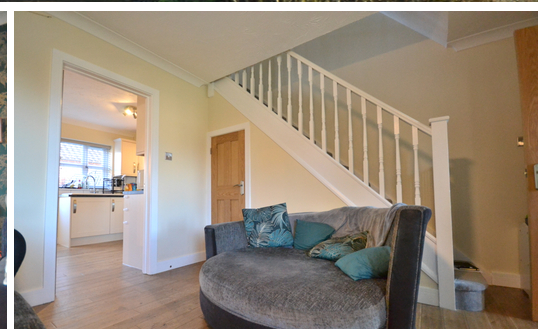




NEWSON & BUCK  
ESTATE AGENTS



## Back Road, Pentney, King's Lynn, Norfolk

£239,995

Newson & Buck are please to present to you this three bedroom family home, situated in the rural village of Pentney. The property comprises of an entrance porch, lounge, kitchen diner, three bedrooms and a family bathroom. To the rear of the property there is an enclosed rear garden and access to a garage. Pentney is located within a 15 minute drive of King's Lynn which in itself and main line rail links to both Cambridge and London. Viewing is highly recommended for this property so please call the office to arrange your appointment with a member of our sales team.



**Entrance Porch**

Oak wood flooring, one radiator, one double glazed window.

**Lounge**

5.2m x 3.8m (17' 1" x 12' 6") Oak wood flooring, one radiator, one double glazed window, under stairs cupboard.

**Kitchen Diner**

5.2m x 3.1m (17' 1" x 10' 2") Oak wood flooring, two double glazed windows, one radiator, fitted kitchen units, sink drainer, oven with induction hob and over head extractor, space for fridge freezer.

**Bedroom One**

3.8m x 2.9m (12' 6" x 9' 6") Fitted carpet, one radiator, one double glazed window.

**Bedroom Two**

Fitted carpet, one radiator, one double glazed window.

**Bedroom Three**

2.6m x 2.4m (8' 6" x 7' 10") Fitted carpet, one radiator, one double glazed window.

**Bathroom**

2.0m x 2.1m (6' 7" x 6' 11") Laminate flooring, bathtub, separate freestanding shower, integrated w/c and sink, one towel radiator, one double glazed window.

**Rear Garden**

Enclosed rear garden with access to rear of the garage.

**Garage**

Up and over front door, lighting, electrics and fitted units with plumbing.

EPC - C

Council Tax Band B

