



hastings
INTERNATIONAL



4 Sanctuary Street

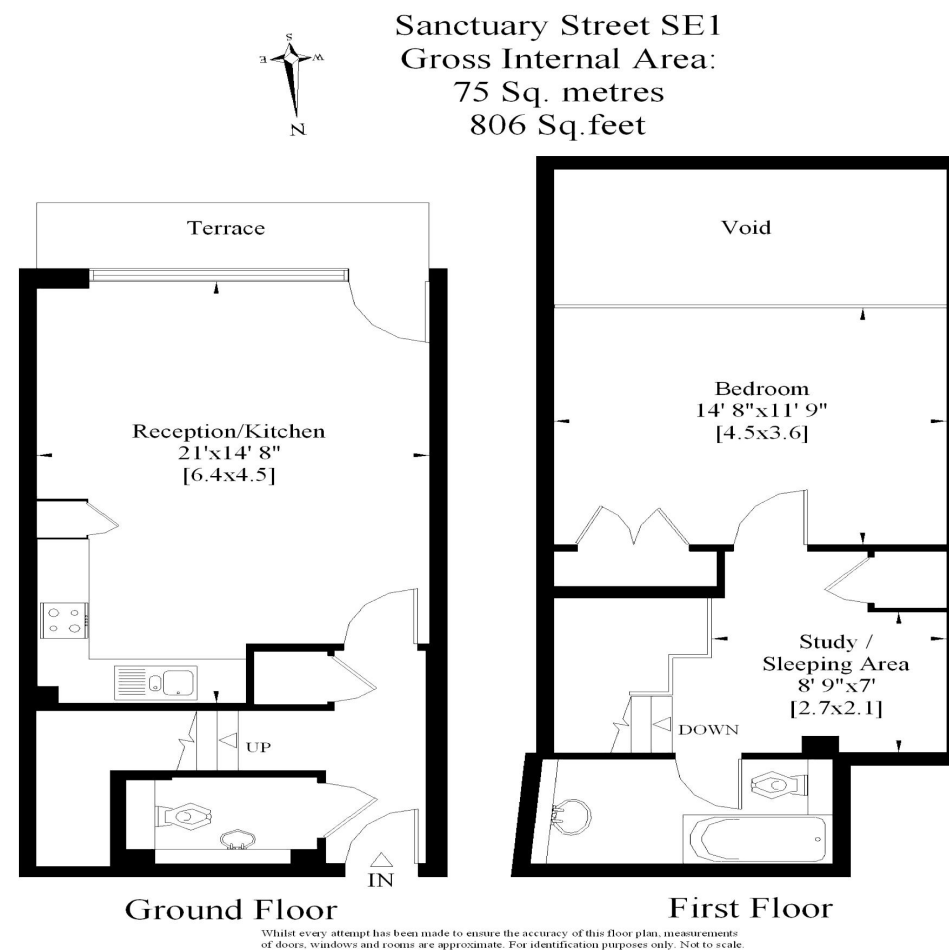
£450,000

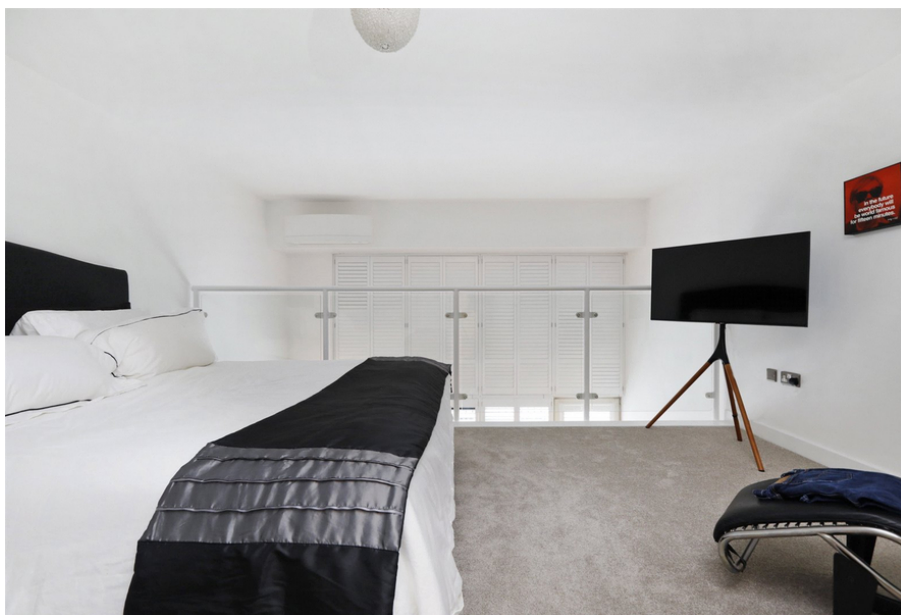
4 Sanctuary Street, London SE1 1EA

A beautifully presented 806 sq ft duplex apartment with stylish, high specification interior and private terrace situated within a sought after modern development moments from London Bridge, Borough Market and Bankside. Secure allocated parking and furniture available under separate negotiation.

This stunning duplex apartment comprises entrance hall with storage cupboard and cloakroom/WC, impressive double height reception room with tiled flooring, double height windows providing lots of natural light, door to private terrace area, stylish open plan fitted kitchen with integrated appliances and stone work tops, stairs lead to study/guest sleeping area with fitted storage cupboard, double mezzanine bedroom with fitted wardrobes and contemporary shower room/WC. The property has the benefit of lots of natural light, under floor heating, air conditioning and is considered ideal for convenient access to London Bridge, Borough Market, Borough High Street and Bankside. Furniture and secure allocated parking available under separate negotiation.

- Sanctuary Street SE1
- Contemporary Modern Design
- One Bedroom
- Private Terrace
- 806 Sq Ft
- Flexible Accommodation
- Study Area
- Excellent Location







Energy Efficiency Rating		
	Current	Potential
Very energy efficient - lower running costs		
(92+) A		
(81-91) B	82	82
(69-80) C		
(55-68) D		
(39-54) E		
(21-38) F		
(1-20) G		
Not energy efficient - higher running costs		
England, Scotland & Wales	EU Directive 2002/91/EC	