

FOR SALE

Letchworth Road, Stanmore, Greater London HA7

*** SIMPLY STUNNING ***

Mischa & Co are proud to offer this ground floor 1 double bedroom apartment within the sought-after Stanmore Place development, which offers stylish and contemporary living with its 24 hour concierge service, resident's only gym and stunning landscaped gardens with water features.

The property briefly comprises of a large open-plan kitchen/reception room, a master bedroom, a family bathroom, plenty of storage, allocated secure parking space and 113 year lease. Situated within close range of shops and Canons Park Underground Station (Jubilee line).

Currently being sold chain free.

Council Tax Band D (Harrow) & EPC rating C (79).

Energy Efficiency Rating		Current	Potential
100%	A		
(91-100)	B		
(81-90)	C	79	79
(71-80)	D		
(61-70)	E		
(51-60)	F		
(41-50)	G		

For energy efficient - lower running costs

For energy efficient - higher running costs

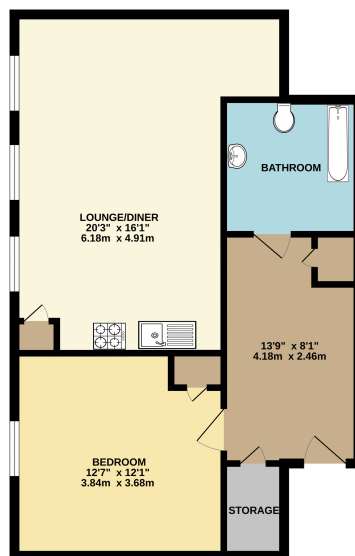
England, Scotland & Wales

£310,000 Leasehold

4 North Parade, Mollison Way, Edgware, HA8 5QH
E: info@mischaandco.com T: 0208 951 5000

Floorplan

GROUND FLOOR
644 sq.ft. (59.8 sq.m.) approx.



TOTAL FLOOR AREA: 644 sq.ft. (59.8 sq.m.) approx.
Whilst every attempt has been made to ensure the accuracy of the description contained here, measurements of areas, volumes, rooms and any other facts are approximate and not responsible to whom for any error, omission or misstatement. This plan is for illustrative purposes only and should be used as such by any prospective purchaser. The services, appliances and equipment shown hereon have not been tested and no guarantee as to their operability or efficiency can be given.
Made with Metshape ©2025

NB: Please note that all fittings, kitchen appliances and heating systems have not been tested by Mishca & Co Sales & Lettings. Whilst we endeavour to make our sales details accurate and reliable. Room sizes should not be relied upon for carpets and furnishings. If there is any point, which is of particular important to you, please contact our office and we will be pleased to verify any information for you. Do so particularly if contemplating travelling some distance to view this property.

