



Flat 9 Prospect House Bethel Lane, FARNHAM, Surrey. GU9 0QB.

£1,100 pcm

- First floor apartment
- Open plan contemporary living
- Bathroom with rain head shower
- Double bedroom
- Allocated parking 1 car
- Stunning 1st floor apartment
- Kitchen with fitted appliances
- Spacious living area
- Fitted blinds
- Available now

Energy Efficiency Rating		Current	Potential
Very energy efficient - lower running costs			
(92+)	A		
(81-91)	B	81	82
(69-80)	C		
(55-68)	D		
(39-54)	E		
(21-38)	F		
(1-20)	G		
Not energy efficient - higher running costs			
England, Scotland & Wales		EU Directive 2002/91/EC	

## Description

Situated in a residential lane on the North side of Farnham, this brand new first floor apartment offers spacious, contemporary, open plan living. Features include a fitted kitchen with integrated appliances, bathroom with rainhead shower, large living space with triple aspect, double bedroom, oak internal doors, satellite television connection and usb charging points, electric central heating to radiators and double glazed windows with fitted blinds. As well as a range of local amenities, Farnham's elegant Georgian town centre and mainline station with regular service to Waterloo are within 2 1/2 miles.

## Directions

SAT NAV - GU9 0QB

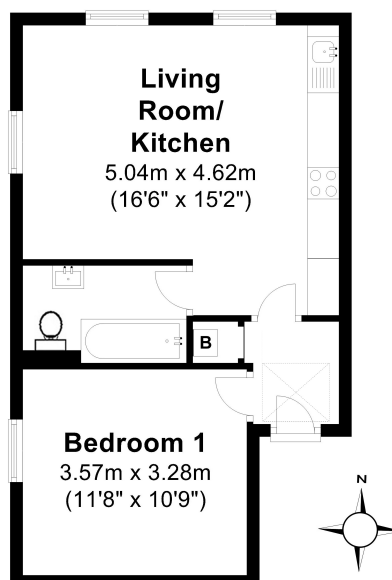
## Tenants Fees

Tenant is responsible for paying utility bills and council tax. • Holding Deposit (Goes towards 1st month's rent) - 1 weeks Rent. • Security Deposit (payable once tenancy agreement is signed) – 5 weeks rent. • Rent payable in advance (payable once tenancy agreement is signed) - 1 month (minus holding deposit). Lets Help Property Management Services Ltd handle all client money on behalf of Keats Fearn and are a member of the Propertymark Client Money Protection Scheme No C0124095. Tenant's Notes - Proof of a professional clean on exit will be required including the appliances.

## Local Authority

Waverley  
Band B

## Flat 9, Prospect House, Bethel Lane, Farnham, GU9 0QB



Total area: approx. 40.6 sq. metres (436.7 sq. feet)

This plan is for layout guidance only.  
Measurements are for general guidance  
only and must not be relied upon

For clarification we wish to inform prospective purchasers/tenants that we have prepared these sales particulars as a general guide. We have not carried out a detailed survey or tested the services, appliances and specific fittings.