



Oak Street,
Birches Head



OneAgency

01782 970222

hello@oneagencygroup.co.uk



Offers in Region of £120,000

Detached house situated in the popular location of Birches Head, convenient for access into Hanley City Centre. The property requires updating and is offered with no chain involvement.





Ground Floor

Hallway

A door to the front, double glazed window, radiator and stairs to the first floor.

Sitting Room

3.34m x 3.41m (10' 11" x 11' 2") A double glazed window to the front and radiator.

Living Room

3.34m x 3.40m (10' 11" x 11' 2") A double glazed window to the rear and radiator.

Kitchen

3.01m x 1.88m (9' 11" x 6' 2") Wall and base units, stainless steel sink basin, double glazed window, radiator, door to the side and storage space.

First Floor

Landing

Access to loft and double glazed window to the side.

Bedroom One

3.36m x 3.41m (11' 0" x 11' 2") A double glazed window to the front and radiator.

Bedroom Two

3.33m x 3.42m (10' 11" x 11' 3") A double glazed window to the rear, store with worcester boiler and radiator.

Bedroom Three

2.00m x 1.88m (6' 7" x 6' 2") A double glazed window to the front.

Wet Room

2.25m x 1.85m (7' 5" x 6' 1") An electric shower, hand wash basin, low level W/C, double glazed window and radiator.

External

A yard to the rear.

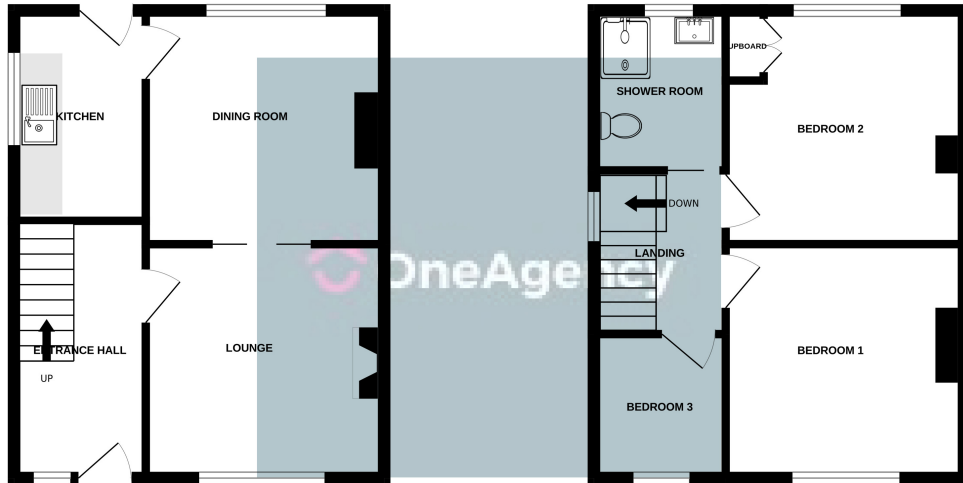
Agents Notes

Stoke-on-Trent Council Tax Band B

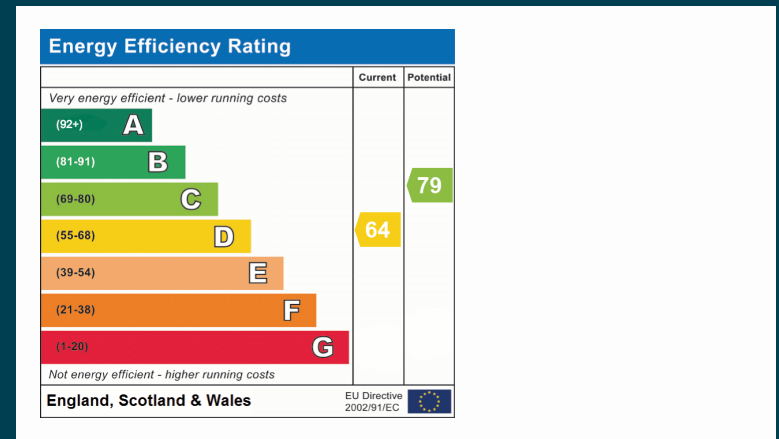


GROUND FLOOR

1ST FLOOR



Whilst every attempt has been made to ensure the accuracy of the floorplan contained here, measurements of doors, windows, rooms and any other items are approximate and no responsibility is taken for any error, omission or mis-statement. This plan is for illustrative purposes only and should not be used as such by any prospective purchaser. The services, systems and appliances shown have not been tested and no guarantee as to their operability or efficiency can be given.
Made with Metropix ©2024



OneAgency, 9 & 10 Ridge House Drive, Festival Park, Stoke-on-Trent, ST1 5SJ

01782 970222

hello@oneagencygroup.co.uk

Every attempt has been made to ensure accuracy, however, all measurements are approximate and for illustrative purposes only. **Not to scale.**

In accordance with The Consumer Protection from Unfair Trading Regulations 2008 the following particulars have been prepared in good faith and they are not intended to constitute part of an offer or contract. We have not carried out a structural survey and the services, appliances and specific fittings have not been tested. All photographs, measurements, floor plans and distances referred to are given as a guide only and should not be relied upon for the purchase of carpets or any other fixtures and fittings. Lease details, service charges and ground rent (where applicable) are given as a guide only and should be checked and confirmed by your Solicitor prior to exchange of contracts.