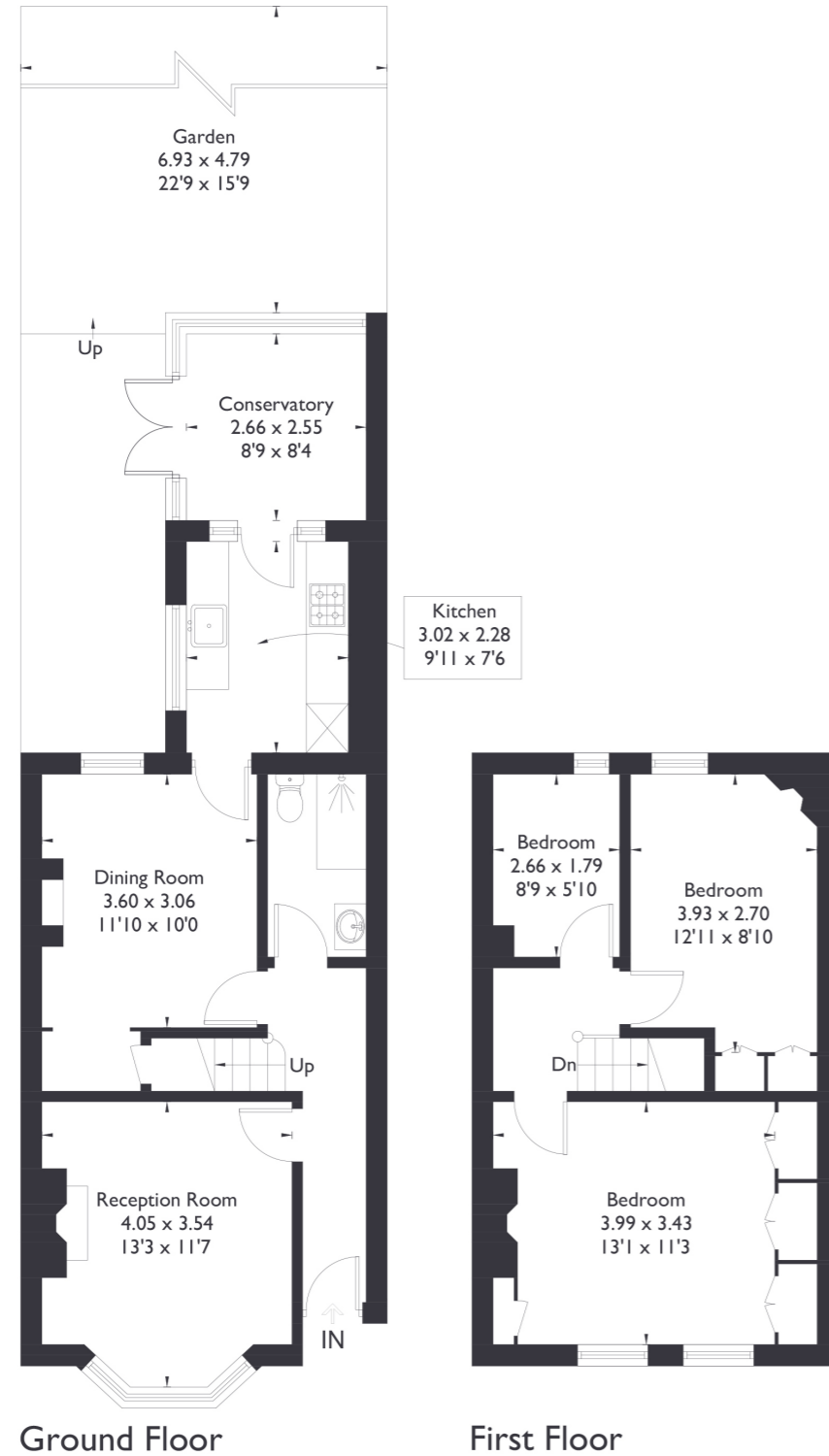


Hessel Road, W13

Approximate Floor Area = 91.1 sq m / 981 sq ft



3 BEDROOM HOUSE

Hessel Road, W13

£835,000

Welcome to this fantastic three bedroom, one bathroom property located in the heart of Northfields. This delightful home boasts bright and airy rooms throughout, ensuring a warm and inviting atmosphere. The spacious bedrooms offer ample storage options and plenty of room for all your furniture needs.

Lovingly refurbished and well presented, this property showcases lots of potential.

FEATURES

- Chain Free
- Three Bedrooms
- One Bathroom
- Potential To Extend (STPP)
- Fielding Primary School
- Northfields Station
- EPC Rating C



3 BEDROOM HOUSE

Hessel Road, W13

Featuring a new kitchen and original features, this property seamlessly blends modern convenience with classic charm.

With the potential to extend, subject to planning permission, this house offers a fantastic opportunity for future growth. Situated in a prime location, you'll enjoy easy access to Northfields' amenities, Northfields station, and the highly sought-after Fielding Primary School catchment area. EPC Rating C.

