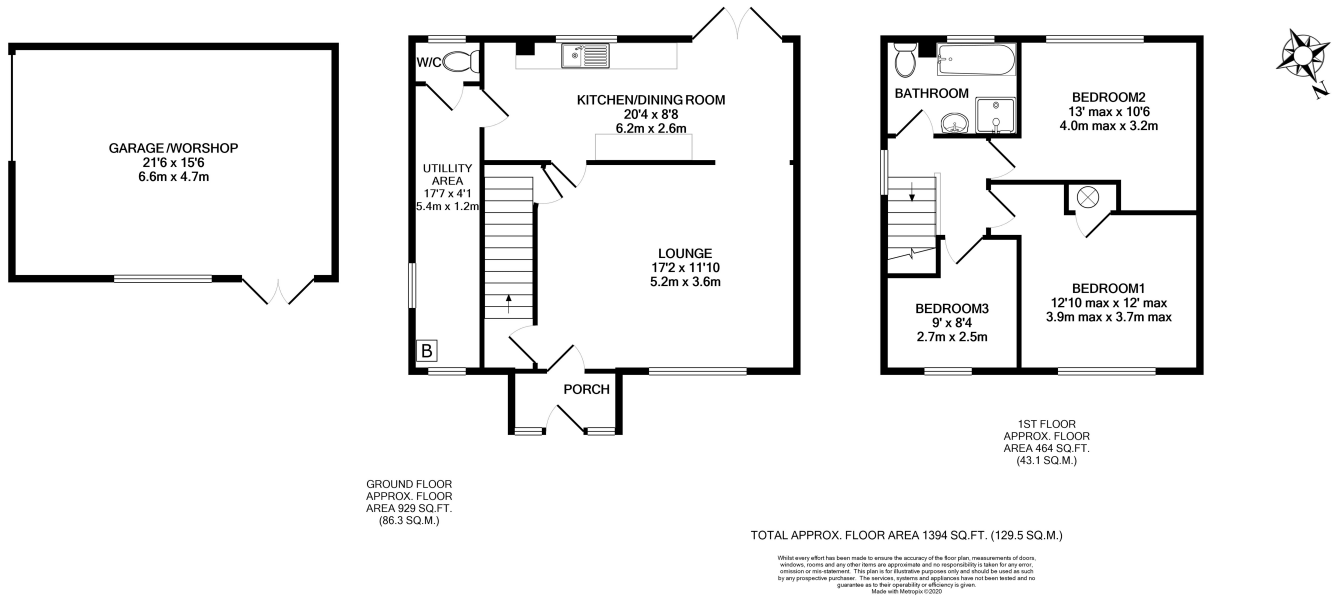


## Bravington Close, Shepperton, TW17 0JG

**Guide Price £375,000**



- Modern Kitchen
- Potential To Extend (STPP)
- South Facing Rear Garden
- Three Bedrooms
- Within 1 Mile of High Street
- Modern Bathroom
- Detached Double Garage To Rear
- Double Glazed



We have not tested the services or domestic appliances so we cannot verify that they are in working order. The buyer is advised to obtain verification from their solicitor or surveyor. These particulars form no part of any offer or contract and their accuracy cannot be guaranteed.