

FOR
SALE



PROPERTY SUMMARY

We are delighted to present to the market this beautifully converted, stone-built semi-detached barn, located in the highly desirable area of Eglwys Nunnydd. This unique home has been sympathetically refurbished to an superb standard throughout, combining charming character features with high-quality modern finishes. The property would make a wonderful family home for those seeking a balance of rural tranquillity and convenient access to local amenities. There are three generous living areas, all with an abundance of natural light from the bi-fold doors accessing all sides of the property. This really is a house you need to view!

Set within the picturesque semi-rural setting of Eglwys Nunnydd, the property benefits from close proximity to Margam Country Park, renowned for its historic castle, gardens and walking trails. Despite the peaceful surroundings, the home is only a short drive from Port Talbot town centre, offering a wide range of shops, schools, and leisure facilities. Excellent transport links, including the M4 motorway and Port Talbot Parkway railway station, provide easy access to the mainline rail network, making this an ideal location for commuters.

The property is approached via gated access with off-road parking for multiple vehicles. To the rear is a private enclosed garden, laid mainly to lawn with a patio area perfect for outdoor dining and relaxation. The exterior retains its original stone character, blending beautifully with the immediate surroundings.

POINTS OF INTEREST

- Stone built semi detached barn conversion
- Spacious kitchen/family room
- NO ONWARD CHAIN
- Generous living space with 3 separate areas
- Four double bedrooms/ Two ensuite's
- Enclosed rear garden with garden lodge
- Detached double garage



ROOM DESCRIPTIONS

Entrance

Via solid wood front door into hallway finished with two hardwood double glazed windows overlooking the front with fitted Roman blinds, emulsioned ceiling, inset spot lights, two light fittings, original beam, emulsioned walls, slate tiled flooring with under floor heating. Stairs to first floor. Boiler cupboard with control panel for under floor heating. Doors leading off.

Lounge

6.66m x 6.0m (21' 10" x 19' 8")

Emulsioned ceiling with inset spot lights, two pendant light fittings, emulsioned walls, PVCu double glazed bi-folding doors overlooking the front of the property with curtain pole, PVCu window overlooking the side of the property with fitted Roman blind and LVT flooring with under floor heating. Floor to ceiling brick built inglenook fireplace with slate hearth, wooden mantel and freestanding electric log feature fire.

Reception 2

5.74m x 4.18m (18' 10" x 13' 9")

Emulsioned ceiling, two pendant light fittings, emulsioned walls with feature papered wall, wall mounted air conditioning unit, PVCu double glazed window overlooking the side of the property with fitted Roman blind, PVCu double glazed bi-folding doors overlooking the rear of the property with inset pull down blinds and LVT flooring with under floor heating.

Kitchen/Family Room

8.36m x 5.51m (27' 5" x 18' 1")

To the kitchen area:

Emulsioned ceiling, inset spot lights, pendant light fitting over the island, emulsioned walls, PVCu double glazed windows overlooking the front and rear with fitted roller blinds, emulsioned walls with mirrored splash back, continuation of the flagstone tiled flooring. A range of bespoke wall and base units in ivory with solid granite work surfaces. Double inset Belfast sink with chrome mixer tap and boil tap. Integrated appliances include dishwasher and under counter fridge. American style fridge/freezer to remain. Falcon Range cooker with five ring gas hob and double oven to remain set within floor to ceiling feature brick chimney central to the room.

Family living area:

Emulsioned ceiling with inset spot lights, corner pendant feature fitting, emulsioned walls and a continuation of the flagstone tiled flooring with under floor heating. Feature brick fireplace with inset electric fire. PVCu bi-folding doors to the front and rear of the property with fitted

Downstairs Shower Room

2.77m x 1.56m (9' 1" x 5' 1")

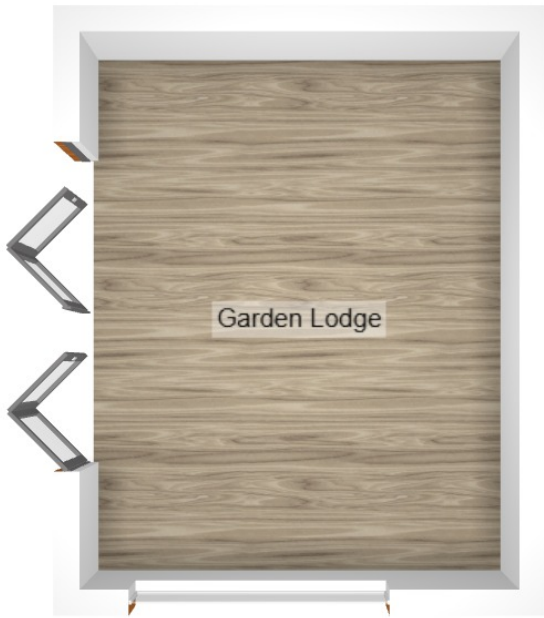
Emulsioned ceiling with inset spot lights, emulsioned walls, ceramic tiles to splash back area, PVCu frosted double glazed window overlooking the rear of the property with fitted Roman blind and a continuation of the flagstone flooring with under floor heating. Three piece suite in white comprising WC, wash hand bowl with chrome mixer tap set on wooden painted vanity unit and double width shower with wall mounted chrome rainfall shower head and glass doors.

First floor landing

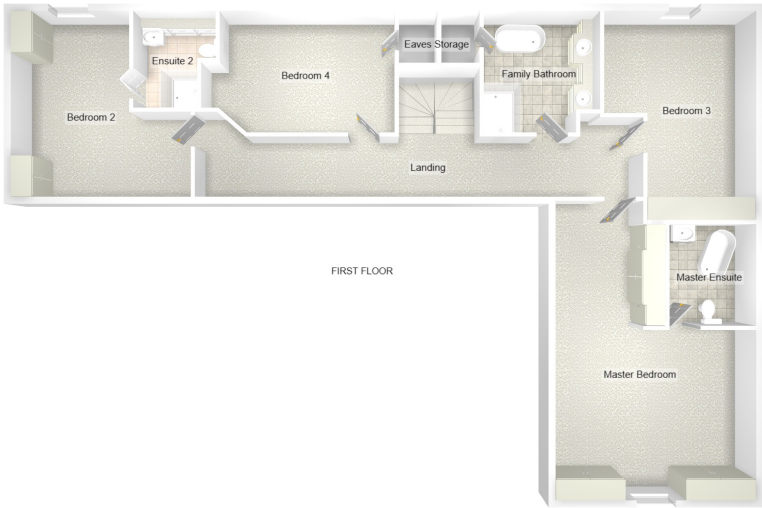
Via stairs with fitted carpet. Emulsioned sloped ceiling with four Velux windows allowing plenty of natural light all fitted with blinds, inset spot lights, emulsioned walls, two radiators and fitted carpet. Floor to ceiling feature mirror on the stairwell. Doors leading off.

Master Bedroom





GARDEN LODGE



FIRST FLOOR

