

Butlers Close, Broomfield, Chelmsford, Essex CM1 7BE



Energy Efficiency Rating C



£2,400 Per Month

Butlers Close, Broomfield, Chelmsford, Essex CM1 7BE



Energy Efficiency Rating		Current	Potential
Very energy efficient - lower running costs			
(82-100)	<b>A</b>		81
(61-81)	<b>B</b>		
(49-60)	<b>C</b>	73	
(35-48)	<b>D</b>		
(22-34)	<b>E</b>		
(9-21)	<b>F</b>		
(1-8)	<b>G</b>		
Not energy efficient - higher running costs			
England, Scotland & Wales		EU Directive 2002/91/EC	

**\*ONLINE ENQUIRIES ONLY\*** Bond Residential are delighted to offer for let, this four bedroom house available from early October.

The property features an entrance hallway, lounge, separate study, dining room, leading through to a sitting room. Kitchen/breakfast room complete with appliances, utility room and ground floor cloakroom.

Four bedrooms with en-suite to principal bedroom, main bathroom complete with bath and separate shower.

Externally, the property offers a double garage and driveway for at least three vehicles, rear enclosed garden and patio. Gas central heating and unfurnished.

Council Tax Band F. Deposit £2770

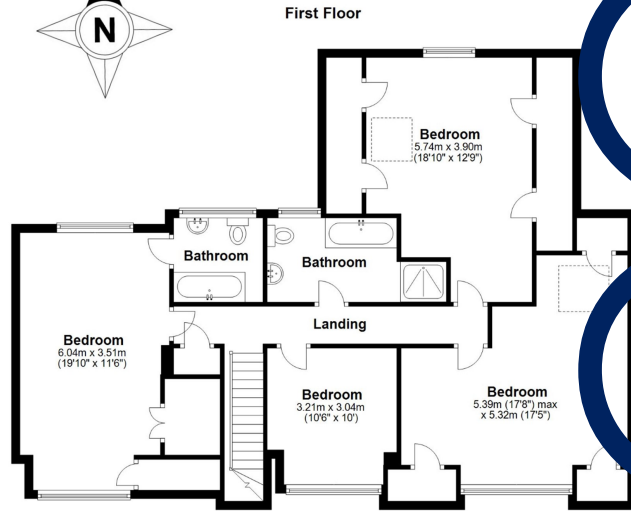
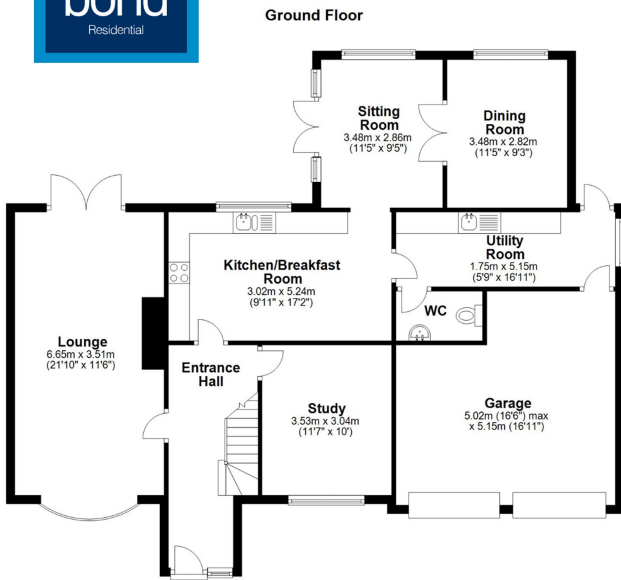
- Available Early October
- Four Bedroom
- Gas Central Heating
- Unfurnished
- Kitchen Appliances Provided
- En-suite to Principal Bedroom
- Double Garage & Driveway



**01245 500599**

**[www.bondresidential.co.uk](http://www.bondresidential.co.uk)**

**f/bondresidential**  **@bondresidential**



APPROX INTERNAL FLOOR AREA 206 SQ M (2210 SQ FT)  
PLUS OUTBUILDINGS 24 SQ M (260 SQ FT)  
TOTAL 230 SQ M (2470 SQ FT)  
This floorplan is for illustrative purposes only and is **NOT TO SCALE**  
All measurements are approximate **NOT** to be used for valuation purposes  
Copyright Bond Residential 2023

# FLOOR PLAN



01245 500599  
[www.bondresidential.co.uk](http://www.bondresidential.co.uk)  
43 New London Road, Chelmsford, CM2 0ND

