



Hay Green, Danbury, CM3 4NU

Council Tax Band H (Chelmsford City Council)

 4  3  2

£950,000 Freehold

Versatile four-bedroom home in the heart of Danbury Village

Nestled in a highly sought-after cul-de-sac in the heart of Danbury village, this much-improved four-bedroom detached chalet-style home offers extended accommodation with a high degree of versatility. Perfect for families or those seeking a spacious retreat, the property features two bedrooms and a bathroom on each floor, ensuring ample space and privacy.

Ground floor space

The ground floor welcomes you with a large inviting entrance hall and a modern cloakroom. The spacious living room overlooks the beautifully landscaped rear garden, providing a serene backdrop for relaxation with a log burner to provide a focal point and cozy environment in the winter. The ground floor playroom could be utilised as home office space and adjoins the modern kitchen/breakfast room which features a German kitchen with ivory gloss cabinet doors and integrated appliances, including an induction hob, electric oven, dishwasher, and fridge/freezer. The separate dining room features a glazed roof lantern with sliding doors opening onto the rear garden and connects to the utility room, study/bedroom 4 and a large UPVC conservatory featuring bi-folding doors that also overlook the rear patio and gardens beyond. The ground floor space is completed by the principal bedroom with fitted wardrobes and a luxurious en-suite bathroom.

First Floor Comfort

The first floor offers two generously sized double bedrooms and a bathroom with a four-piece white suite.

The property also boasts UPVC double glazing and sunflow electric radiators. Located on the roof are over 20 solar panels to help with energy efficiency and costs.

Outdoor Bliss

Set on an overall plot extending to around a quarter of an acre, the stunning rear gardens enjoy a south-easterly aspect and measure approximately 80' x 75' (24.38m x 22.86m). They provide a tranquil outdoor space which enjoys plenty of sunlight and also features a large summer house. A mature oak tree set within the rear garden is protected by a TPO.

The front of the property features an in/out driveway with extensive parking, an EV charging point and detached garage.

Prime Location

Located within a few minutes' walk of Danbury village centre, the property is close to popular schools such as Elm Green, Heathcote, St. Johns and Danbury Park. Local amenities include a Co-op & Tesco convenience stores, public houses, and a parish church. For commuters, Hatfield Peverel and Chelmsford's mainline stations are approximately 5 miles away, offering services to London Liverpool Street, Chelmsford city centre, Maldon town centre, and South Woodham Ferrers are also within easy reach.

This charming chalet-style home in Danbury village is a rare find, offering versatile living spaces, modern amenities, and a prime location.

Don't miss the opportunity to make this your dream home.

- Individual three/four bedroom detached chalet style home
- Modern fitted kitchen/breakfast room with integrated appliances
- Master Bedroom with en-suite bathroom
- Quarter of an acre plot with south east facing rear aspect
- Reduced energy costs from over 20 solar panels
- Highly sought after location within walking distance of village centre
- 24ft living room with separate dining room, playroom and office
- Stunning UPVC Conservatory with bi-fold doors to garden
- Two bathrooms and ground floor cloakroom
- Electric heating and double glazing
- Detached garage, parking and EV charging point

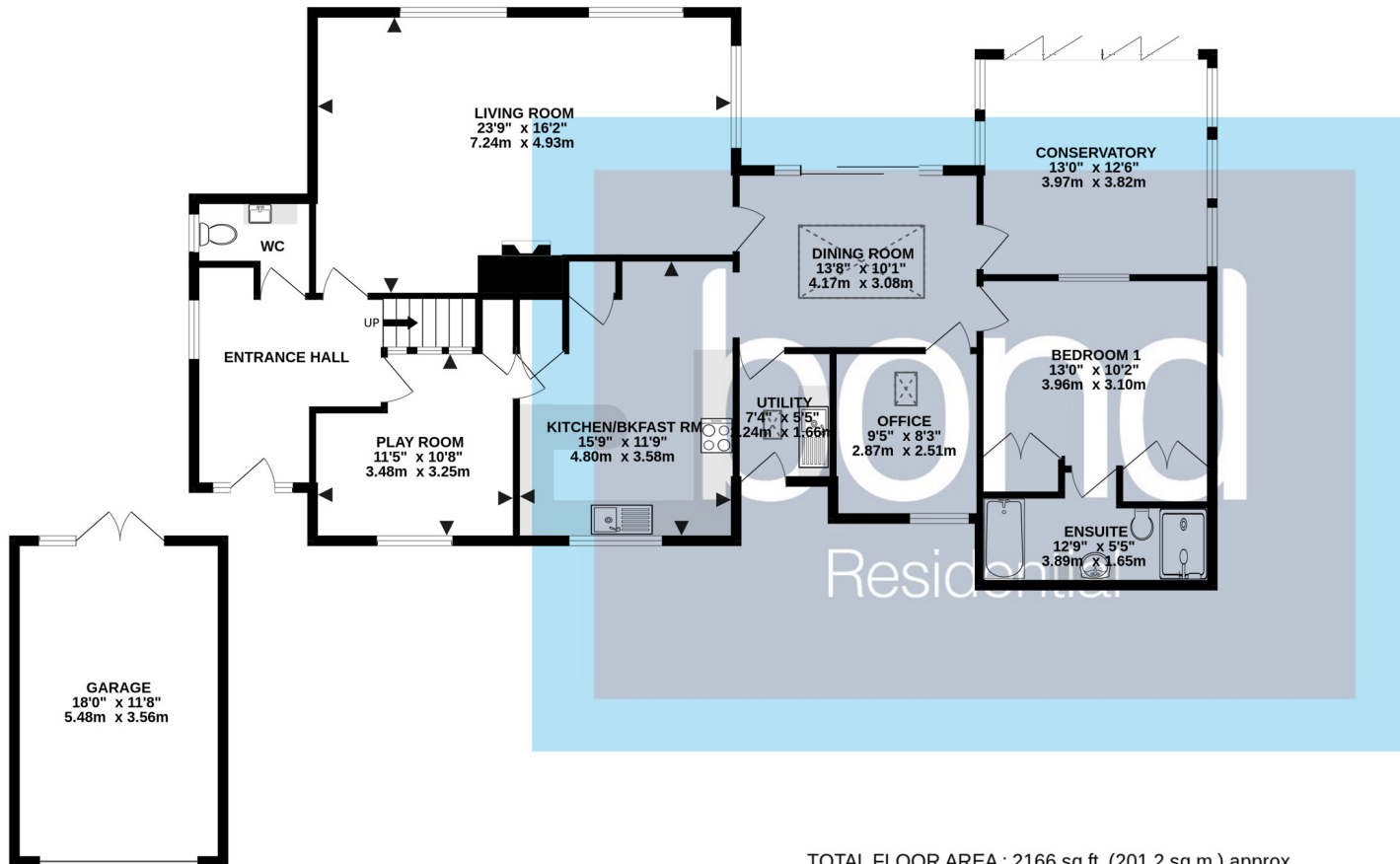




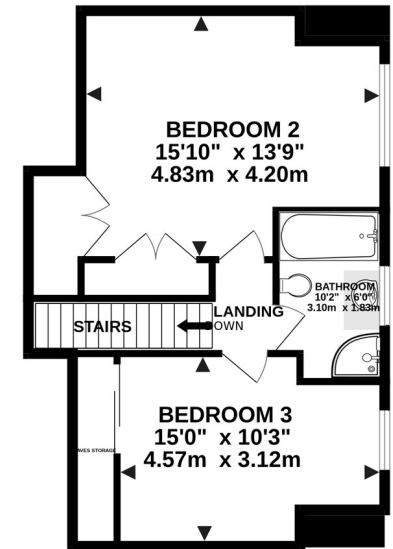




GROUND FLOOR
1651 sq.ft. (153.4 sq.m.) approx.



1ST FLOOR
515 sq.ft. (47.8 sq.m.) approx.



TOTAL FLOOR AREA : 2166 sq.ft. (201.2 sq.m.) approx.

Whilst every attempt has been made to ensure the accuracy of the floorplan contained here, measurements of doors, windows, rooms and any other items are approximate and no responsibility is taken for any error, omission or mis-statement. This plan is for illustrative purposes only and should be used as such by any prospective purchaser. The services, systems and appliances shown have not been tested and no guarantee as to their operability or efficiency can be given.
Made with Metropix ©2024



10, Maldon Road,
Danbury, Essex, CM3 4QQ
Telephone: 01245 222856
Website: www.bondresidential.co.uk

Consumer Protection from Unfair Trading Regulations 2008 and the Business Protection from Misleading Marketing Regulations 2008. Bond Residential have made every effort to ensure that consumers and/or businesses are treated fairly and provided with accurate material information as required by law. We have not tested any apparatus, equipment, fixture, fitting or any services and as such are unable to verify they are in working order, fit for their purpose, or within the ownership of the seller or landlord. Neither have we been able to check the legal documentation to verify the legal status of the property. We therefore advise potential buyers or tenants to verify these matters with their own solicitors or other advisers.

