



4 Chestnut Walk, Bexhill-on-Sea, East Sussex,  
TN39 4PL

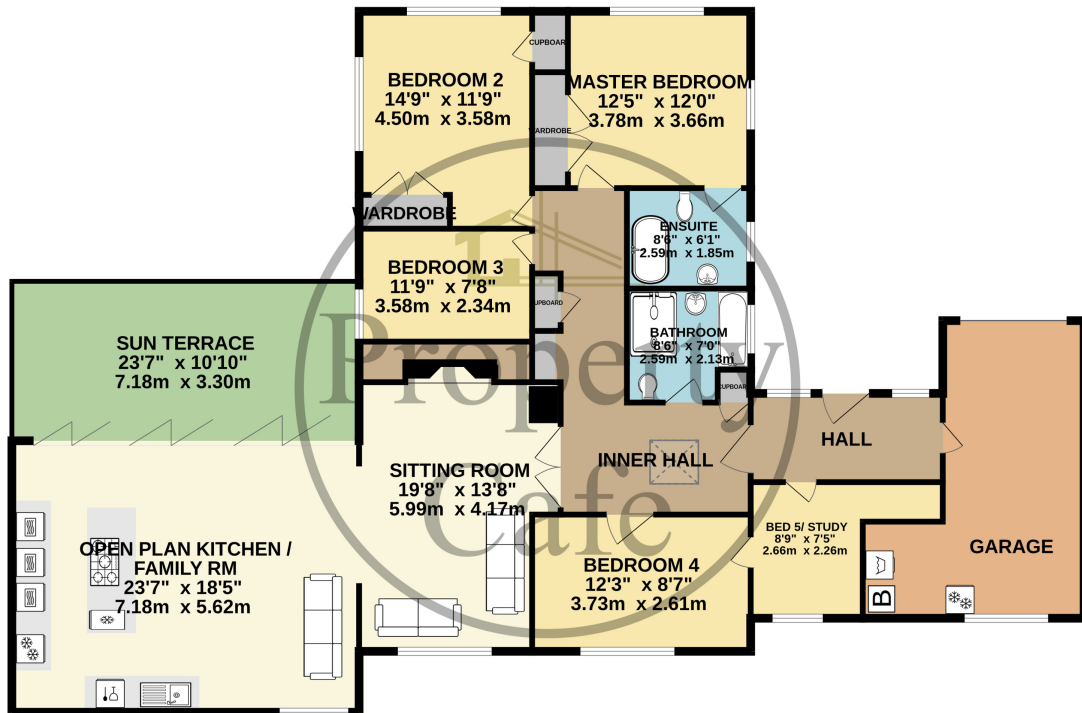
£699,950



- Stunning Five Bedroom Bungalow
- Beautifully Presented Throughout
- Immaculate Inner Hall With Vaulted Ceiling
- Extended Open Plan Kitchen/Family Room
- Bi-Fold Doors Onto Decked Sun Terrace
- Bespoke Kitchen With Quality Built In Appliances
- Versatile Accommodation Offering Five Beds
- Open Plan Lounge Area With Built In Media Wall
- Stunning Decor & Karndean Flooring Throughout
- Island Unit With Built In Appliances Inc A Concealed Extractor
- Master Bed With Bespoke En-Suite Bathroom
- Spacious Fully Tiled Family Bathroom
- West Facing Composite Decked Patio Area
- Bi-Fold Doors With Remote Electric Blinds
- Large 20ft Garage With Utility Area
- New Fitted Remote Garage Door
- Ample Off Road Parking (Min x4 Cars)
- Fitted With Security Cameras & Security Lighting
- Various Lighting Themes Throughout The Property
- Quality Fixtures & Fittings Throughout
- Bright & Spacious West Facing Aspects



**GROUND FLOOR**  
**1970 sq.ft. (183.0 sq.m.) approx.**



TOTAL FLOOR AREA : 1970 sq.ft. (183.0 sq.m.) approx.  
 Whilst every attempt has been made to ensure the accuracy of the floorplan contained here, measurements of doors, windows, rooms and any other items are approximate and no responsibility is taken for any error, omission or mis-statement. This plan is for illustrative purposes only and should be used as such by any prospective purchaser. The services, systems and appliances shown have not been tested and no guarantee as to their operability or efficiency can be given.  
 Made with Metropix ©2024

