



Aberdale Gardens, Potters Bar, Hertfordshire, EN6

£679,950

- **FOUR BEDROOM BUNGALOW**
- **MODERN FITTED KITCHEN DINER**
- **GOOD DECORATIVE ORDER**
- **GOOD SCHOOL CATCHMENT AREA**
- **EXTERNAL INSULATION /**
- **KITCHEN - DINER**
- **OFF STREET PARKING X 2**
- **SHORT WALK TO POTTERS BAR MAINLINE STATION**
- **COUNCIL TAX BAND D**

108, High Street, Potters Bar, EN6 5AT

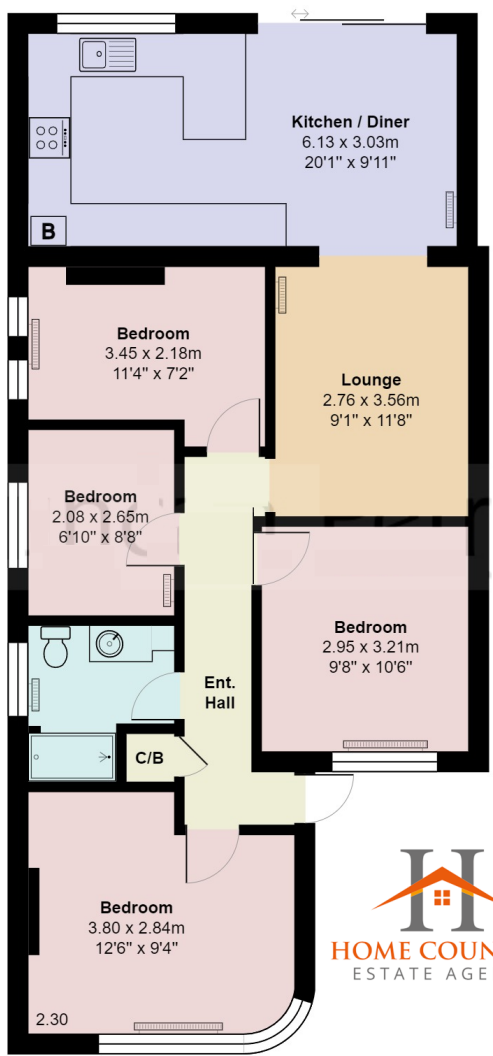
01707 245 555

www.home-counties.com

Aberdale Gardens, Potters Bar, Hertfordshire, . EN6

£679,950 Freehold

This delightful four-bedroom semi-detached bungalow is ideally situated on this quiet turning just moments from Darkes Lane with its array of shops and restaurants and Potters Bar Mainline Station. The property benefits from off street parking, lounge, and kitchen diner to the rear with modern fitted kitchen, four bedrooms and a family bathroom. Externally the property has been insulated and rendered, has off street parking, side access and a private rear garden.



Aberdale Gardens, Hertfordshire EN6

Total Area: 79.2 m² ... 853 ft²

All measurements are approximate and for display purposes only

