



NEWSON & BUCK
ESTATE AGENTS



3 Sandringham Avenue, Docking, King's Lynn, Norfolk PE31 1EJ, £78,750

Newson & Buck are proud to present to you this unique opportunity to purchase this brand new two bedroom terrace house via the shared ownership scheme, located in the desirable North Norfolk village of Docking. The property comprises of an entrance hallway, kitchen, lounge diner, downstairs w/c and two bedrooms with an en-suite to each one. Further benefits include allocated off road parking and an enclosed rear garden. The local shop can be found within a three minute walk with the local primary school within a five minute walk. Viewing for this property is highly recommended so please get in touch to arrange your appointment today!

Share available to purchase is a minimum of 25% - £78,750



Maximum share available up to 75% - (£236,250)

01553 775151



Entrance Hall

Fitted carpet and cupboard space.

Kitchen

3.2m x 2.3m (10' 6" x 7' 7") Vinyl flooring, fitted kitchen units, one double glazed window, oven, induction hob with extractor, stainless steel sink drainer, fridge freezer, washing machine.

Lounge Diner

6.4m x 3.1m (21' 0" x 10' 2") Fitted carpet. one double glazed window, patio doors leading to rear garden area.

W/C

Vinyl flooring, low flush w/c, pedestal sink.

Landing

Fitted carpet, one double glazed window.

Bedroom One

3.2m x 3.4m (10' 6" x 11' 2") Fitted carpet, one double glazed window.

Bedroom Two

3.7m x 2.7m (12' 2" x 8' 10") Fitted carpet, one double glazed window.

En Suite One

Vinyl flooring, one double glazed window, one towel radiator, pedestal sink, bath tub with shower attachment.

En Suite Two

Vinyl flooring, one double glazed window, one towel radiator, pedestal sink, shower.

Rear Garden

Enclosed rear garden with patio area.

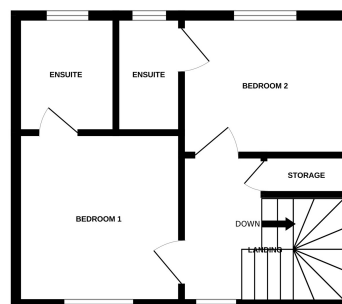
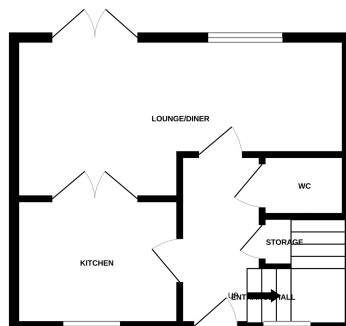
EPC - B

Council Tax Band TBC



GROUND FLOOR

1ST FLOOR



Whilst every attempt has been made to ensure the accuracy of the floorplan contained here, measurements of doors, windows, rooms and any other items are approximate and no responsibility is taken for any error, omission or mis-statement. This plan is for illustrative purposes only and should be used as such by any prospective purchaser. The services, systems and appliances shown have not been tested and no guarantee as to their operability or efficiency can be given.
Made with Metropix ©2024